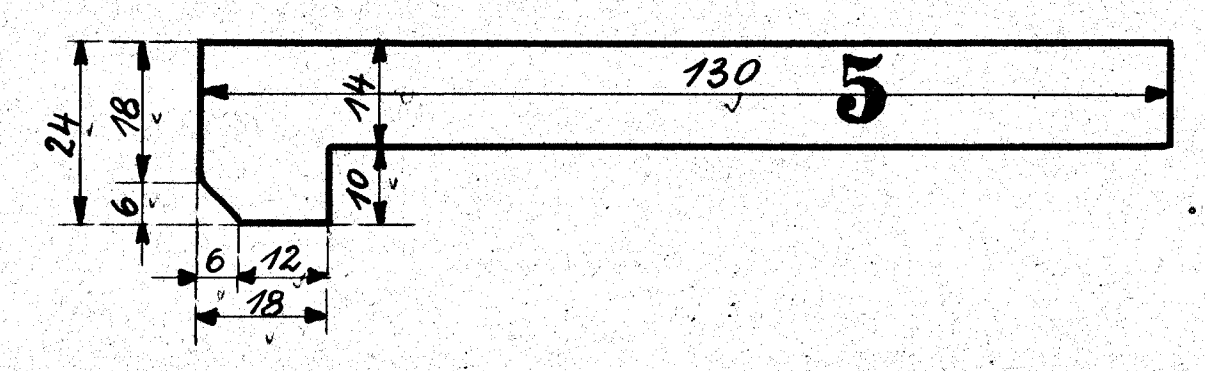
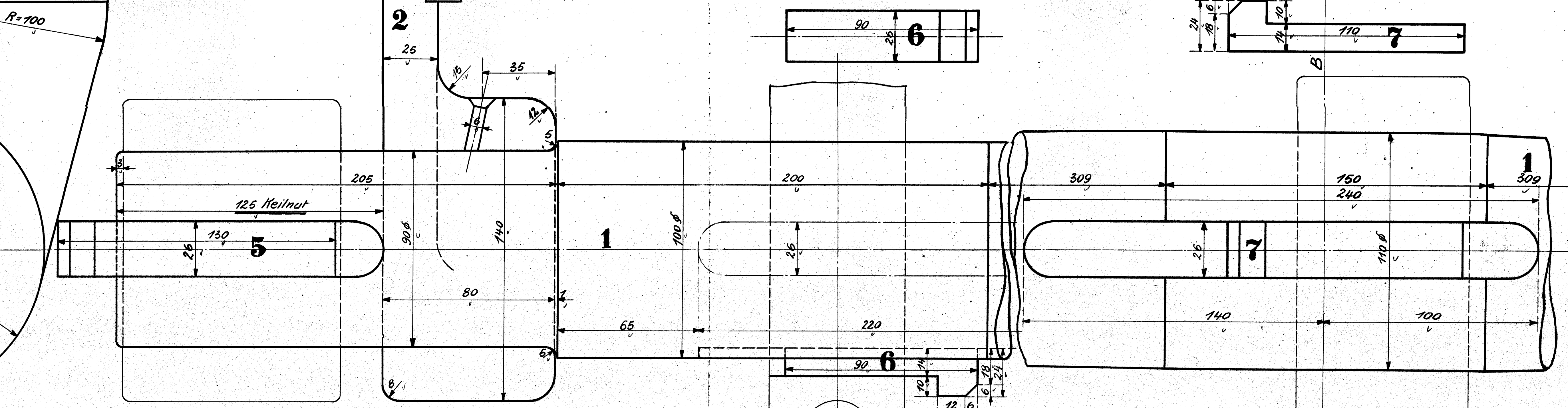
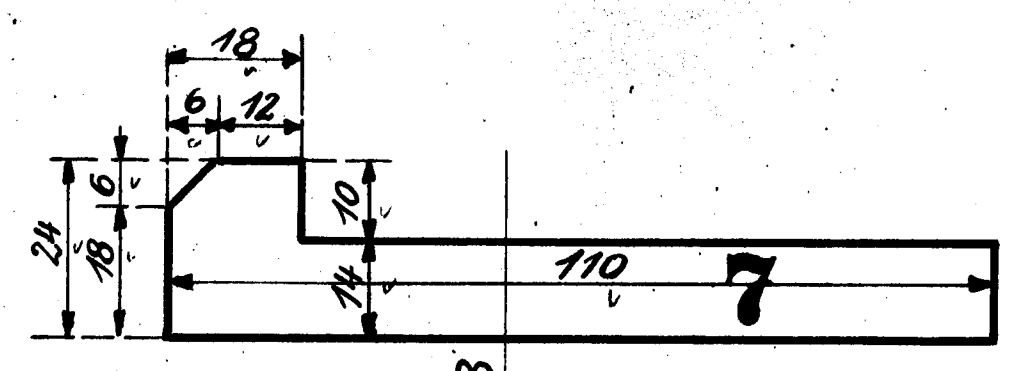
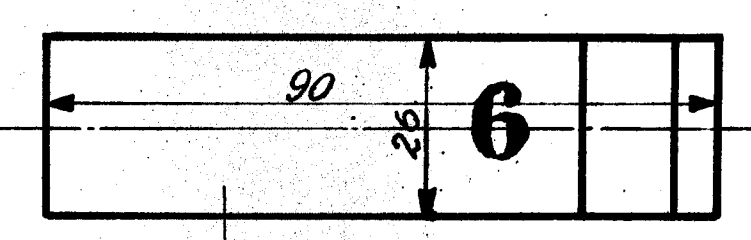
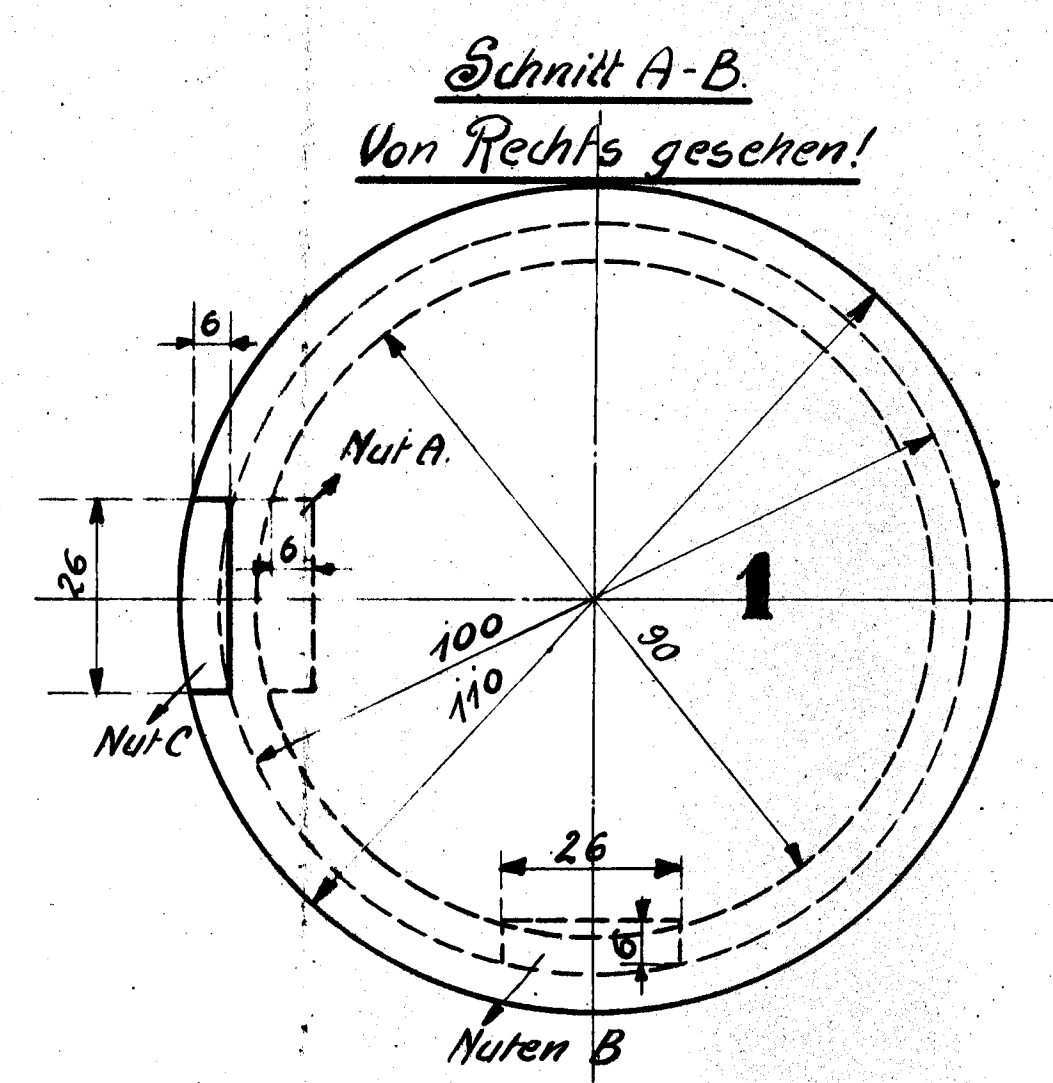
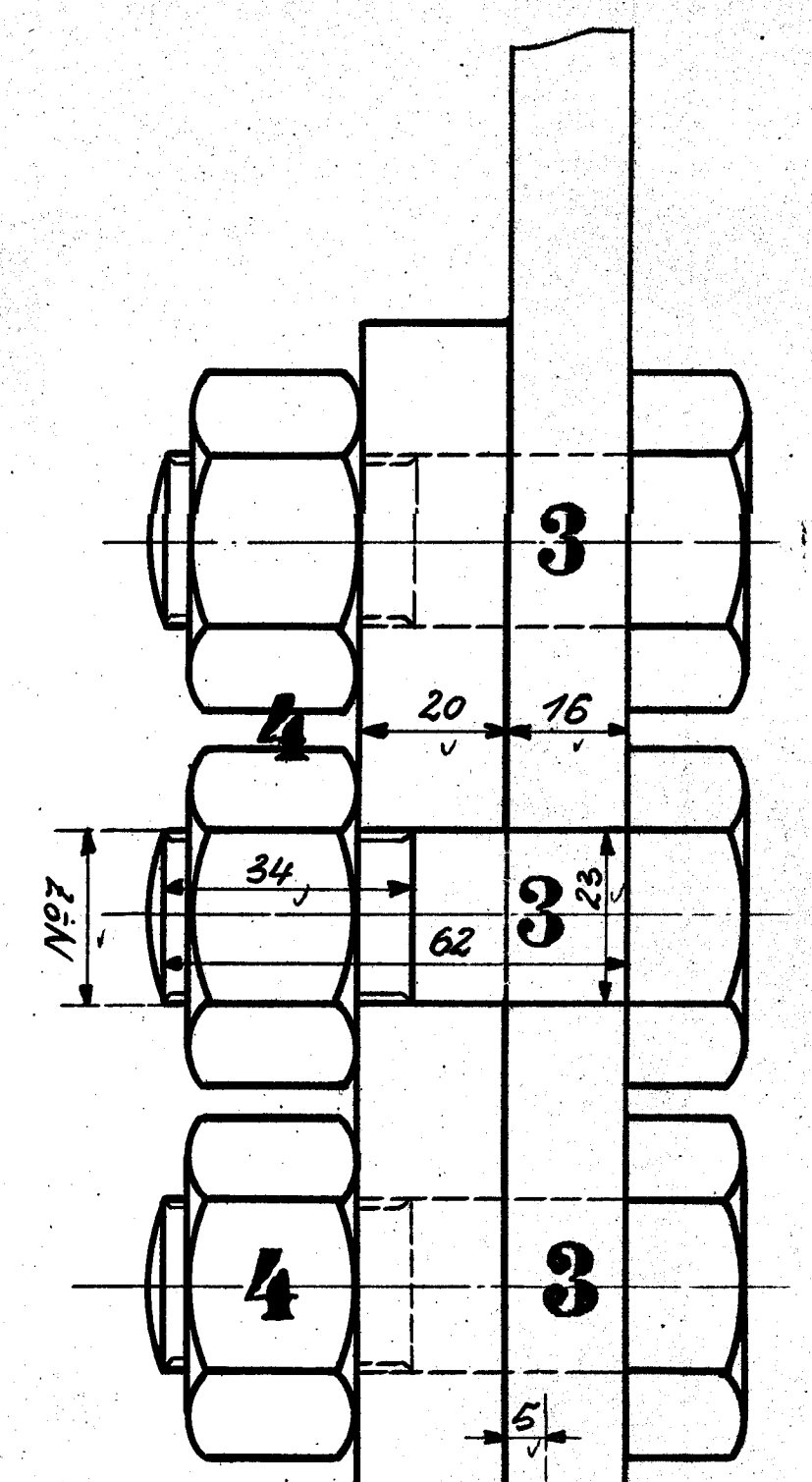
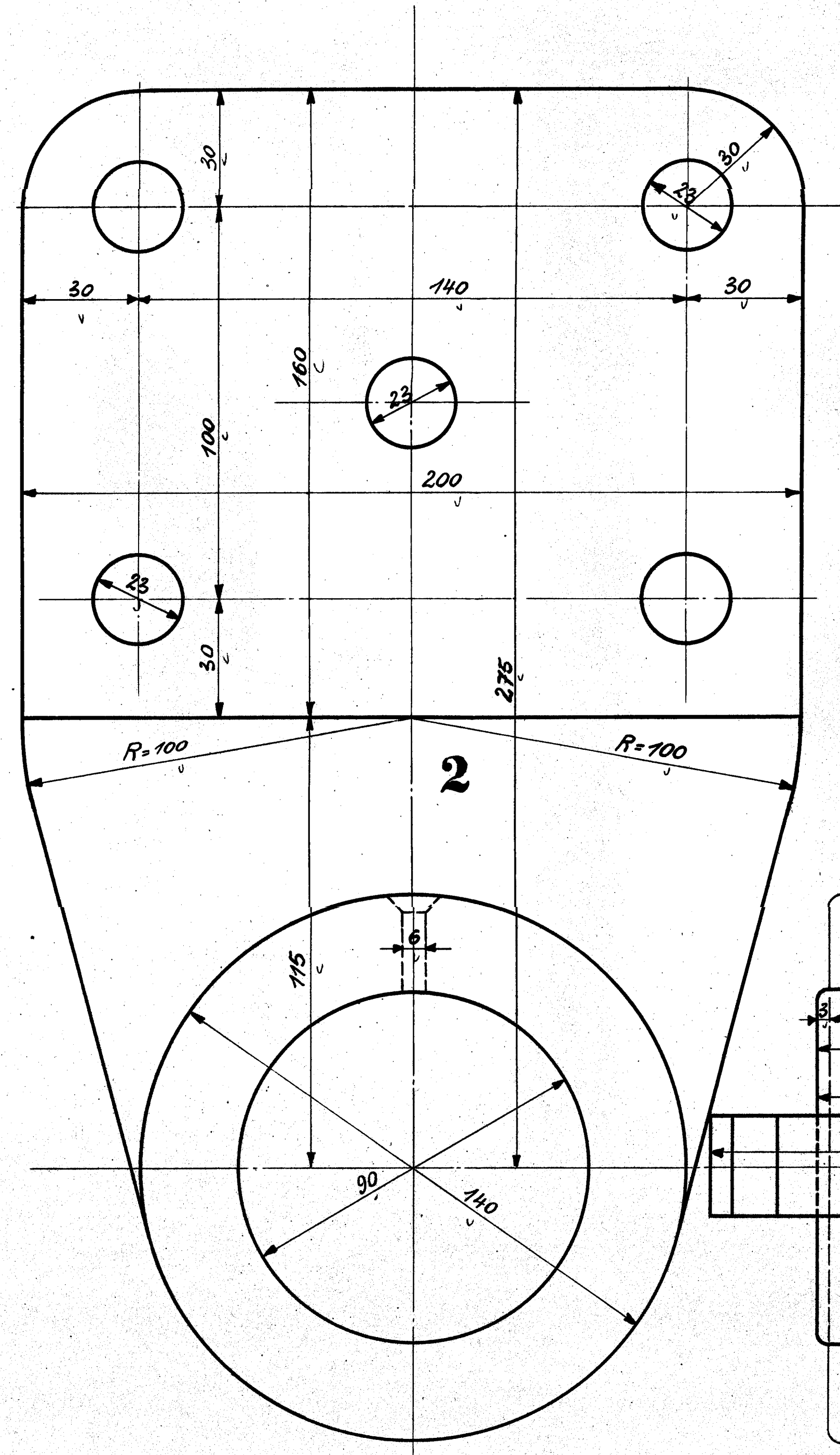


Ausführung für eine Lokomotive					Materialbestellung f. 1 Lokomotive		Fertig Gewicht
Stückzahl	Benennung	Nummern	Material	Werkstatt	Zeichen Pos.	Dimensionen u. Modellzeichen	Kg.
1	Bremswelle	1	Fl. E.				
2	Bremswellenlager	2	" "				
10	Schrauben $\frac{7}{8}$ "	3	" "				
10	Muttern dazu $\frac{7}{8}$ "	4	" "				
1	Keil	5	Stahl				
2	Keile	6	" "				
1	Keile	7	" "				



HENSCHEL & SOHN  
CASSEL

Bremswelle u. Lager

Bremswelle u. Lager  
z.d. 1 C1-Heißd.-Tender-Lokomotive

Fabr. N°

Zeichn. N° 253