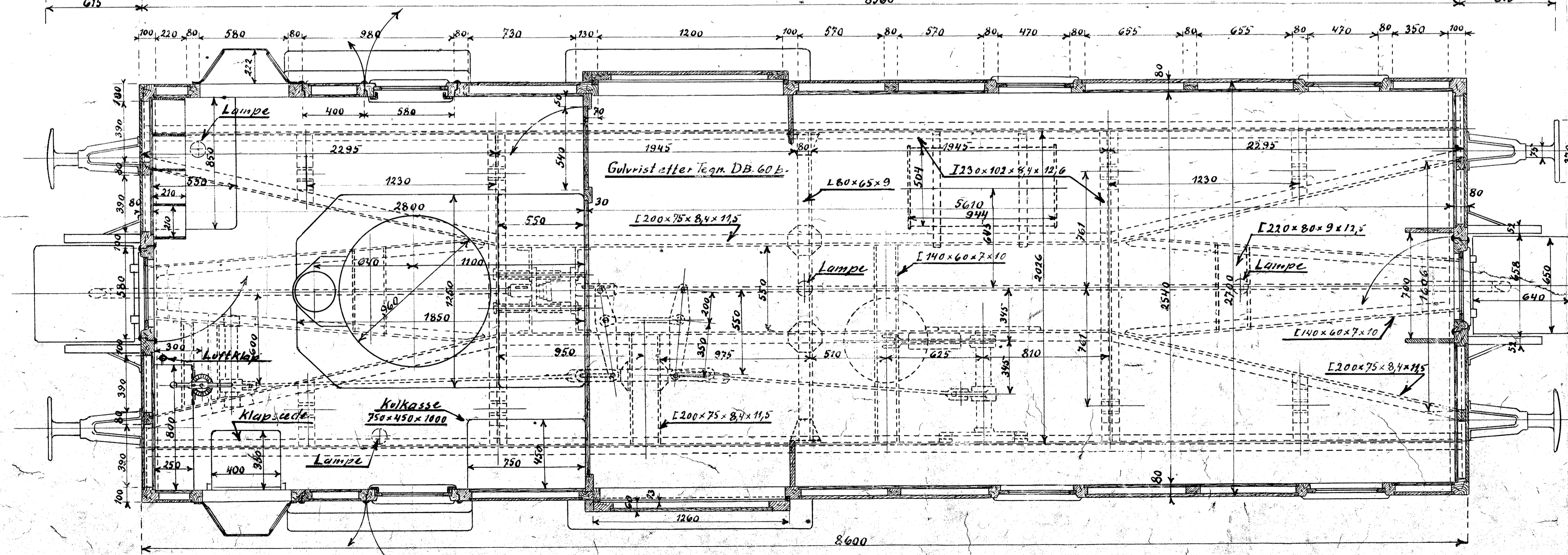
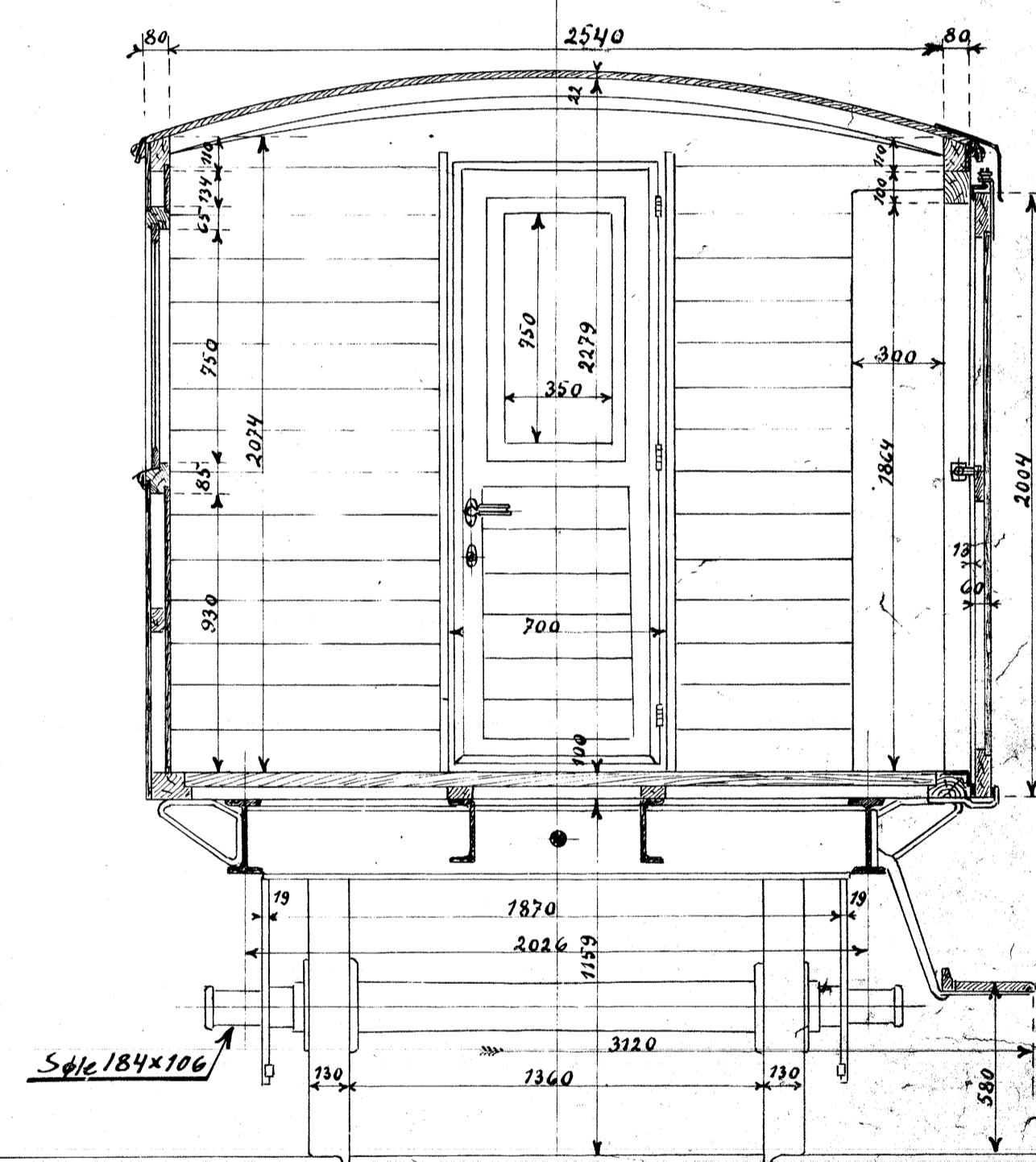
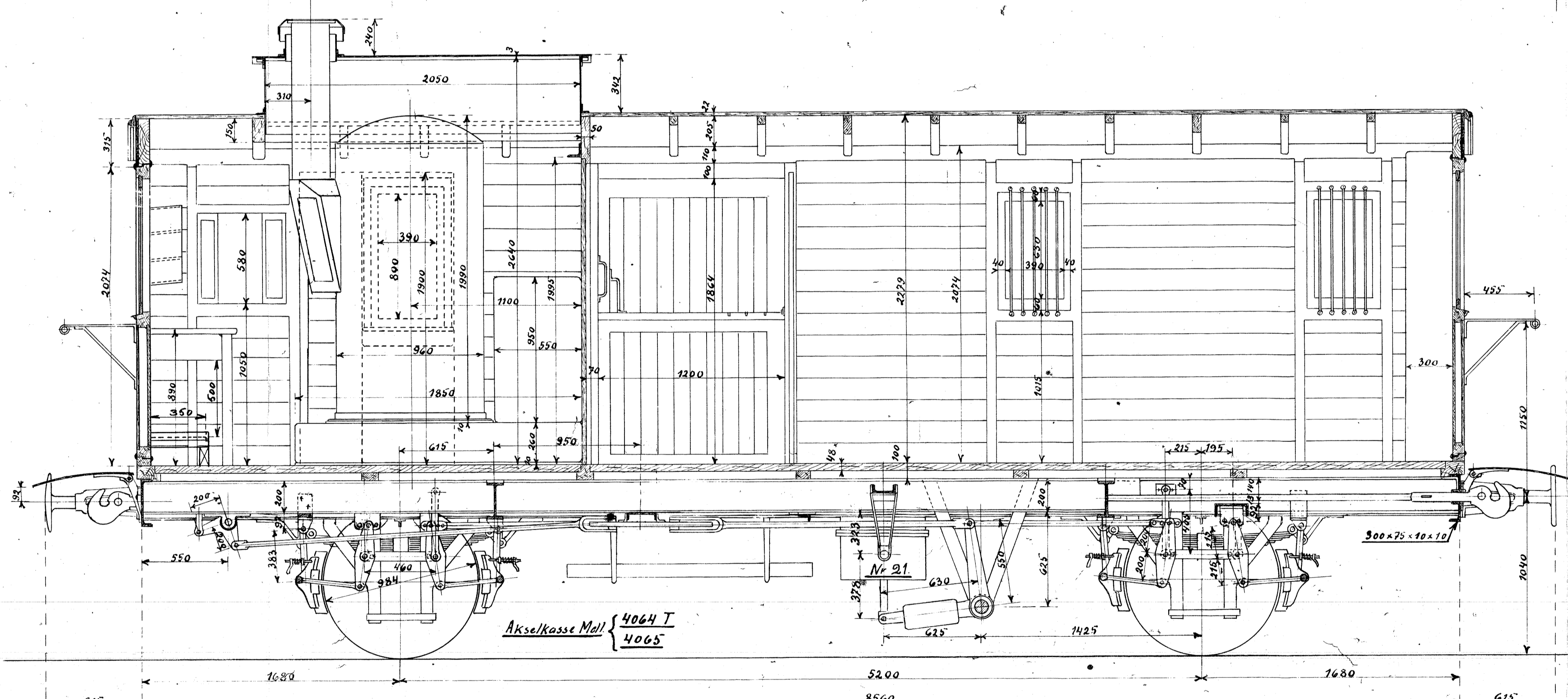
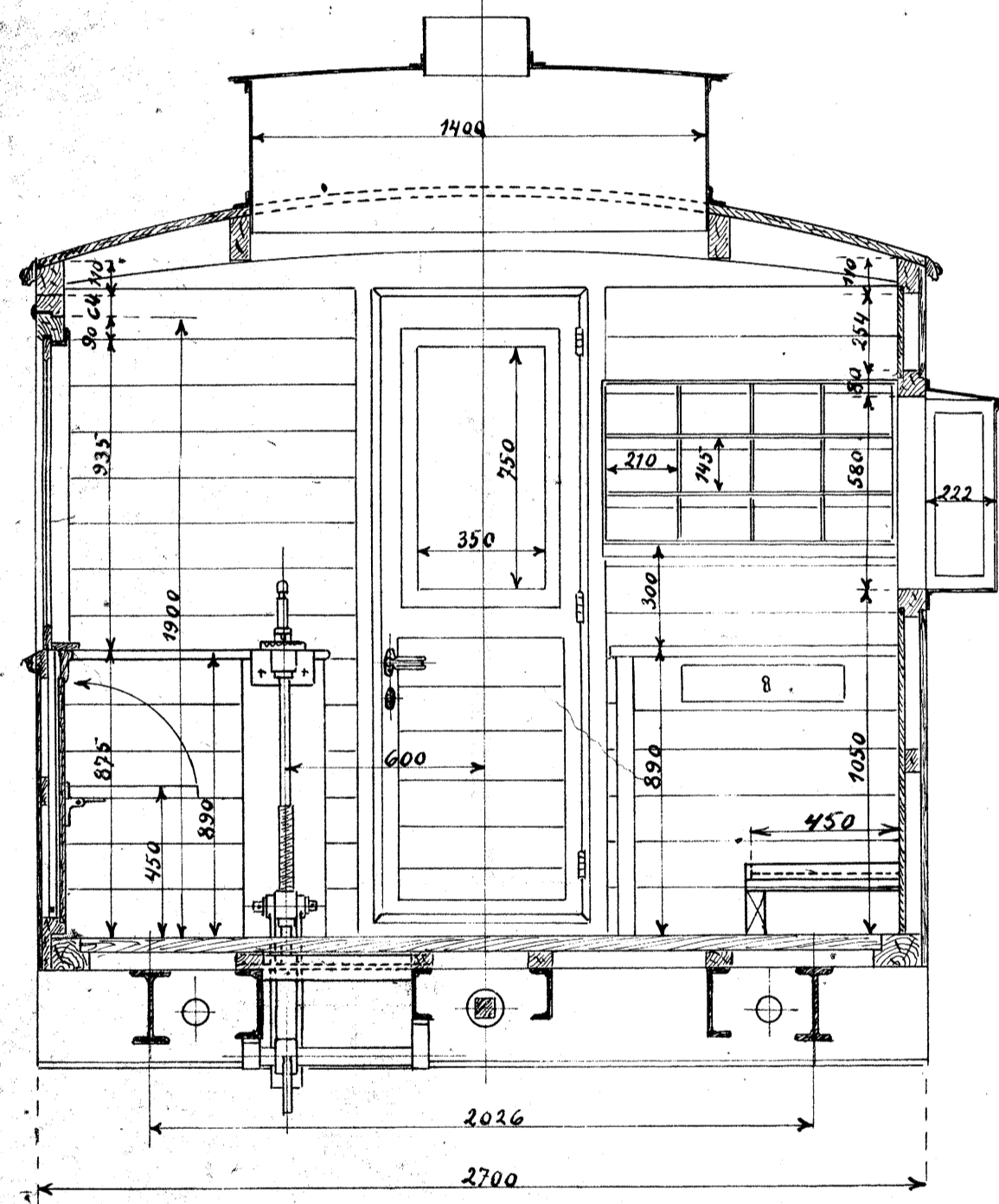
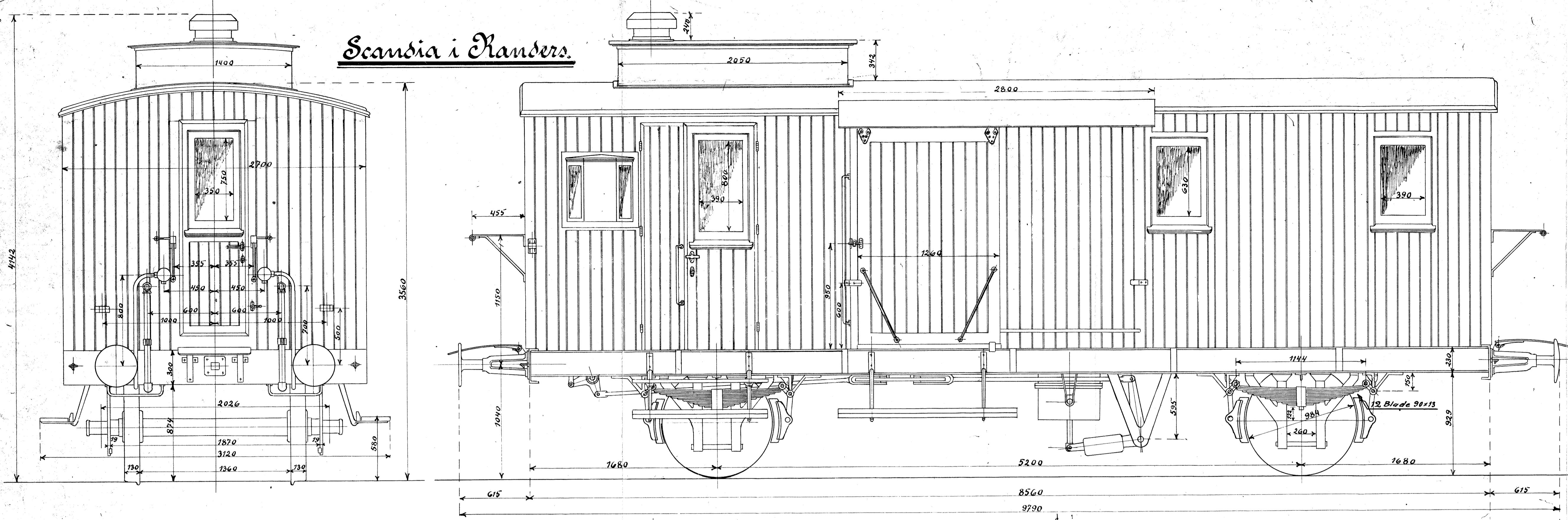


Scandia i Randers.



- 17-23 Maal paa Vacuum-potten ændret. 1922
- 24-25 Ophængning af flyvende Arme ændret. 1922
- 26 Gulvrist. Teg. D.B. 60. b. "
- 27-29 Sidebænk i Kedelrum ændret. 1922
- 29 1/2-24 Løghassehylde indtegnet. "

Kedel og Bagagevogn

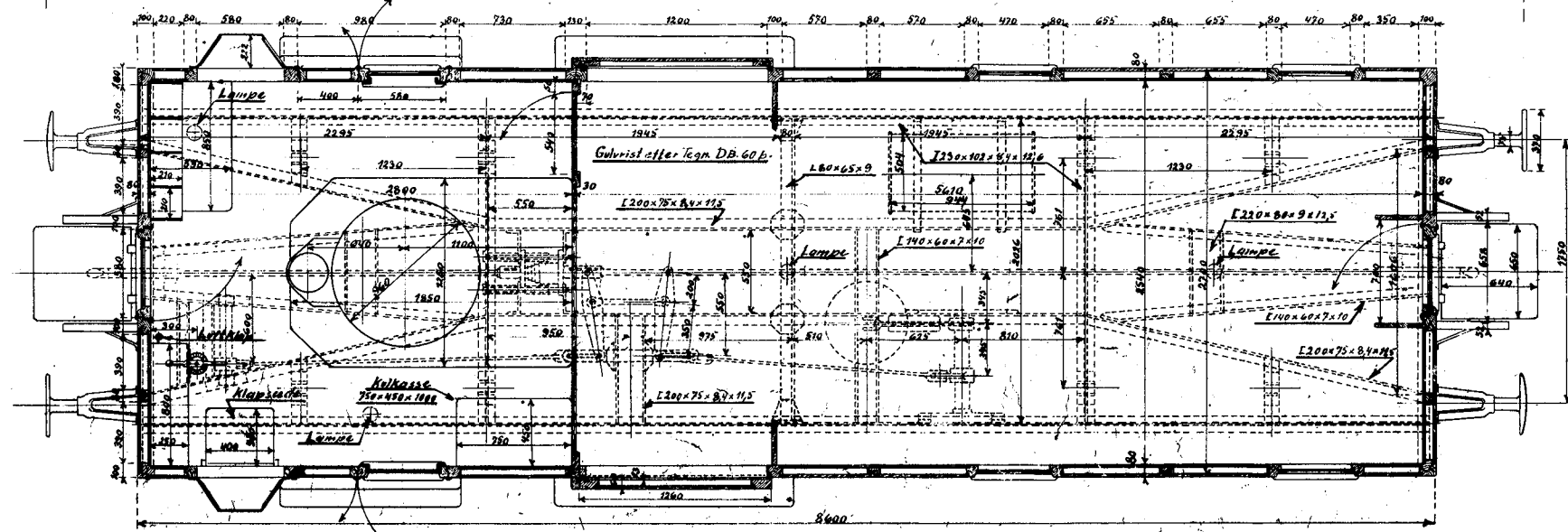
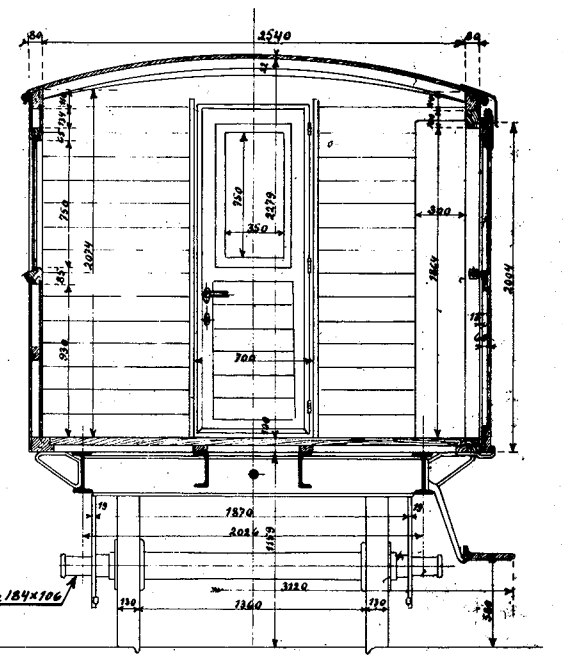
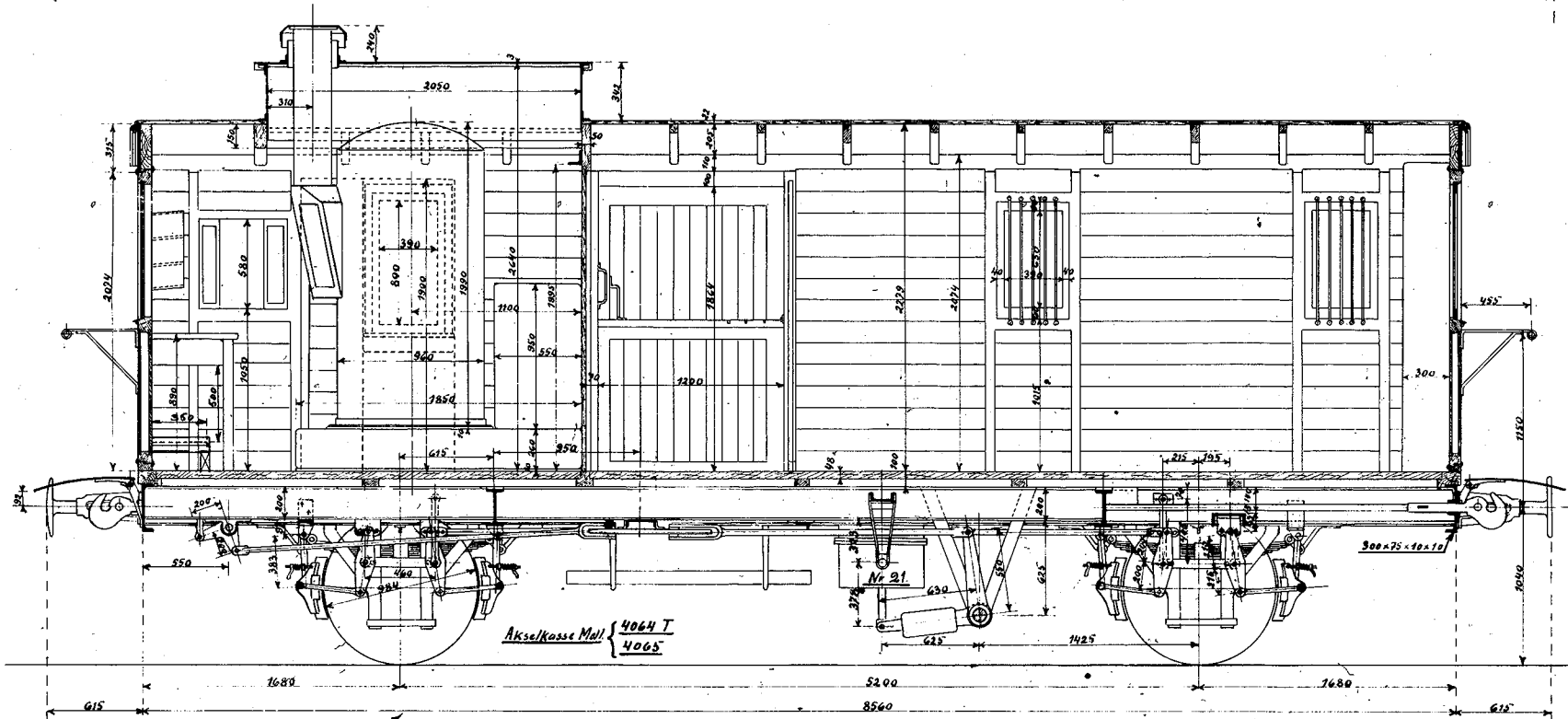
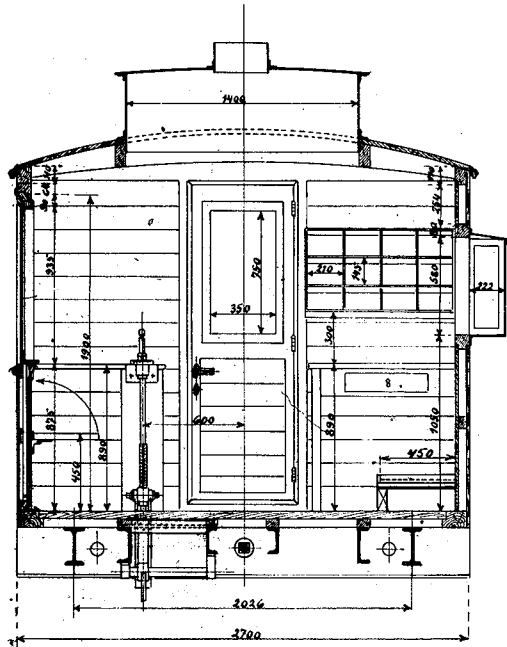
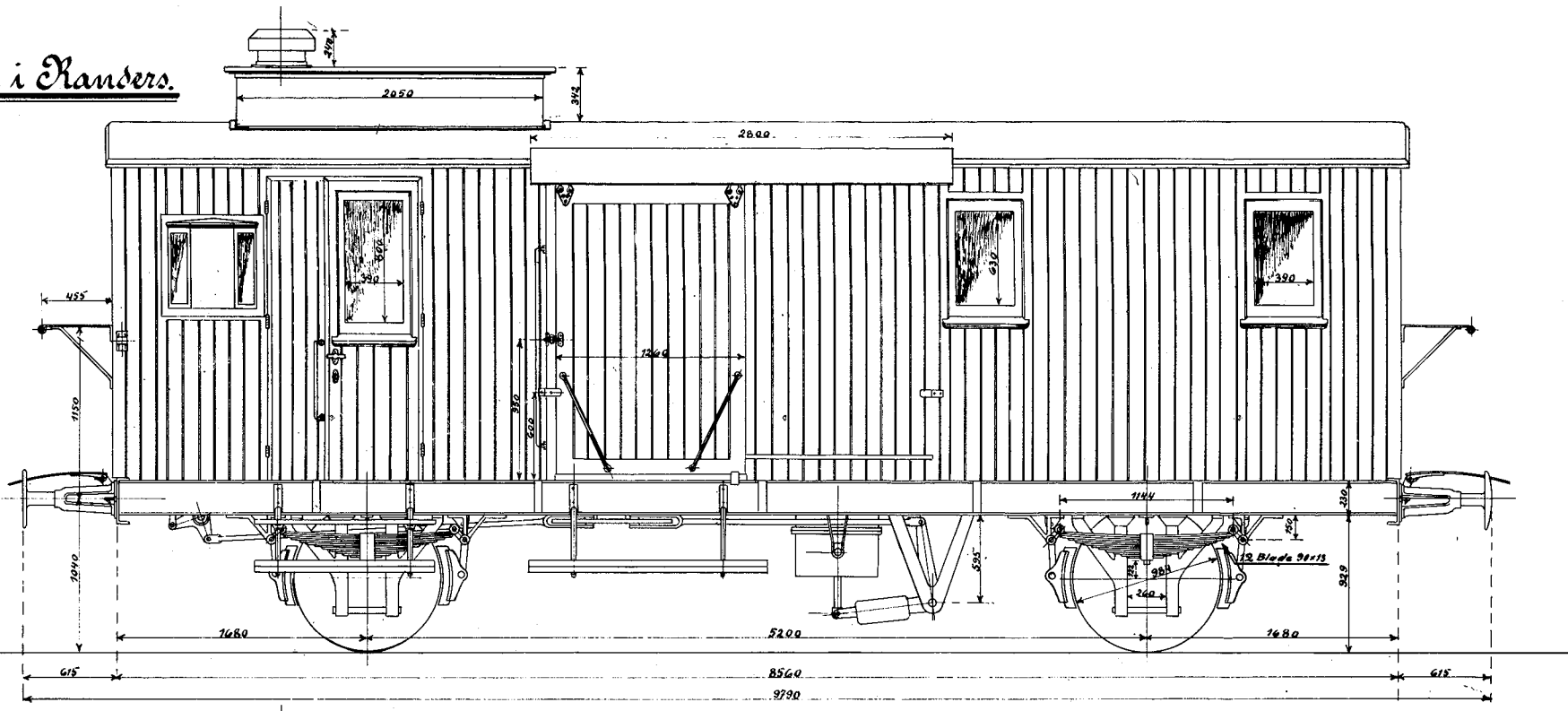
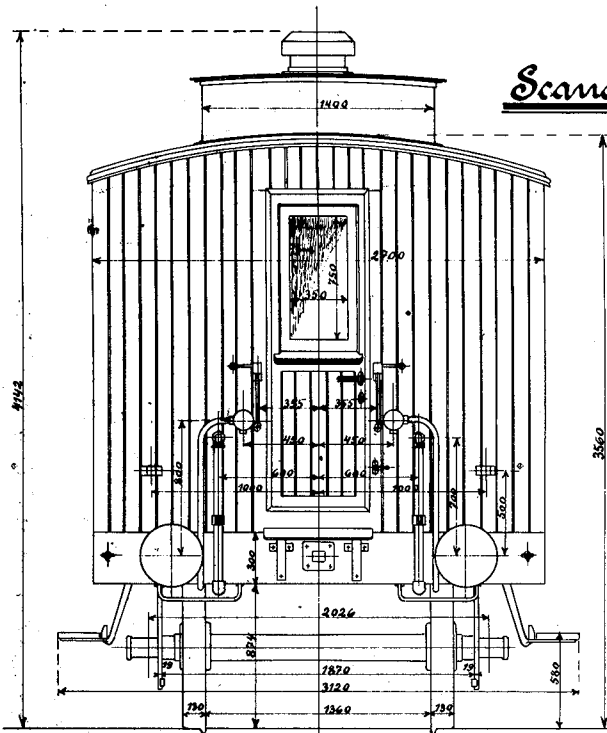
til Skagensbanen.

Ordre 1922.

A 316 TONA  
 Nr. 12560



*Scandia i Randers.*



- 17-23 Mål paa Vacuumpotten i andret. 1922
- 24-25 Ophængning af Lyngsk. Arm. andret. 1922
- 26-27 Gulvrist. Tegn. D.B. 60. b. 1922
- 28-29 Sidebænk i Kædetrum. c.d. 1922
- 30-31 Længdekassehylde. indtegn. 1922

**Kedel og Bagagevogn**

**Kil Skagensbanen.**

**Ordre 1922.**

U. m. H. d. d. 9840 A

**Nr. 12560.**