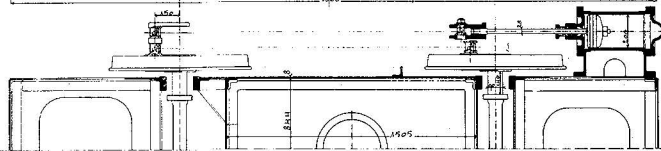
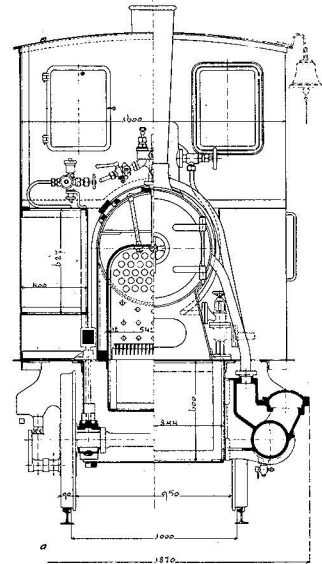
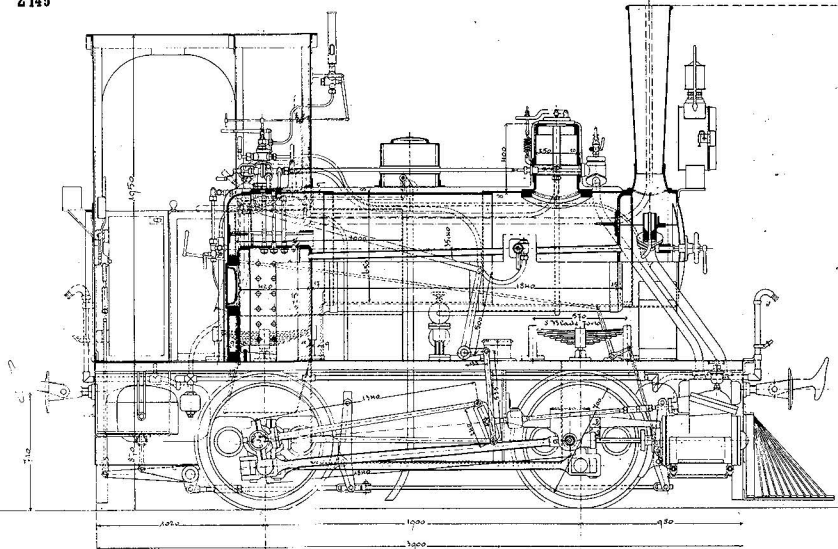


Z 145

Locomotive mit Friedrichsbau-Abwagen Bauart.



Locomotive N^o 2327/8

10 sand abwärts

Zylinderbauart	200 ^{mm}	Baugang	12	Wagenbauart	Tendlerbauart	160 ^{mm}
Zylinderlage	300	Stirnauflagehöhe	1035	Wälzlager		250
Zylinderbauart	306	Wirtelhöhe	915	Wagenbauart	Wagenbauart	7900
Zylinderbauart	1900			Wagenbauart		890

W. Krauss & Co. Linz