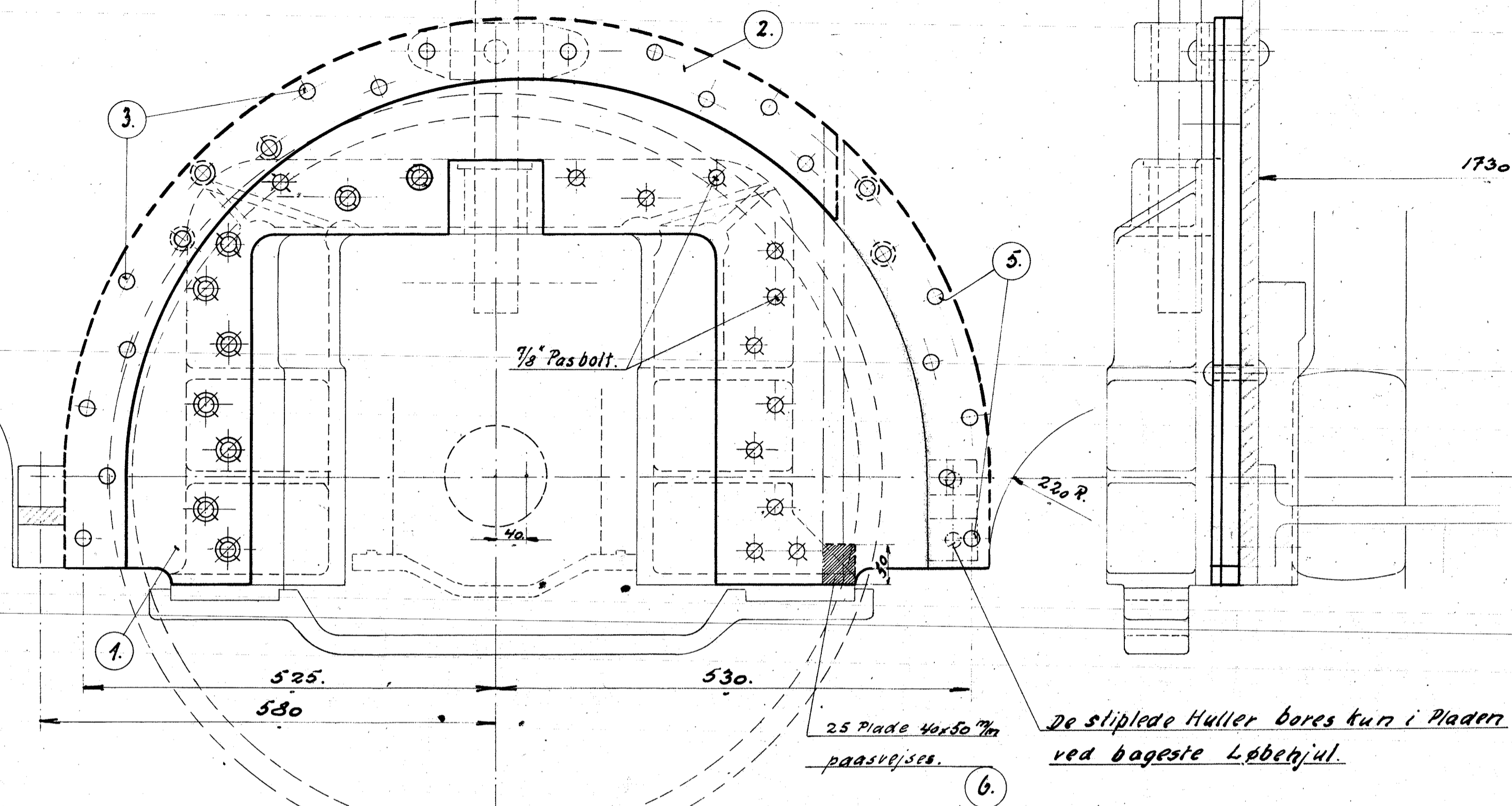
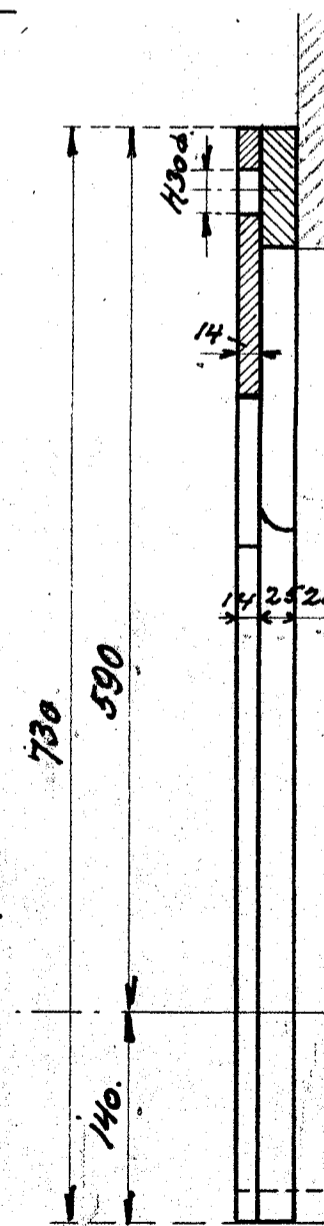
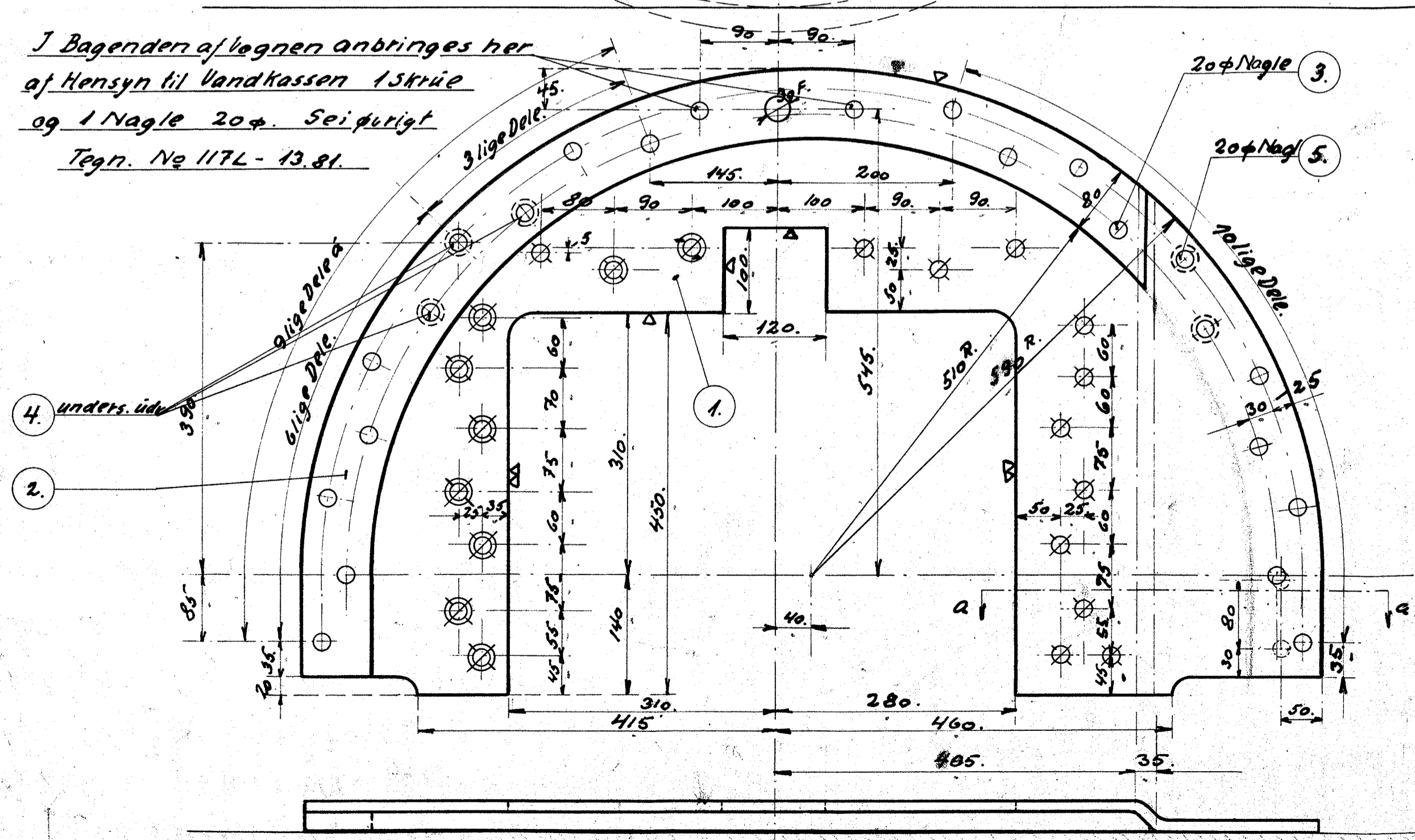


51701.

1	4	Forstærkningsplade	Flusj 1200x750x14	4 Stk.
2	4	Mellemlag.	---	2100 x 1200 x 25
3	44	Nagler. 20φ x 90	Niltej	Best.
4	12	do. 20φ x 80	---	---
5	28	do. 20φ x 70	---	---
6	4	Paasvejsning		Affald.

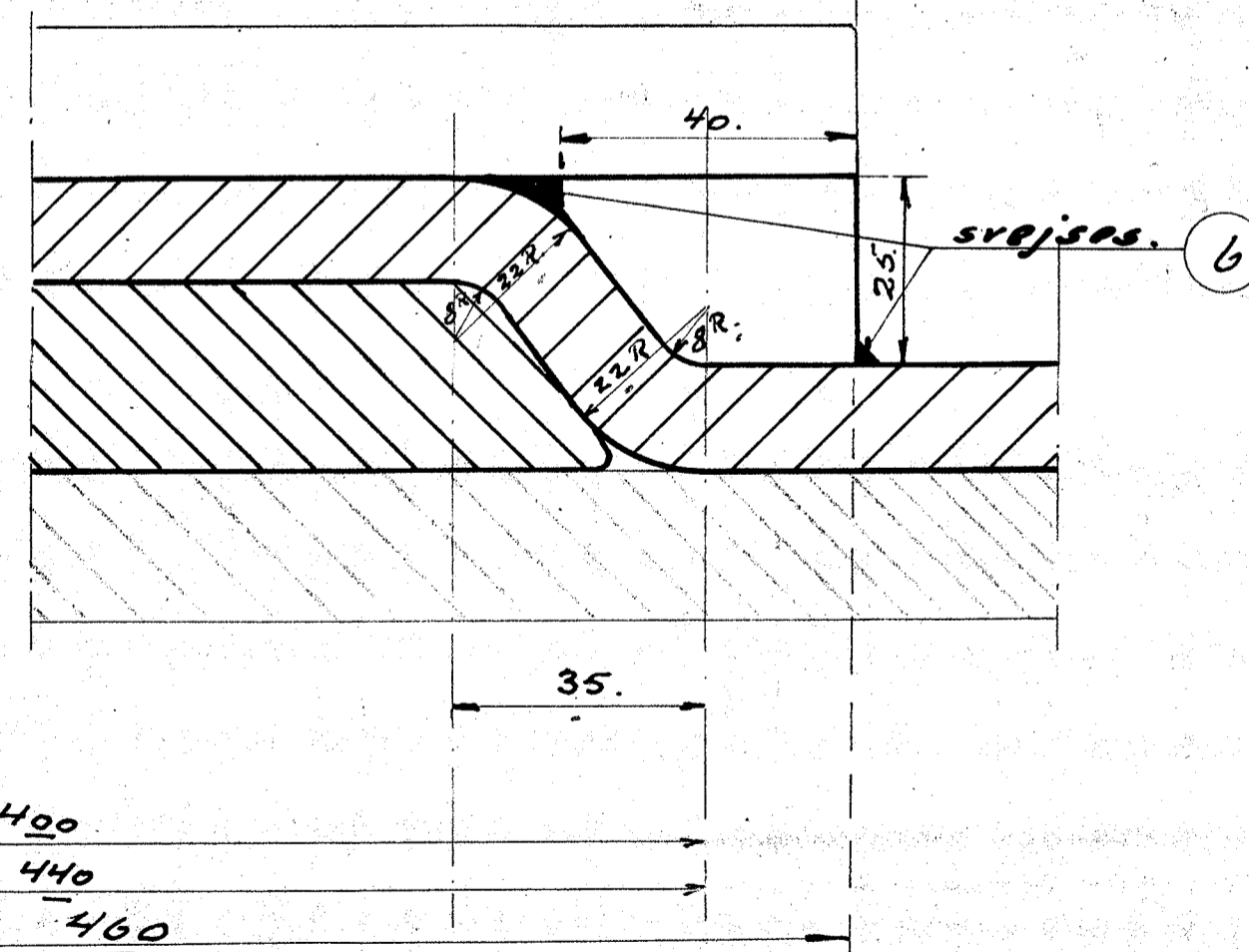


J Bagenden af væggen anbringes her af Hensyn til Vandkassen 1 Skrive og 1 Nagle 20φ. Se i øvrigt Tegn. No 117L - 13.81.



2 Stk højre
2 Stk venstre.

Snit a-a.



Rammeforstærkning for Radialaksel		
Diesel-el 375 HK Motorloko.		
7/2.		
1/2.	1:5	117L-8.07.
7/2-32.		