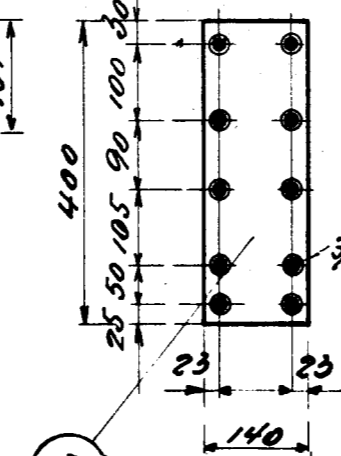


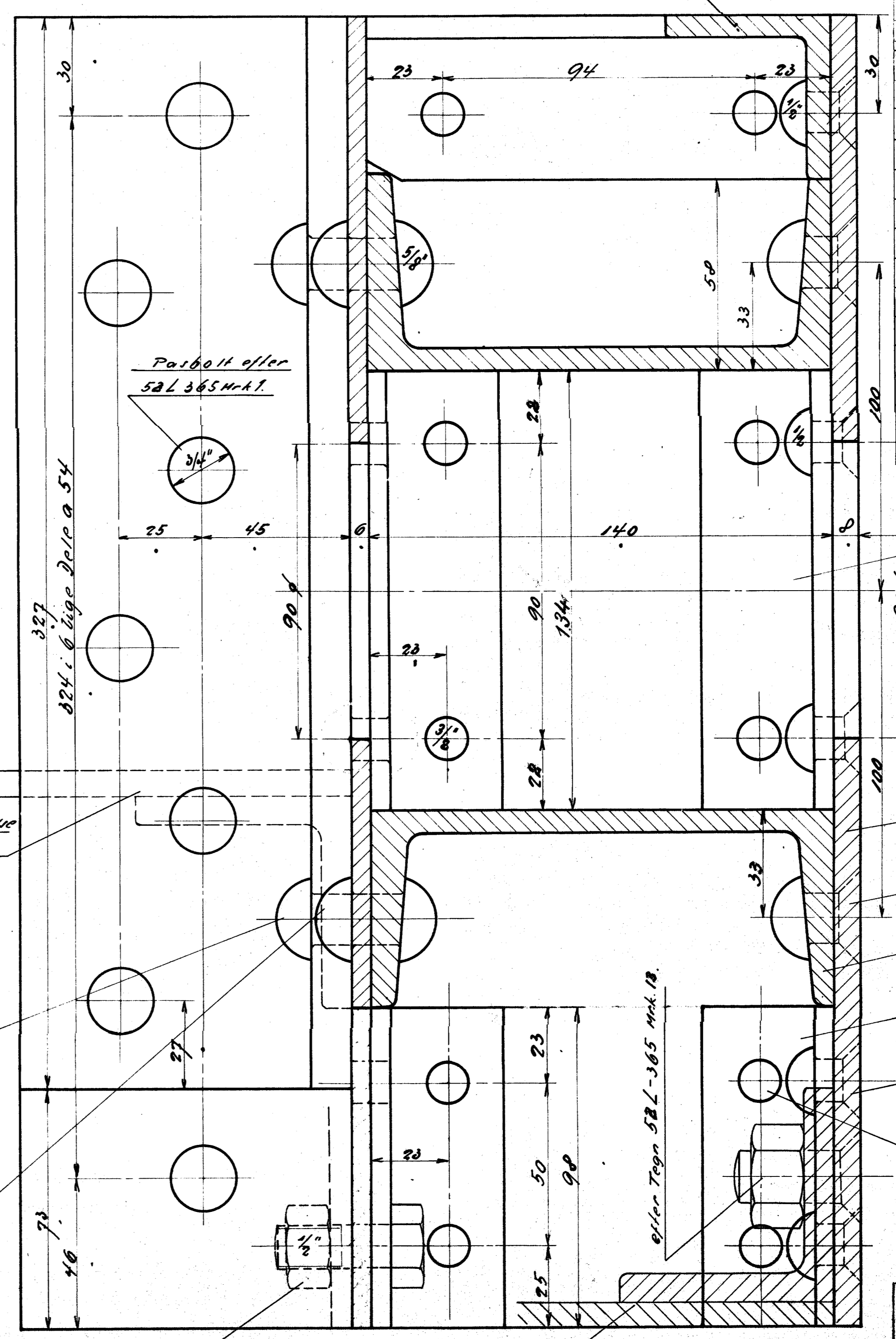
Jisse 2 Huller 90 og bories kun i overste E-Jern, for at endfore Rufferbefastelsesbolte



Hjørneforbindelse se 53L-344.

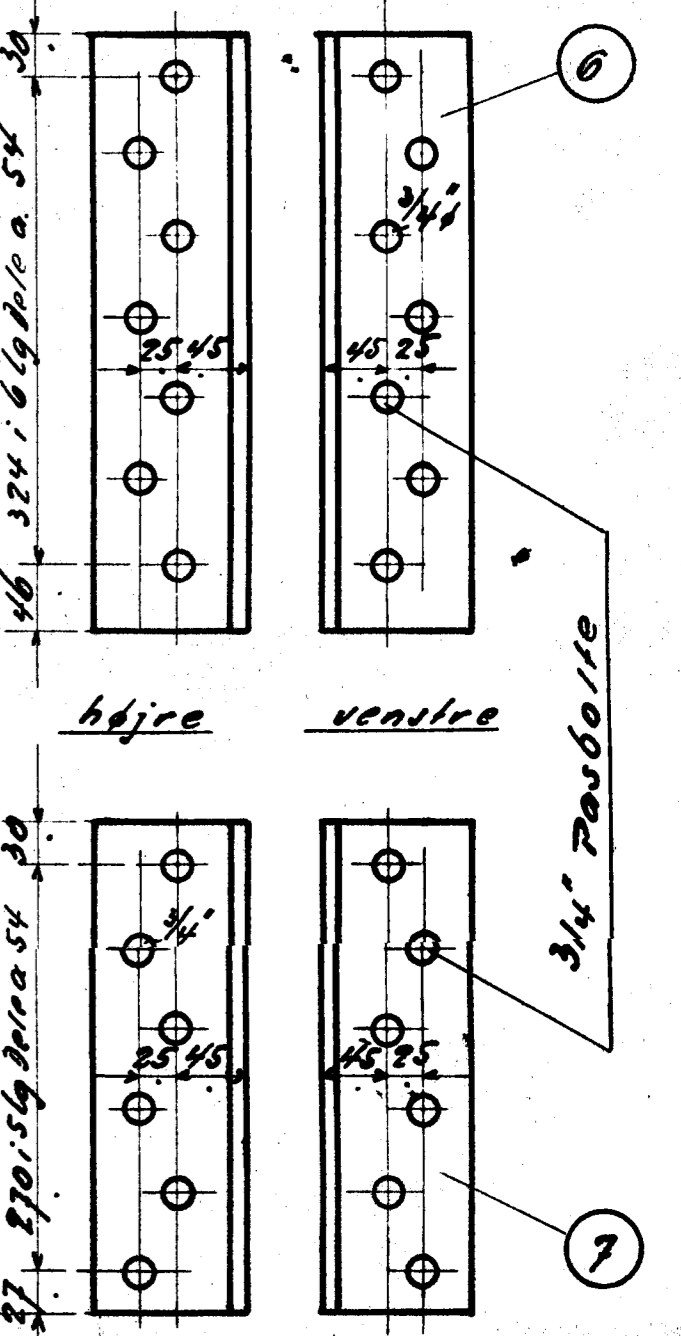
327  
824 i 6 lige dele a 54

eller Teg. 52L-549 Nr. 10



STYKLISTE NO 31163

Nr	Q	BET.	MÅL	MÅL	BEH.	MATERIAL	MATERIAL
			MALE	GRAD			
1	1	Forvæg					2170.400
2	1	Ragvæg					2170.400
3	2	Sidevæg					800.140
4	2	E-jern NR.14	2142				4340
5	1	L 50.50.7	ca. 2450				2450
6	2	L 100.100.12	400				1500
7	2	L . . .	327				
8	4	L 40.40.6	134				1000
9	4	L " " "	98				
10	17	Nitter 1/2"	25				
11	20	"	20				
12	8	"	5/8"				
13	22	"	40				
14	22	"	30				
15							



- Signatur:
- 1/2" Nitte
  - 5/8"
  - 3/4"
  - 7/8"
  - " Underjærkel
  - Bolt.

**A/S FRICHS AARHUS**  
**Forreste Rufferplanke**  
 1C NT Lokomotiv

TEGNET AF: <i>AK</i>	MAALESTOK	TEGNING NR. 57.9
REVIDERE AF: <i>MM</i>	1:5	
DATE: 25.9.20	1:10	53L.338