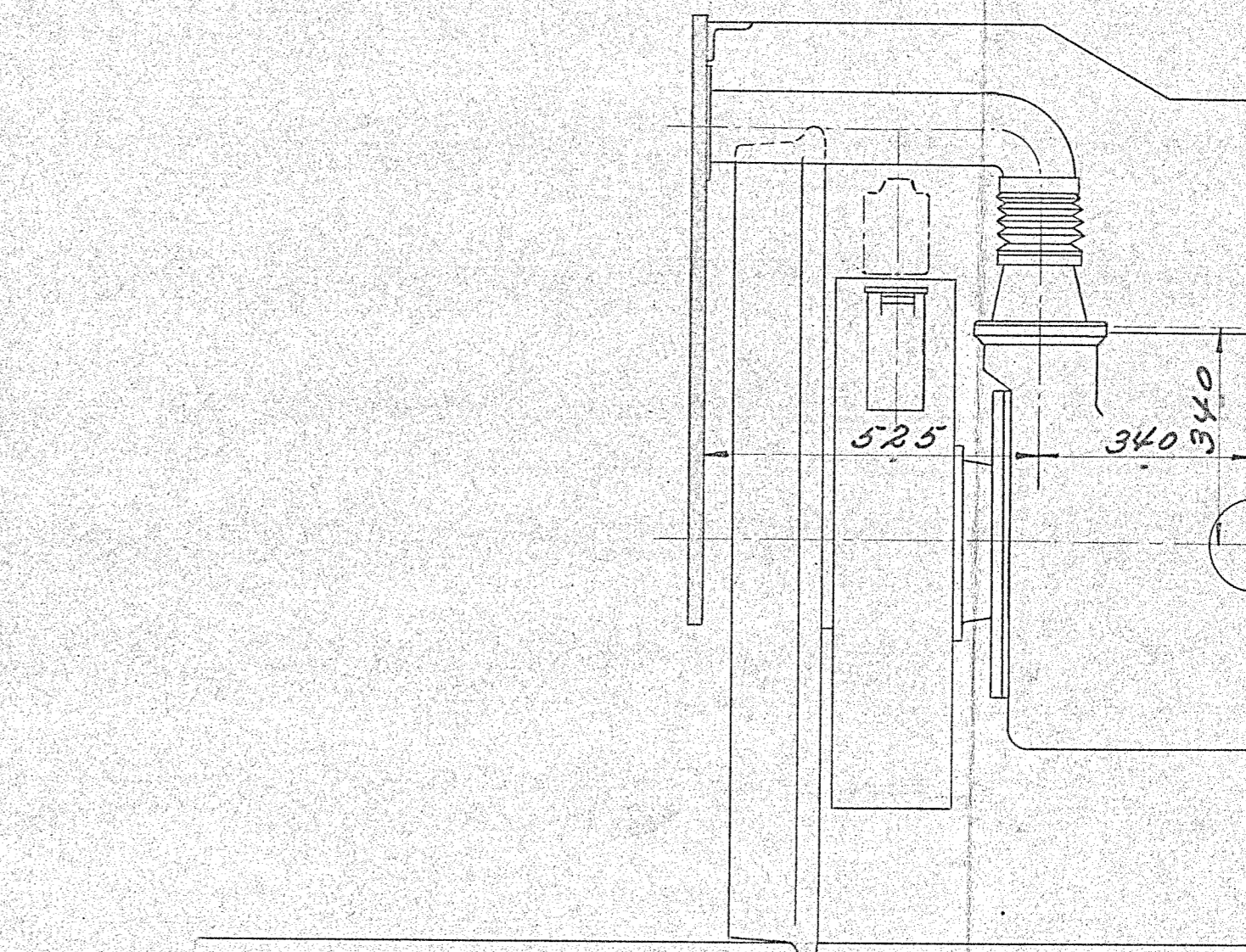
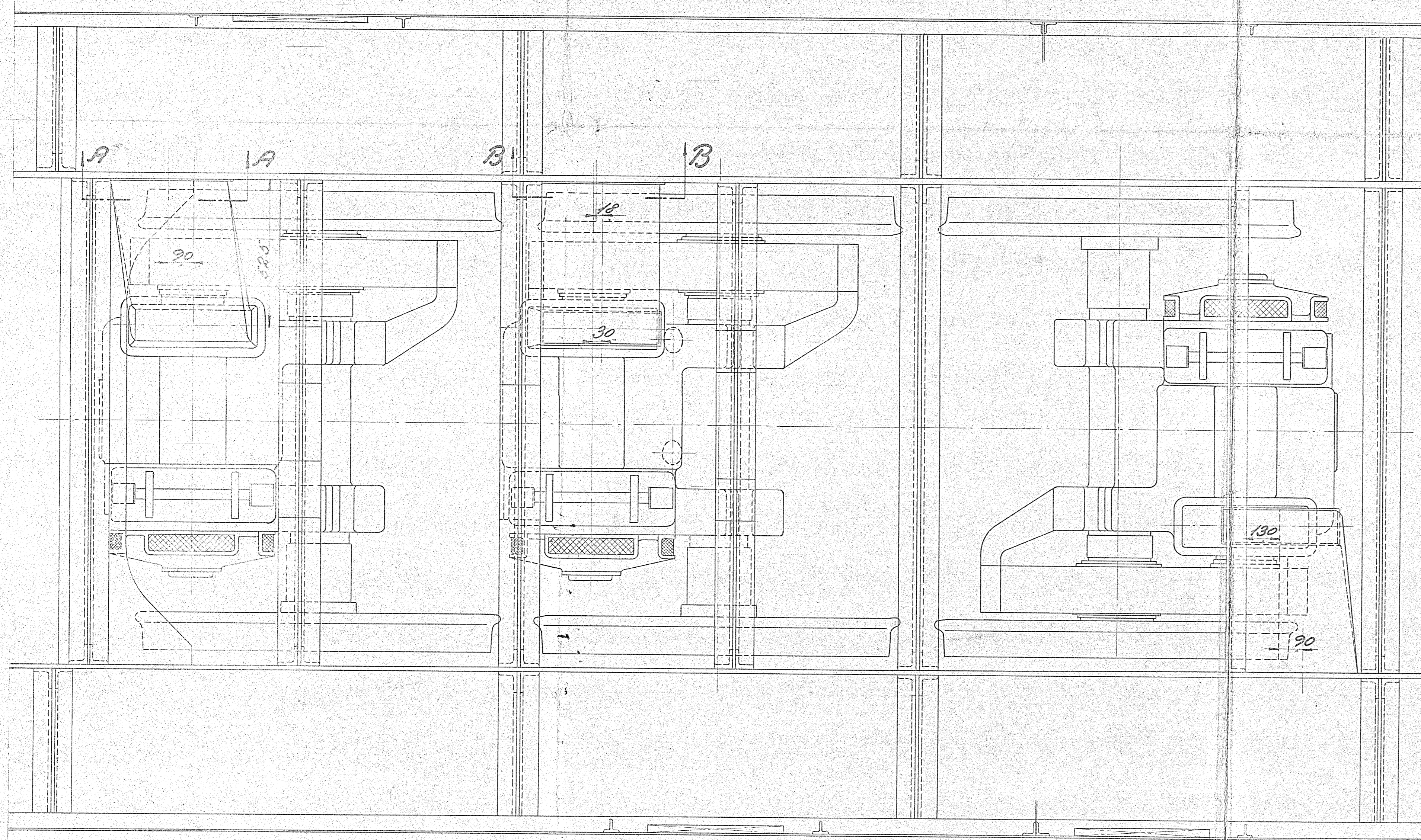
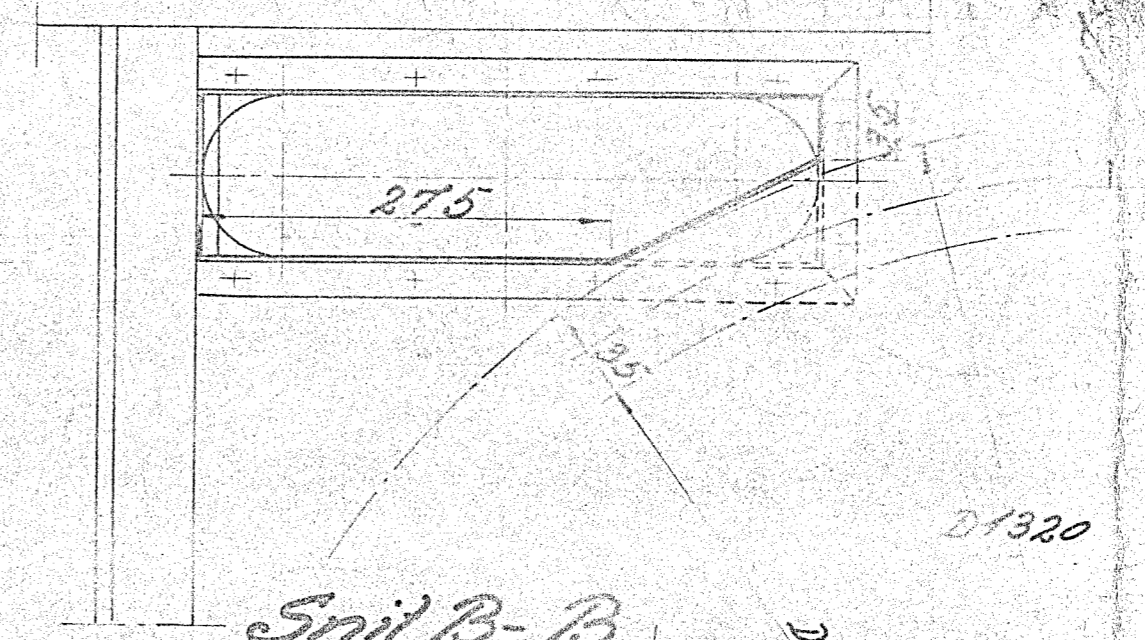
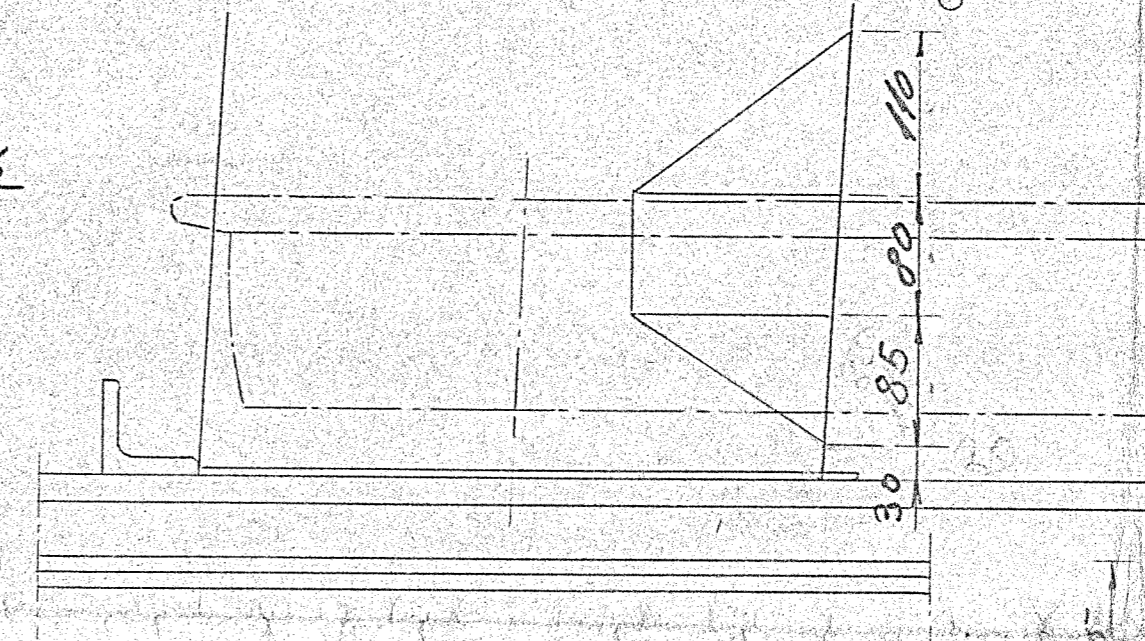


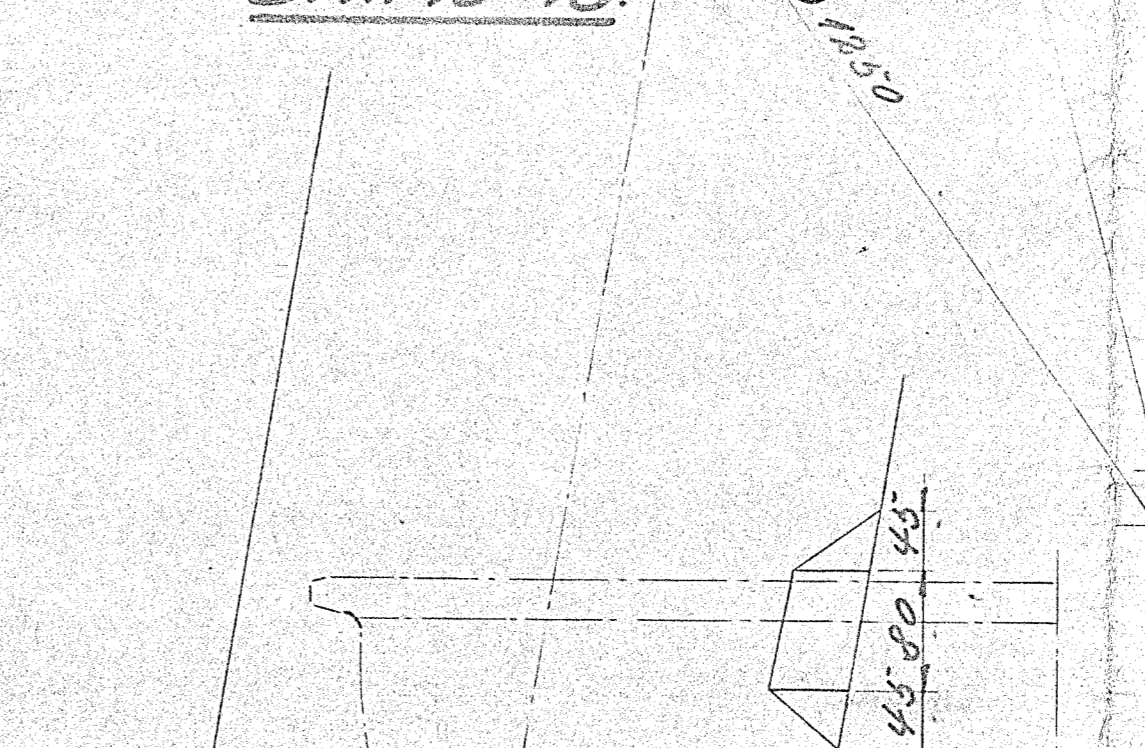
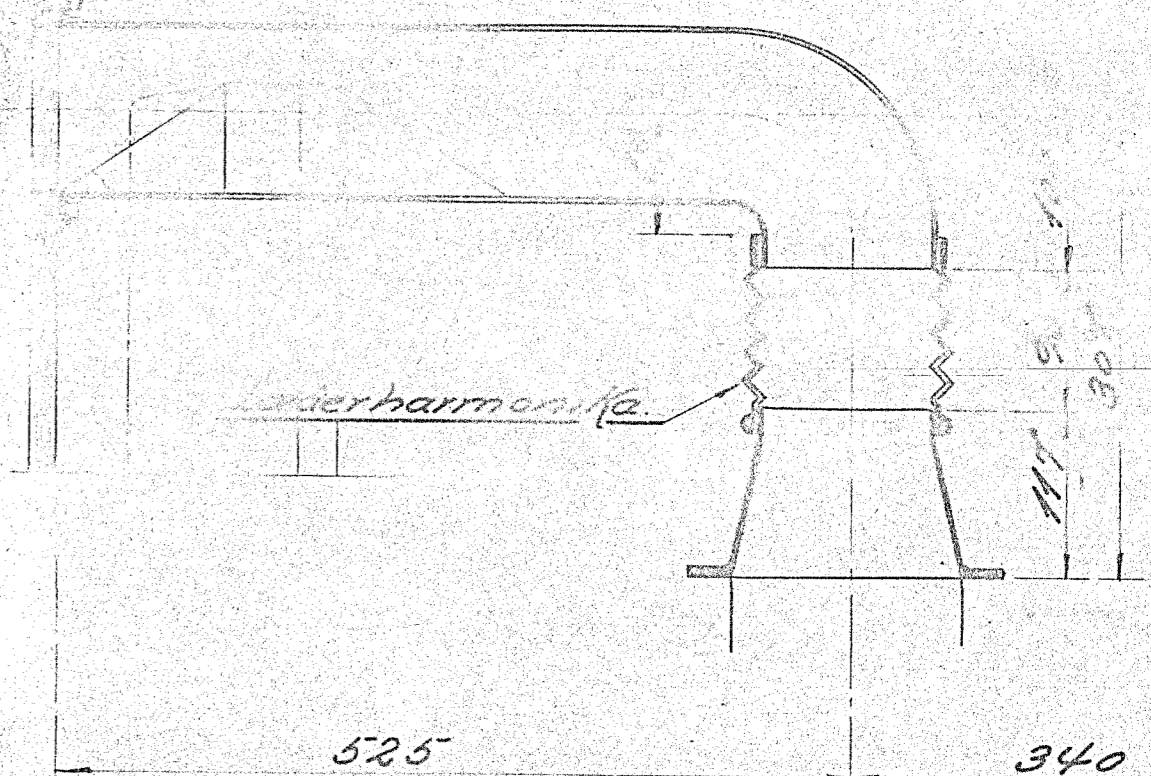
Elektromotorer se Teg. 1171-2136



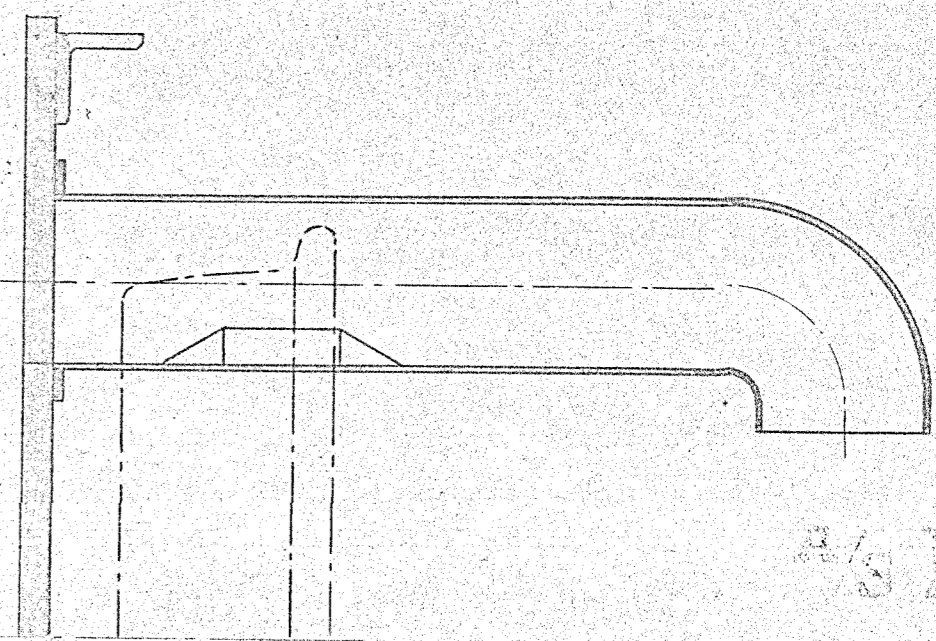
Gennemstrømningsareal
 Ved Elektromotoren: $15 \cdot 46 = 690 \text{ cm}^2$
 Mindste tværsnit i Luftkanal
 $3 \cdot 12 \cdot 15 = 540$
 i Rammeplade: $30 \cdot 110 = 3300$



Snit B-B



Snit A-A



Romentallene refererer til Teg. 1171-2160

Luftkanal til Elektromotor
 Diesel-ol. 40/45 M/Torvald

af Rørst.	1.10	TEGNING Nr.
af 895	1.25	1171-2155
28-1-32		