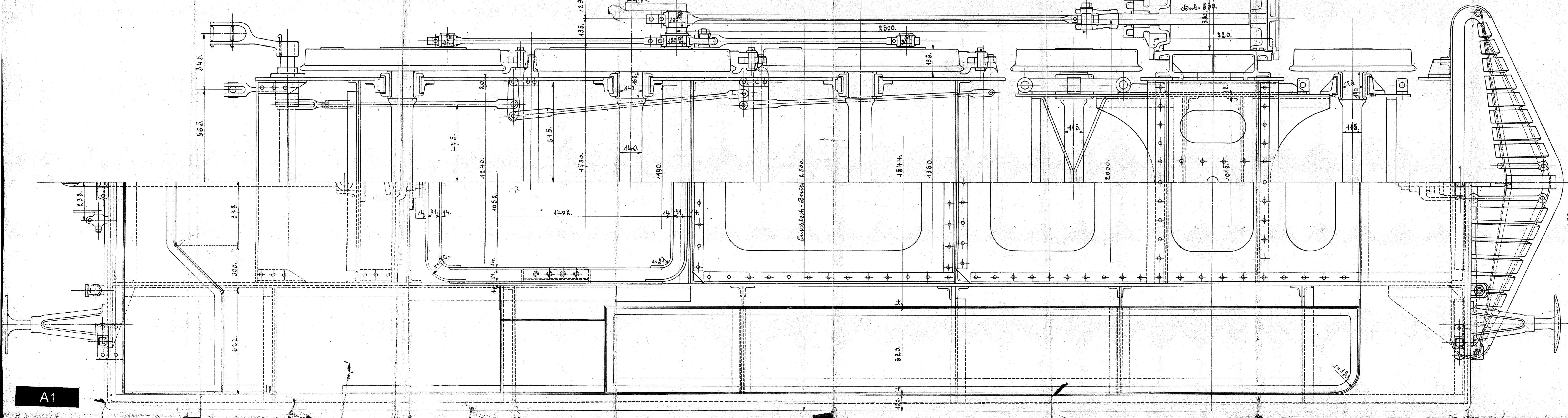
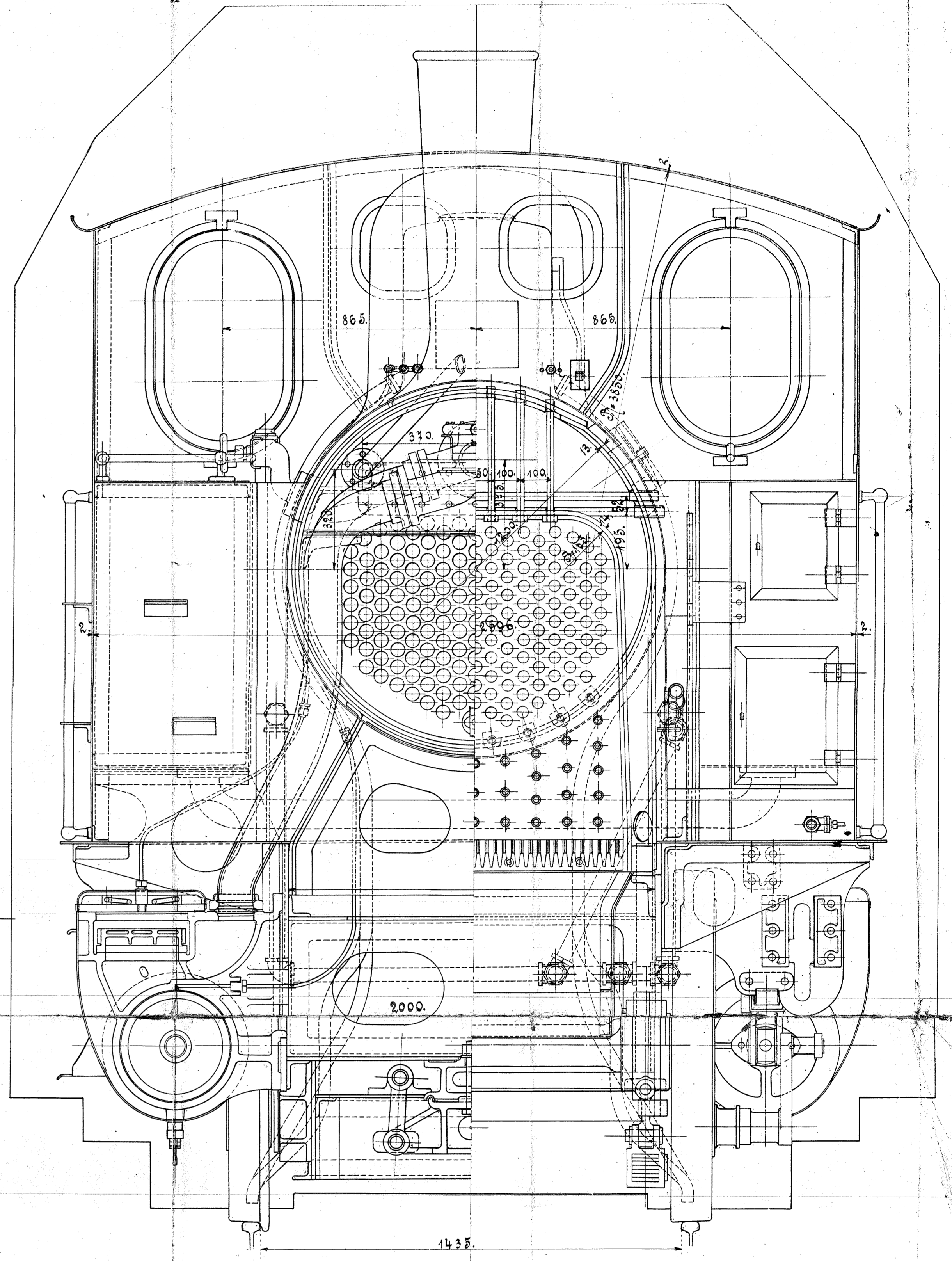
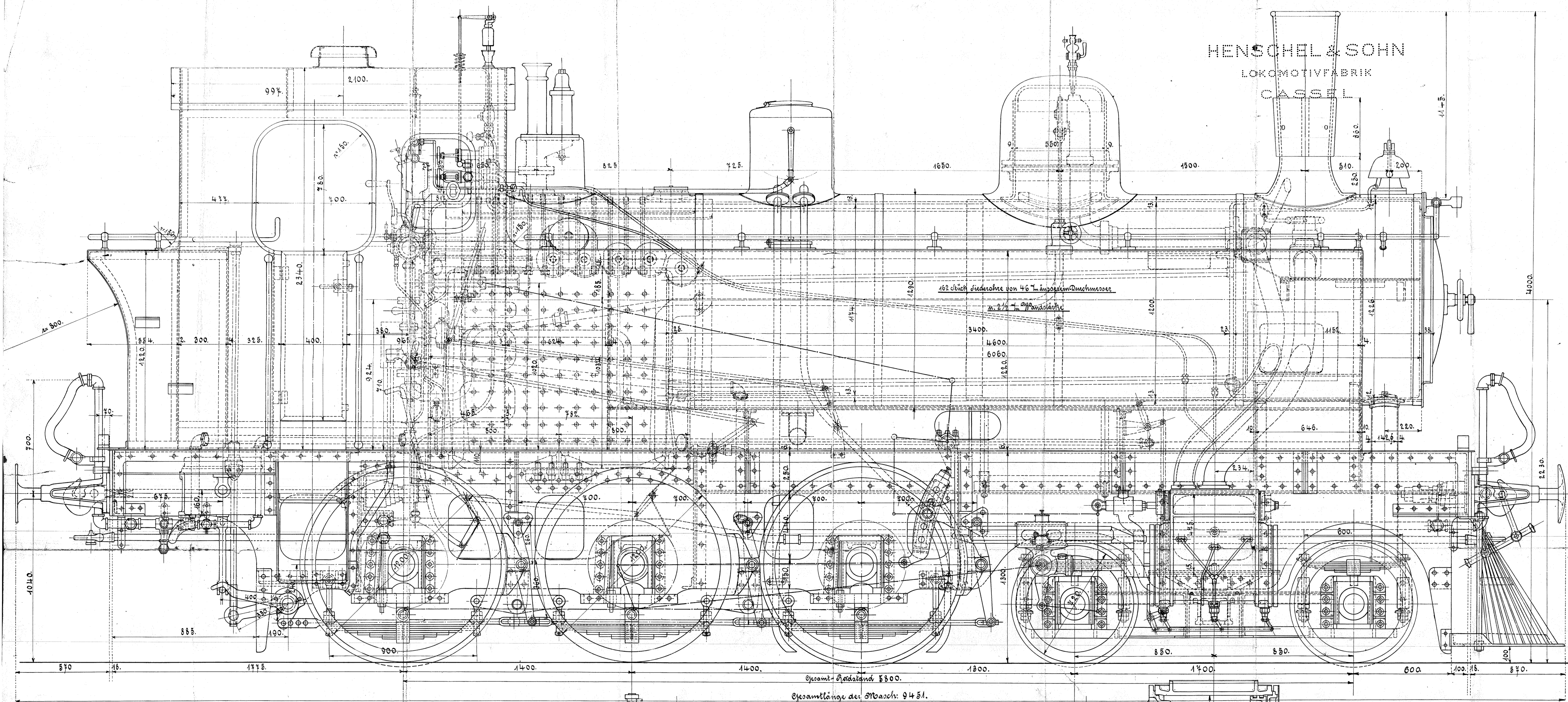
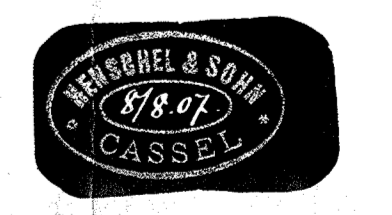


HENSCHEL & SOHN
LOKOMOTIVFABRIK
CASSEL



Maßangaben der Lokomotive.

Zylinder-Durchmesser	= 380 mm	Reisfläche	= 55,3 qm
Kolbenhub	= 580 mm	Motorsoccat	= 4,8 dm
Freirad-Durchmesser	= 1200 mm	Kohlenvorrat	= 1,5 cbm
Raufrad-Durchmesser	= 480 mm	Reergewicht	= 31,4 t
Dampfdruck	= 12 kg pro cm ²	Reisgewicht	= 40 "
Reisfläche	= 147 qm	Reibungsgewicht	= 27 "
Zugkraft	= 4750 kg		



3 gek. Tenderlokomotive
für die
Salsinger - Hornbäck - Bahn

Fabr. Nr. 8142. Bl. Nr. 524.