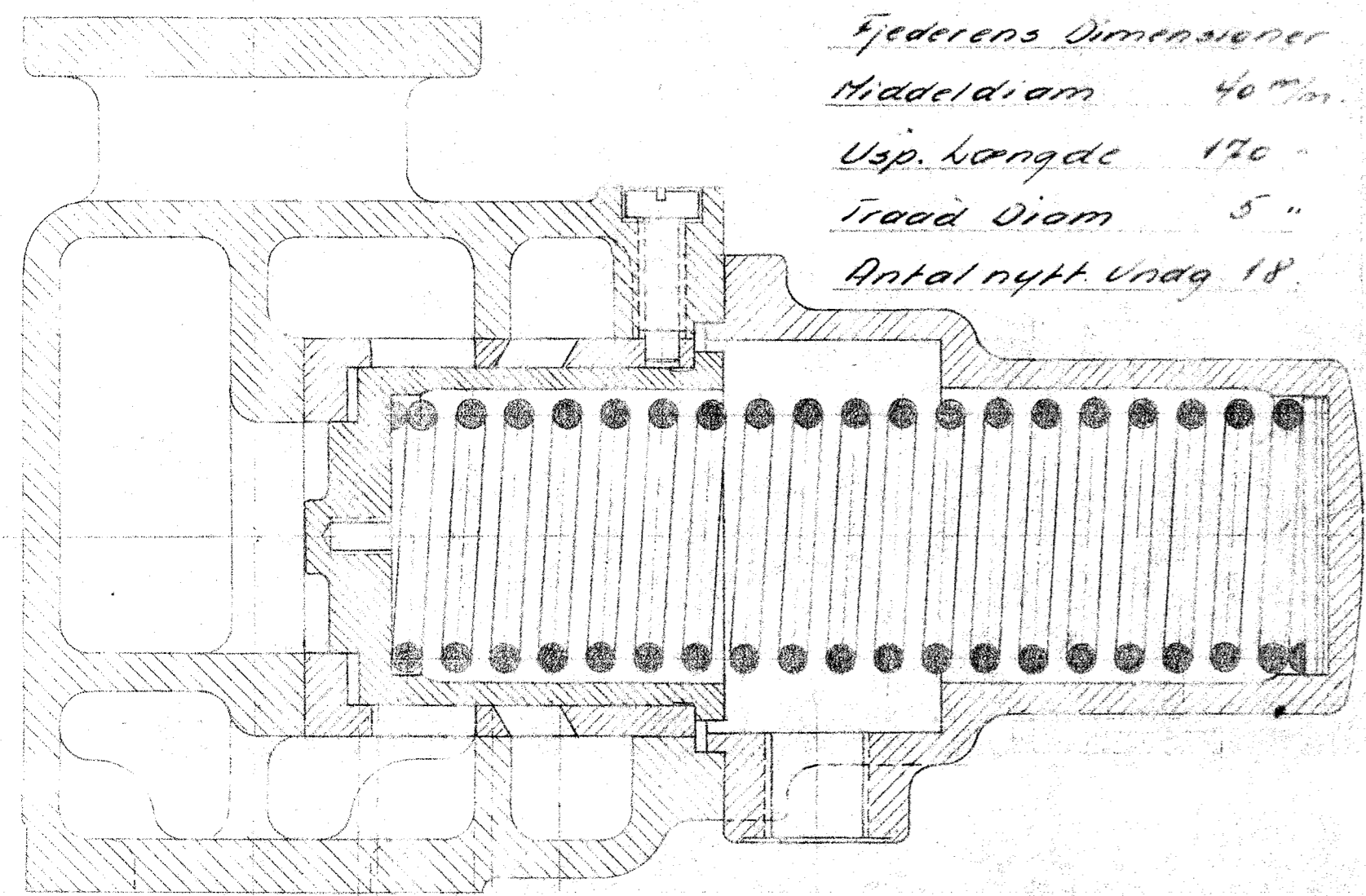


Ejederens Dimensioner
 Middeldiam 40 mm.
 Usp. længde 170
 Tråd Diom 5"
 Antal nytt. Vandg 18.

Best. Tegn.
 6X 288.

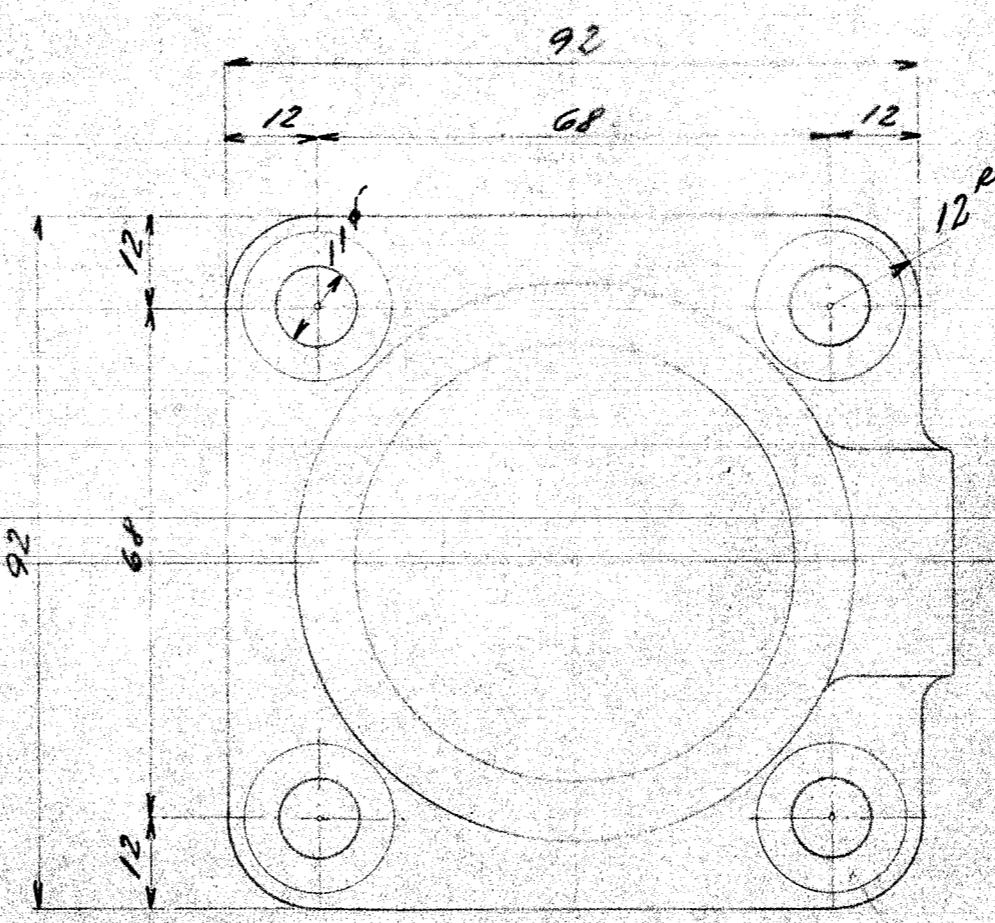
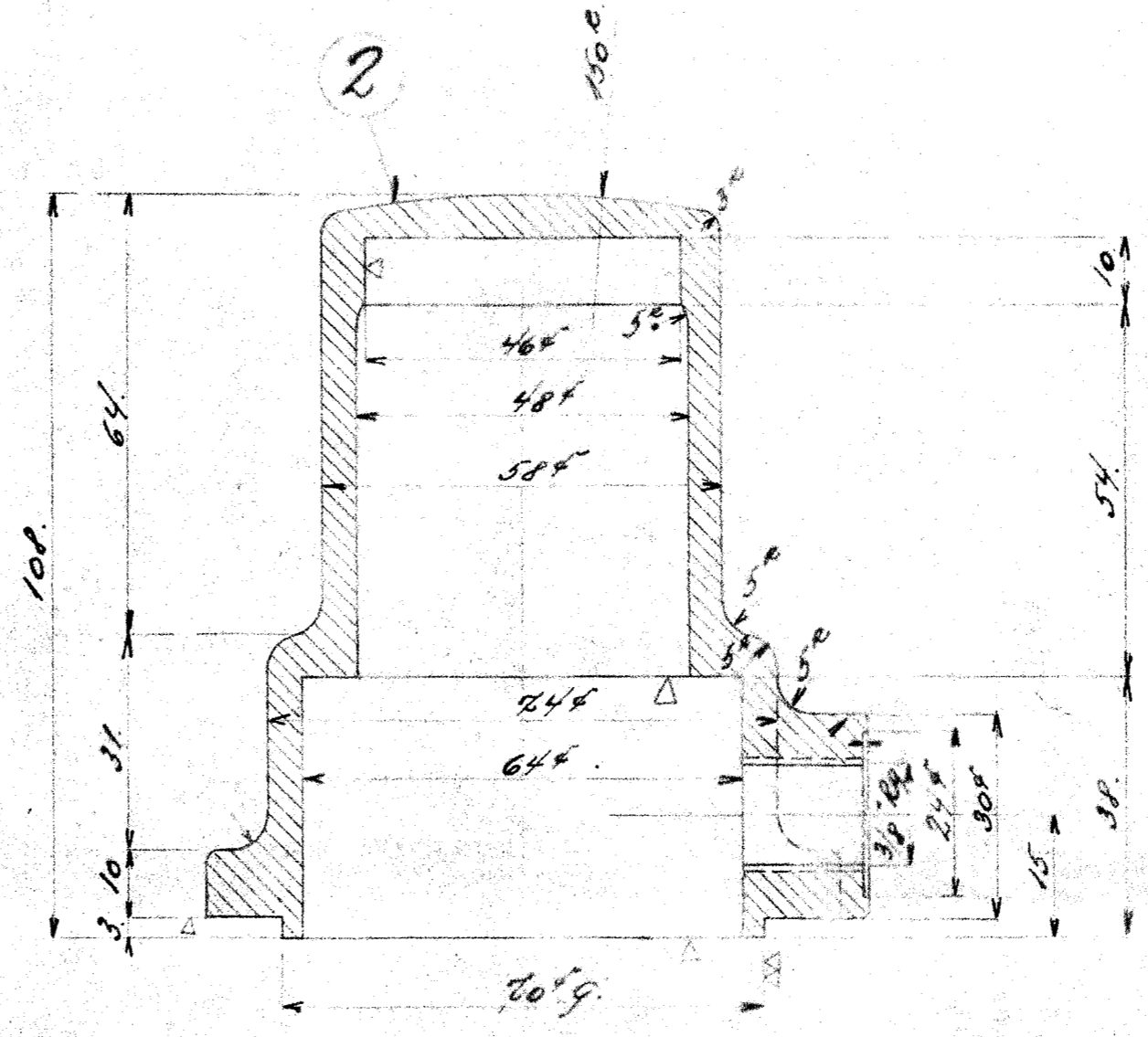
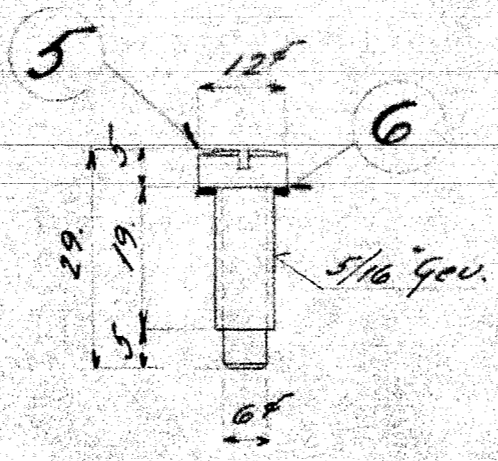
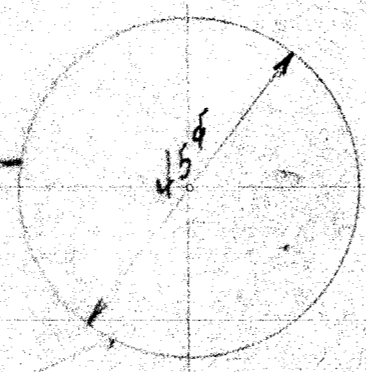


1 Ø 10 mm
 2 Ø 10 mm
 3 Ø 10 mm
 4 Ø 10 mm
 5 Ø 10 mm

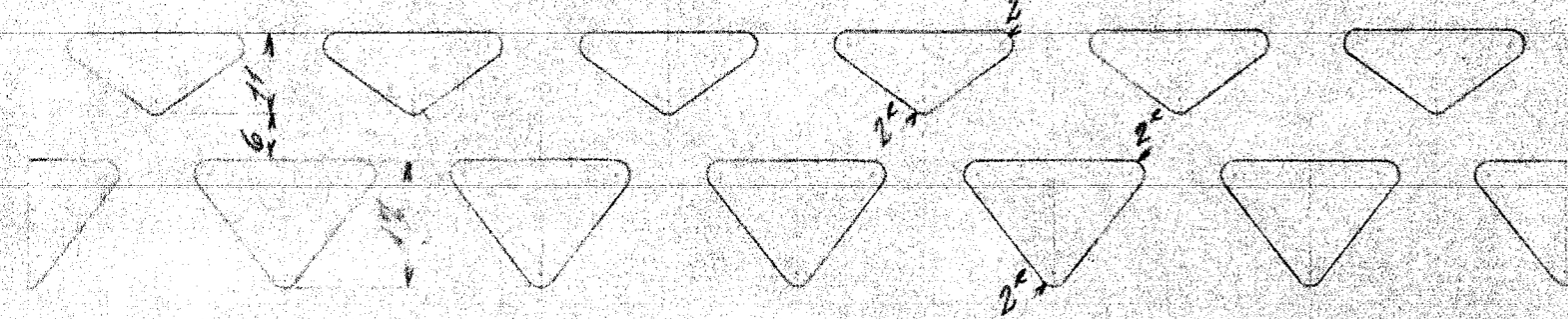
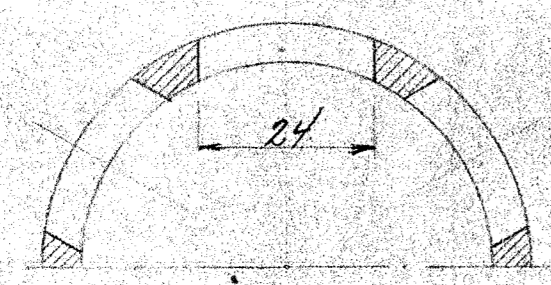
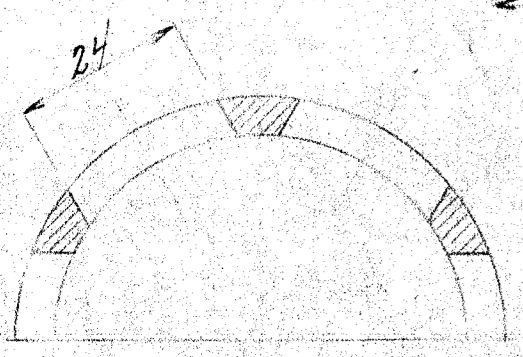
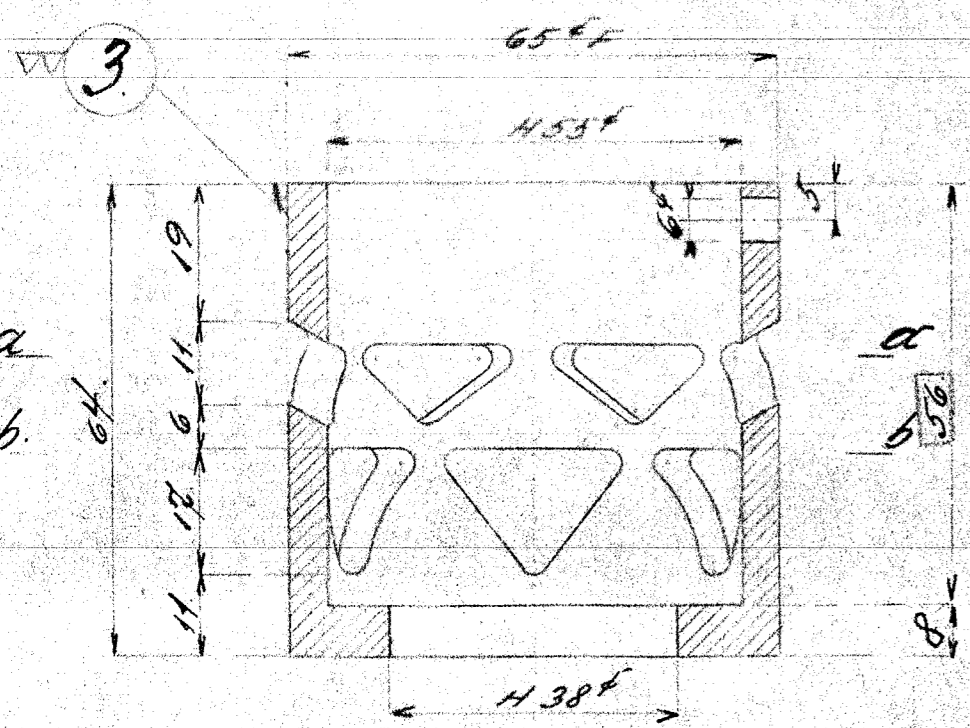
2 9
 15 3
 4 9
 2 3
 2 5 23
 4 9 4 9
 4 9

9-10-11

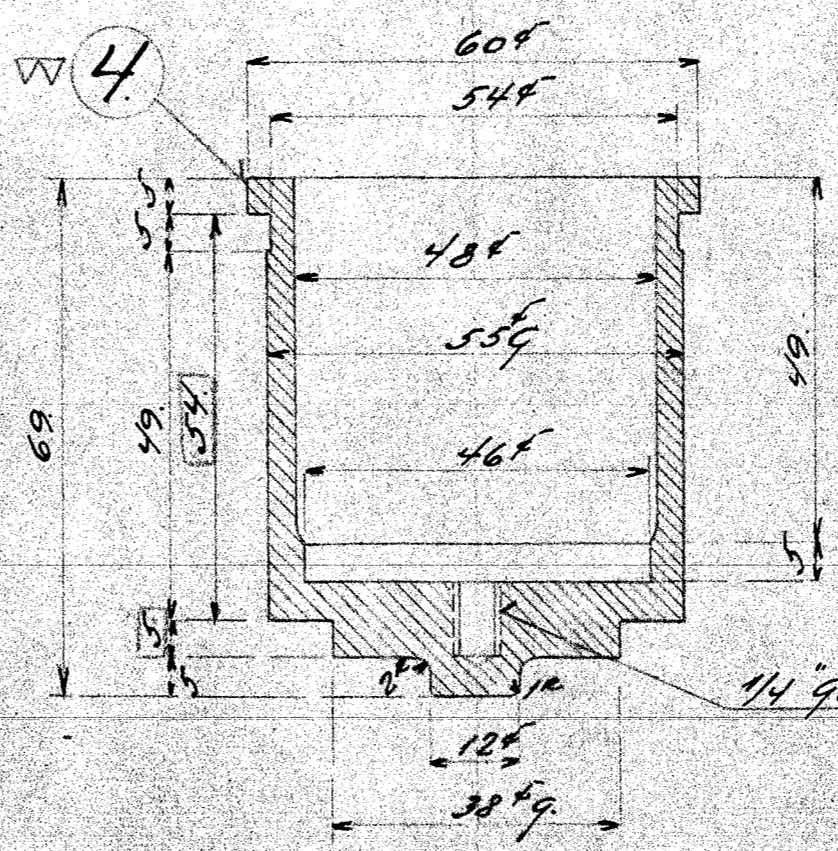
1 stk. Høllelag 2mm.
 1 " " 1mm.
 2 " " 0.5mm.



Anfærs. 20 x 0.5



Udfoldning af ydre Cyl. Hvide



1/4" gev. 10 dyb.

SÅKLISTE NO.		REVISJON	TEGNER	DATE
NO.	NO.	NO.	NO.	NO.

Såklisse Plan I.

Plan II

A/S FRICHS AARIUS
 Dieselmotor 626 C.
 Reguleringsvent for Tryk sm. led.

DRAG	1:1	626C.13 65
DATE	22-7-22	