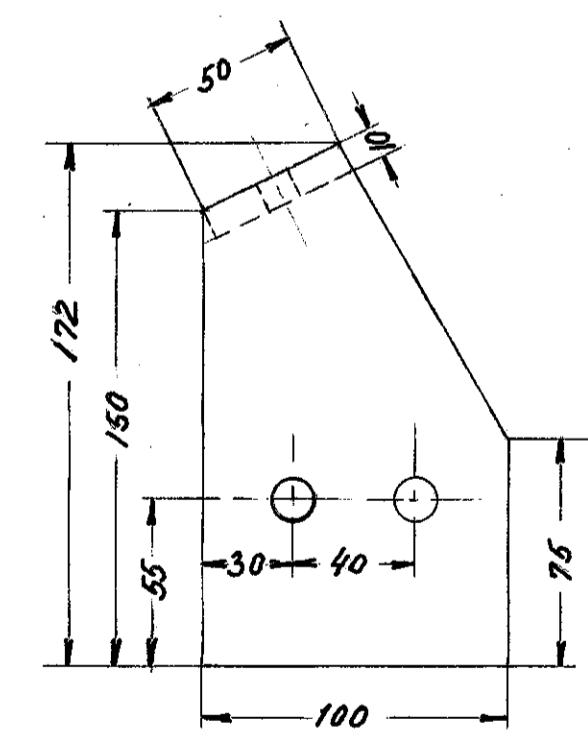
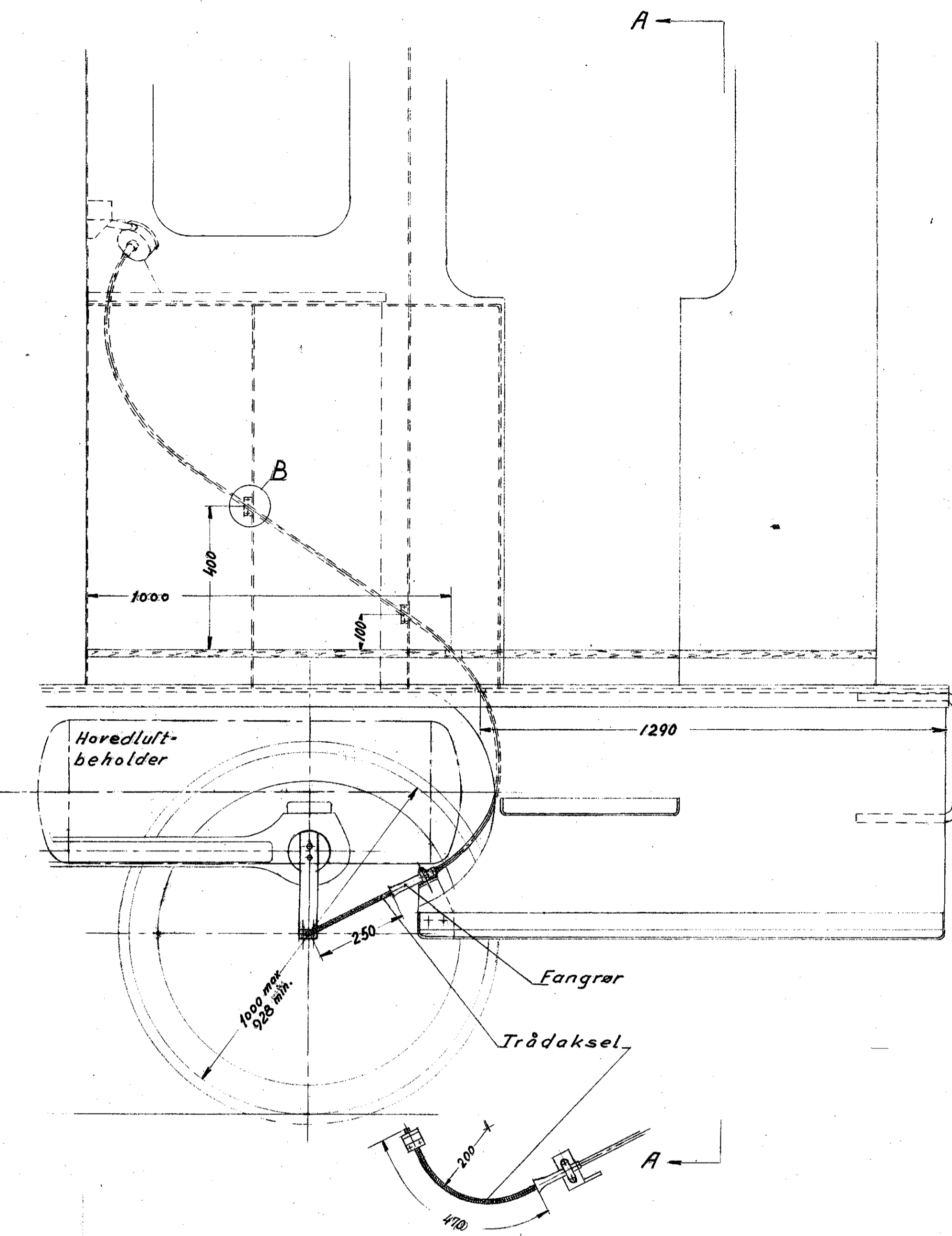
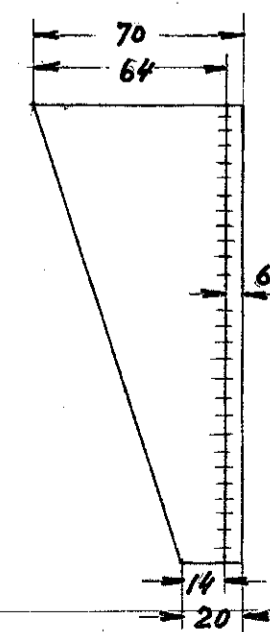
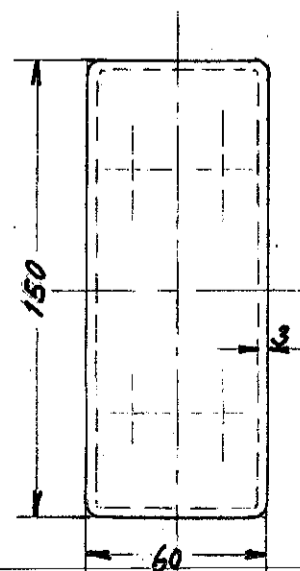
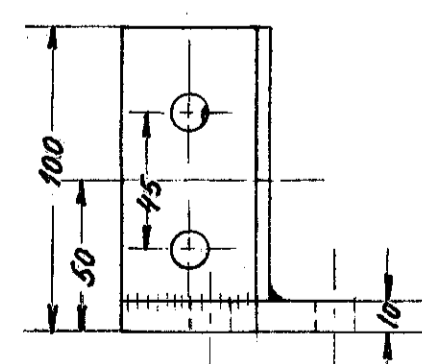
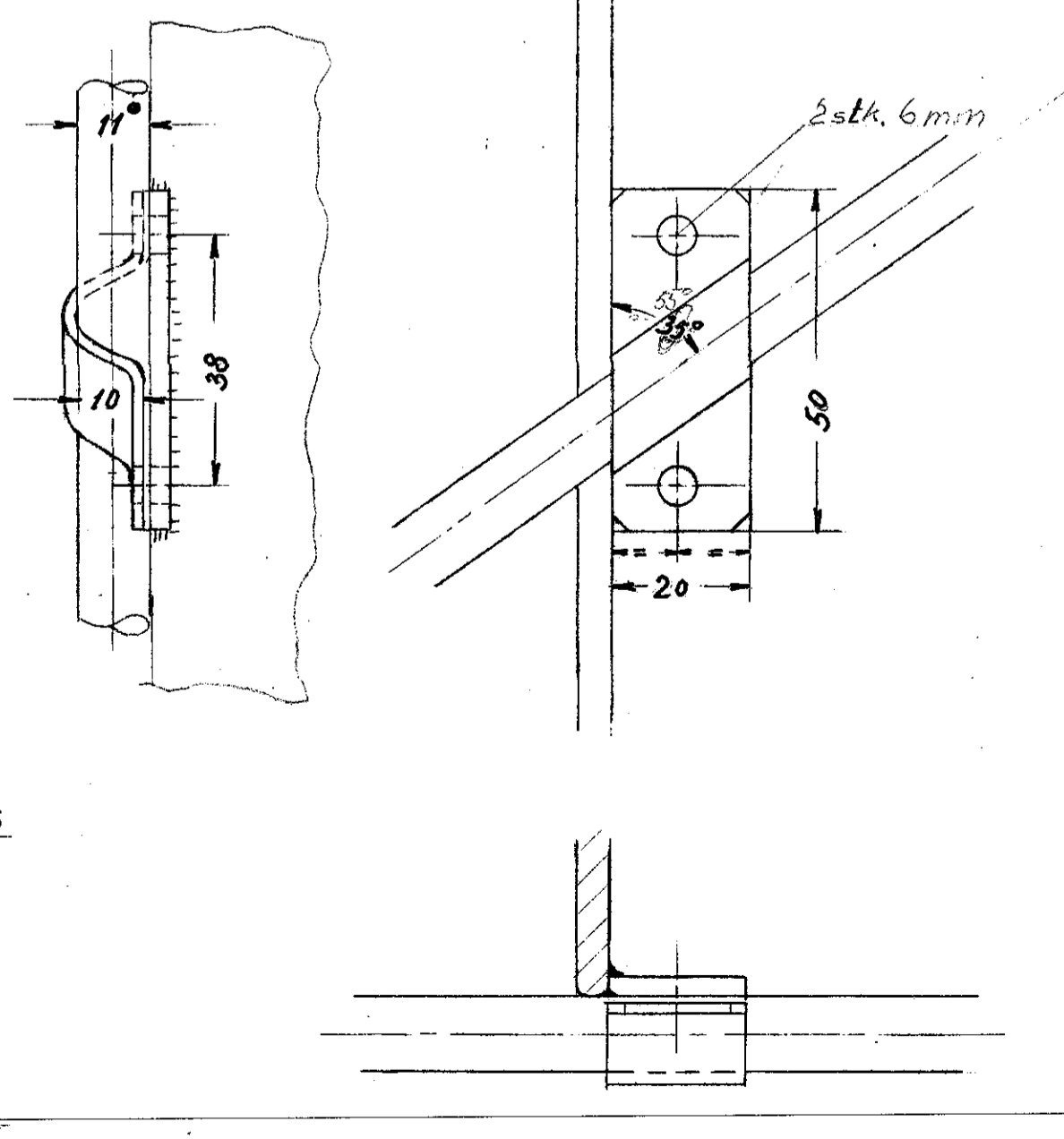


længde m. Fangrør og omløber ca. 2350

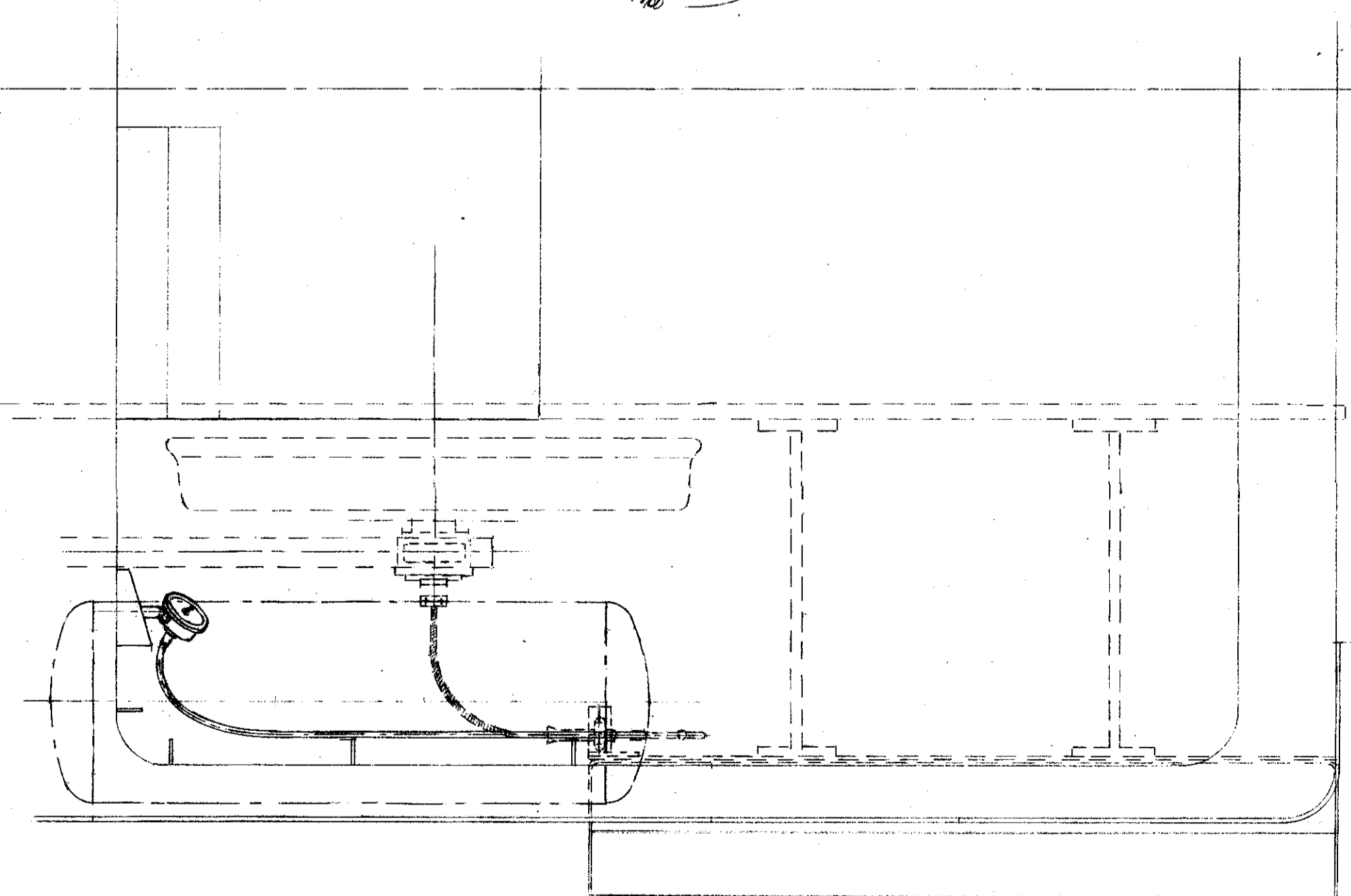
Snit A-A



detail B



L<sub>1</sub> = 2250  
L = 530



Sik.		5			
		4			
		3			
		2			
		1			
Sik.	Belegelse	Pos.	Materiale kvalitet	Model nr. eller materiale størrelse	rå færdig vægt/stk.
Tegn. Kalk.	F. S 273-54	Rev.			
		Alt.	ZL		
		Norm.			
		Dato	30.3.54		
Dato	Retelse		Indeks	Målestok: 1:10; 1:2,5;	
Anvendelse			Slyklisse nr.		
Diesel-mek.167/183hkrangertr.			9860		
Tegningens benævnelse			Tegningens nummer		
Arr. af hastighedsmåler.			304 L - 26.310		
Indeks:					