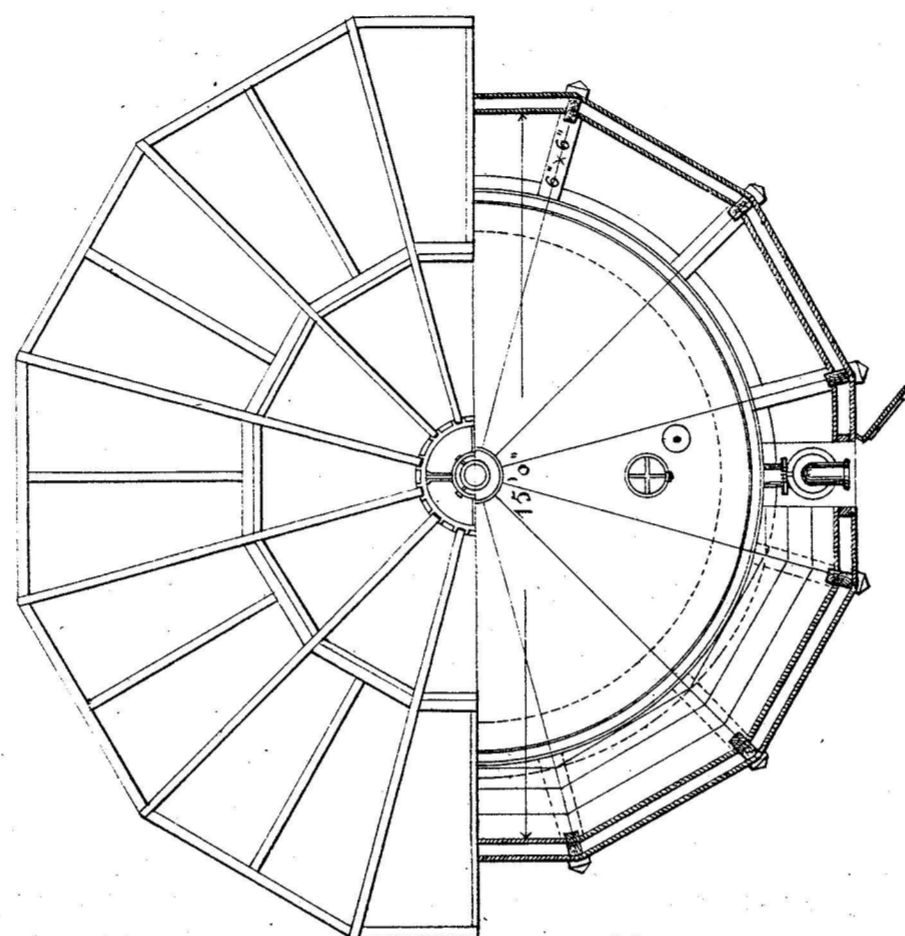
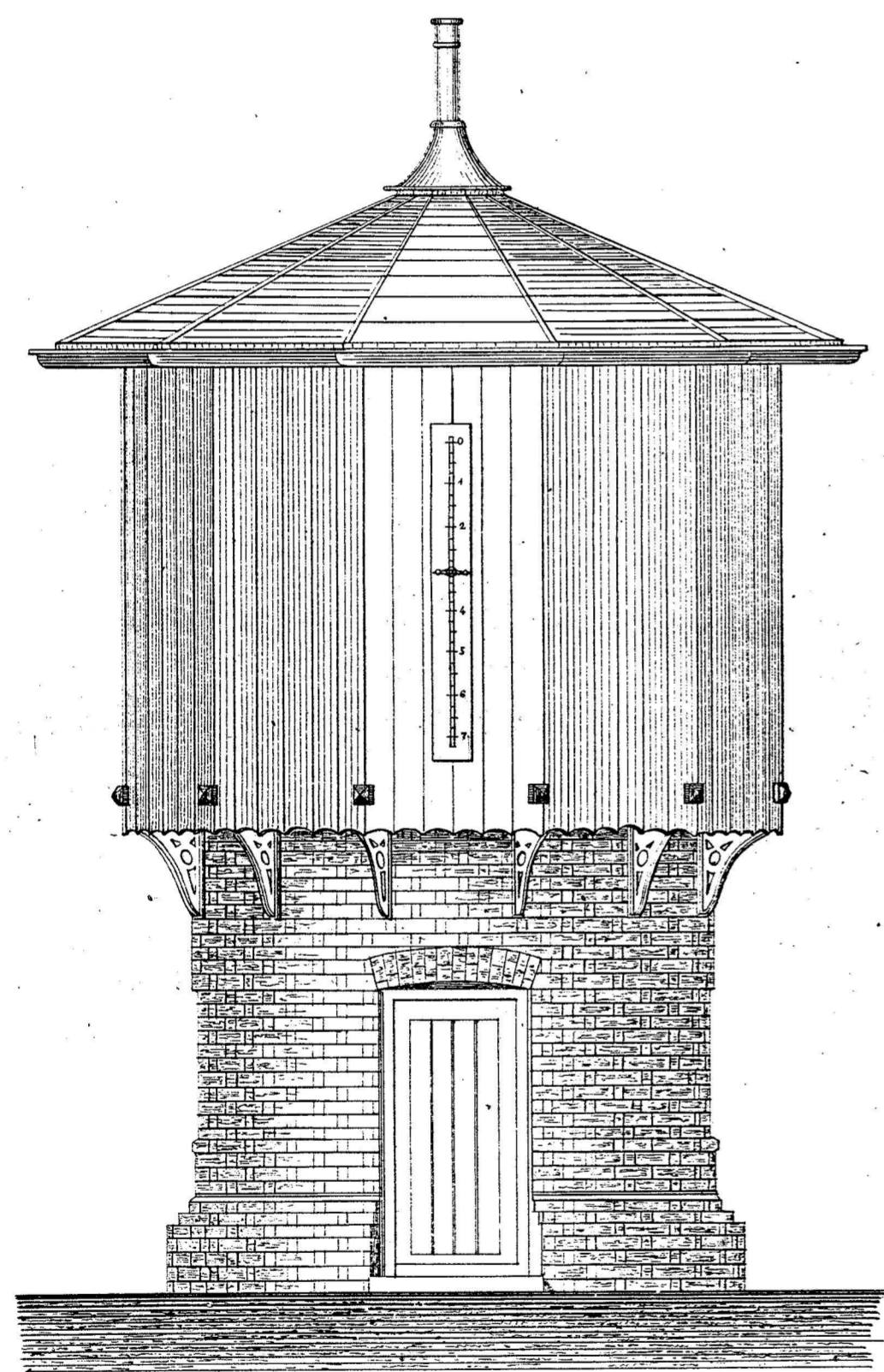
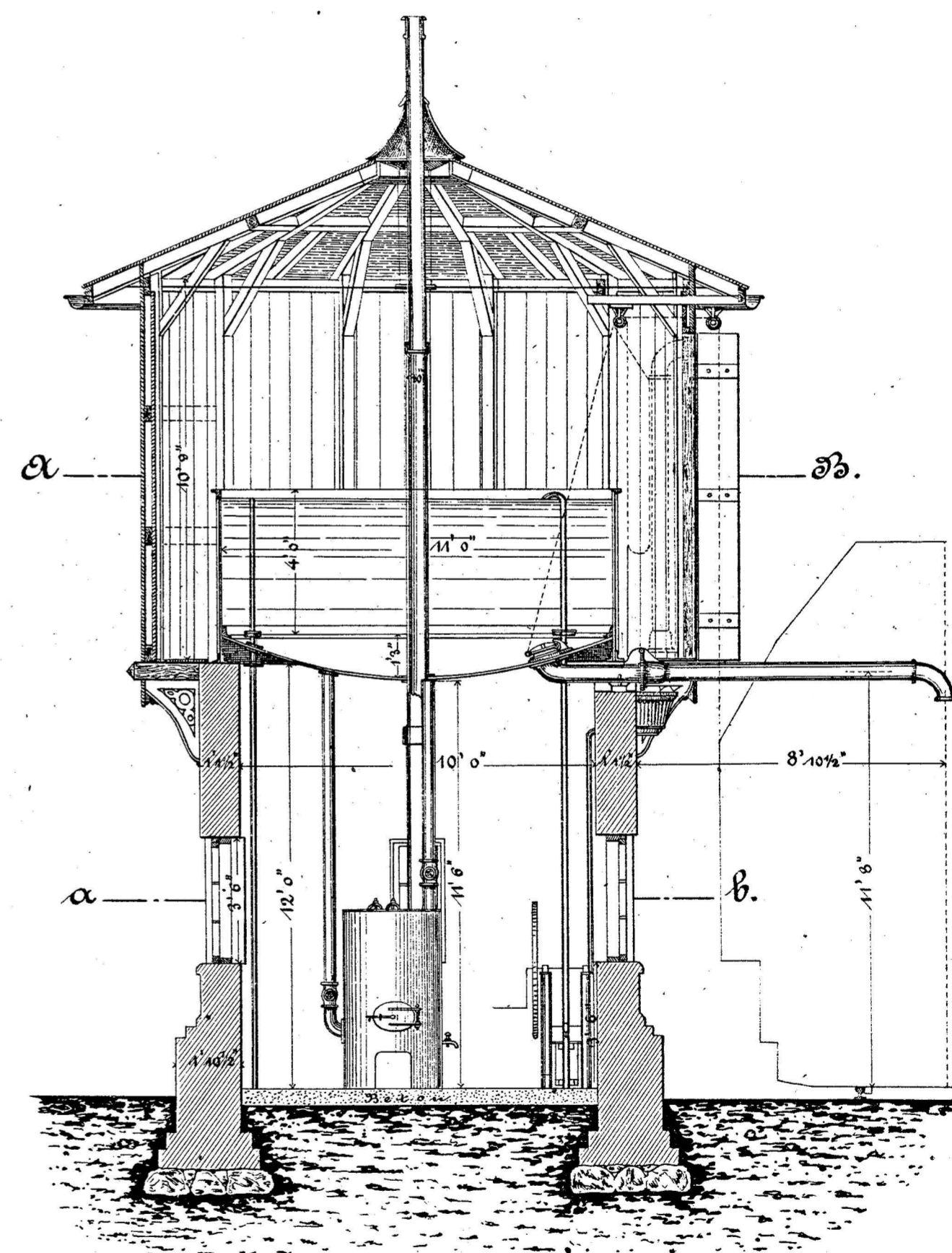
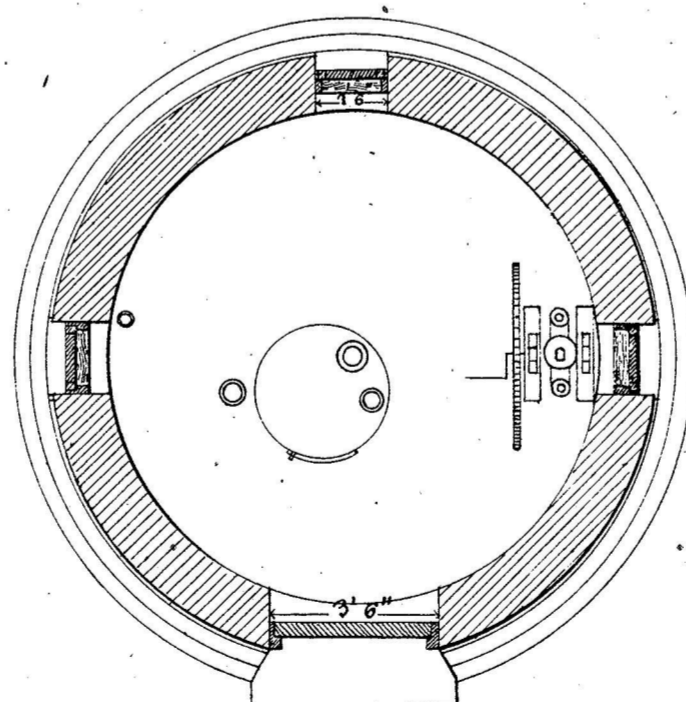


Cisternehus.

Snit A-B.



Snit a-b.



Anm.

- 1 Tagandet ledes ind i Cisternen.
- 2 Gulvet i Cisternen anbringes en Lemme og her Stige til Opgang.
- 3 Forvarmeren konstrueres efter nærmere Bestemmelse.
- 4 Der forbeholdes nærmere Bestemmelse om Funderingen.

1:48.

