

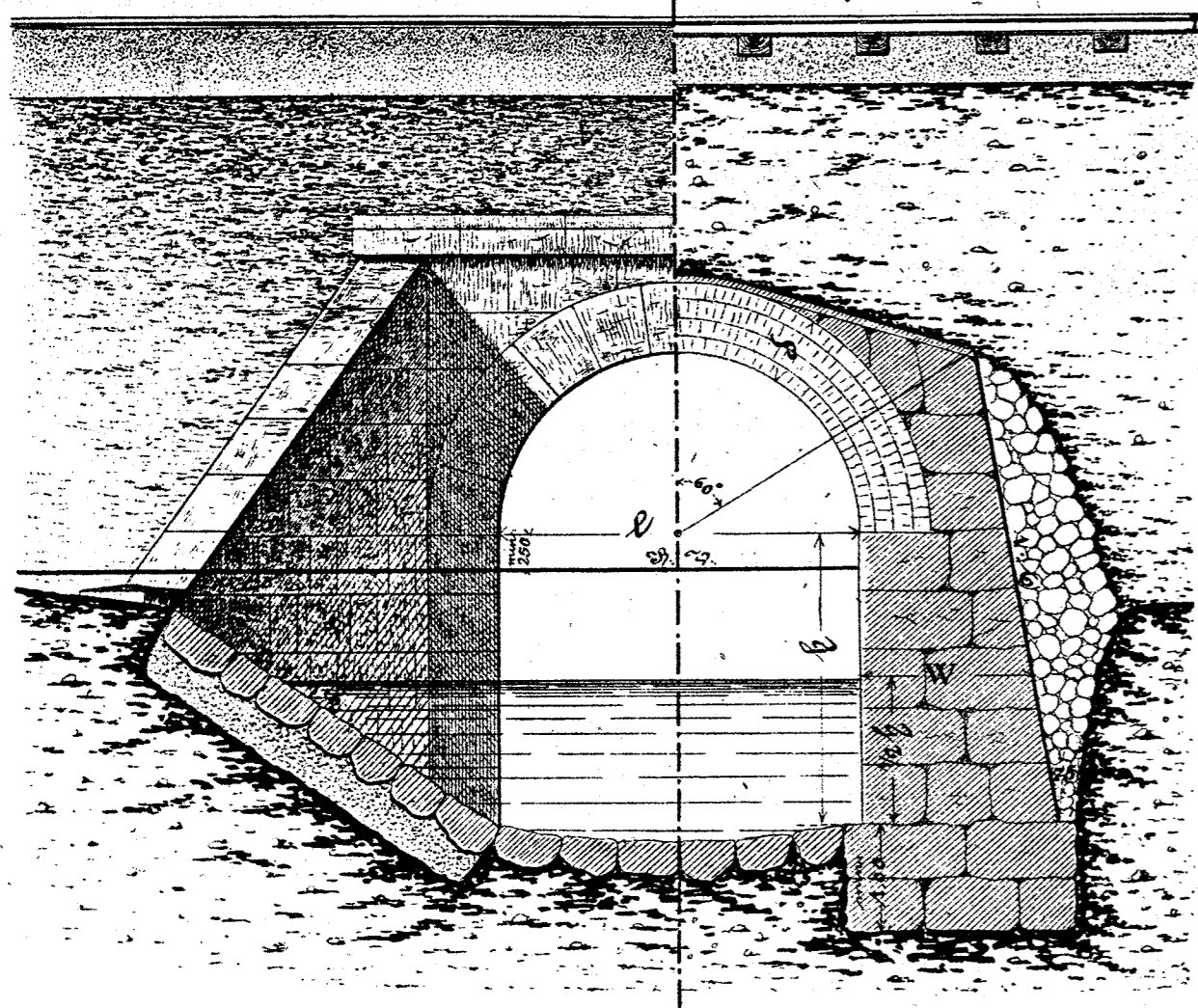
Statsbaneanlagene.

Plan 5.

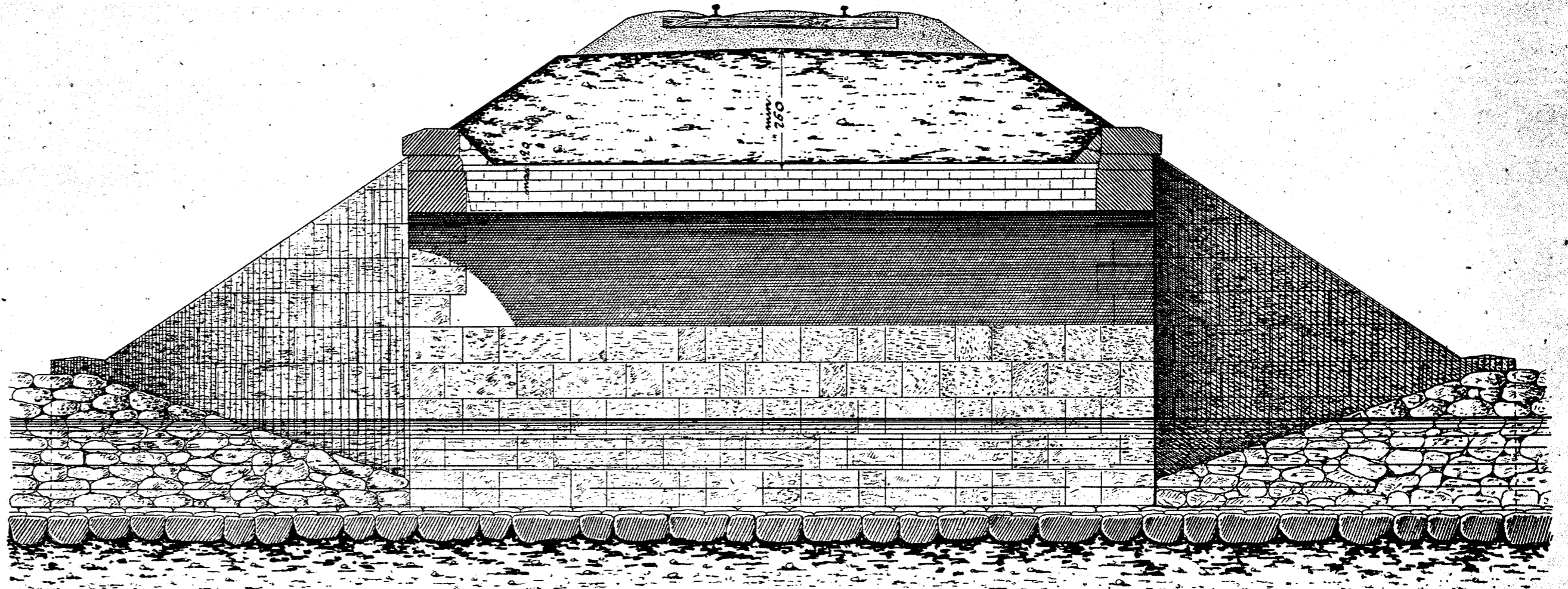
Spvalvet Bro med Halvcirkelbue.

Facade.

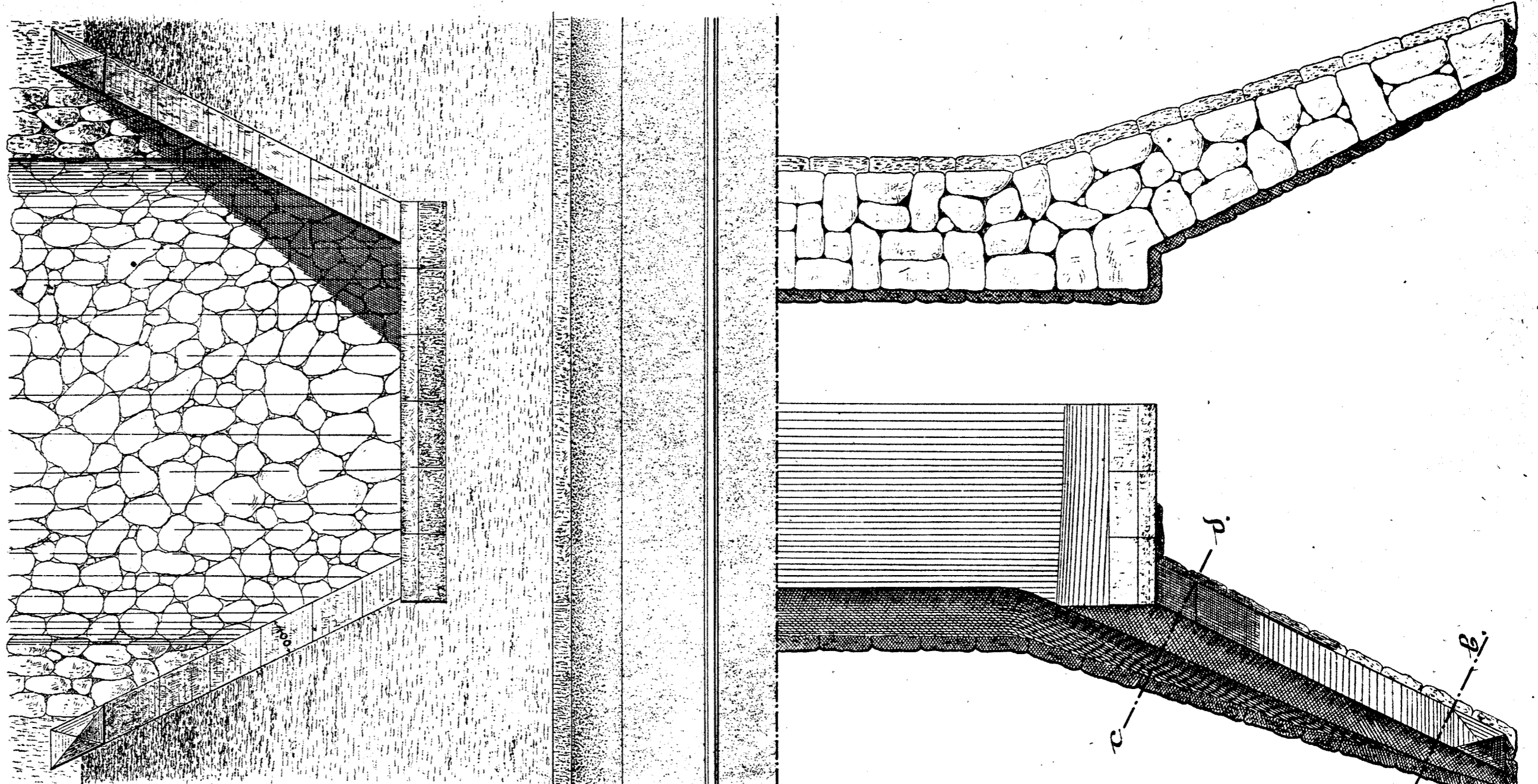
Tversnit.



Langdesnit.



Plan.



Fløimur.

Snit a-b.

Snit c-d.

l = Spandsvide i Meter.

h = Dillens Dybde δ°

W = Dillens Tykkelse δ°

d = Spvalingens Tykkelse δ°

$$d = 0,04l + 0,03.$$

$$W = 0,2l + 0,17h + 0,03.$$

Fløimurens Tykkelse for
neden = $\frac{1}{3}$ af Dybden.

Spvalingen og Dillernes Bagflader aa.
falteres.
For hver 6 Meters Dæmningshøide over
Spvalingen foresgives en Tykkelse $\frac{1}{3}$ Sten.

1:50.

1:50.

