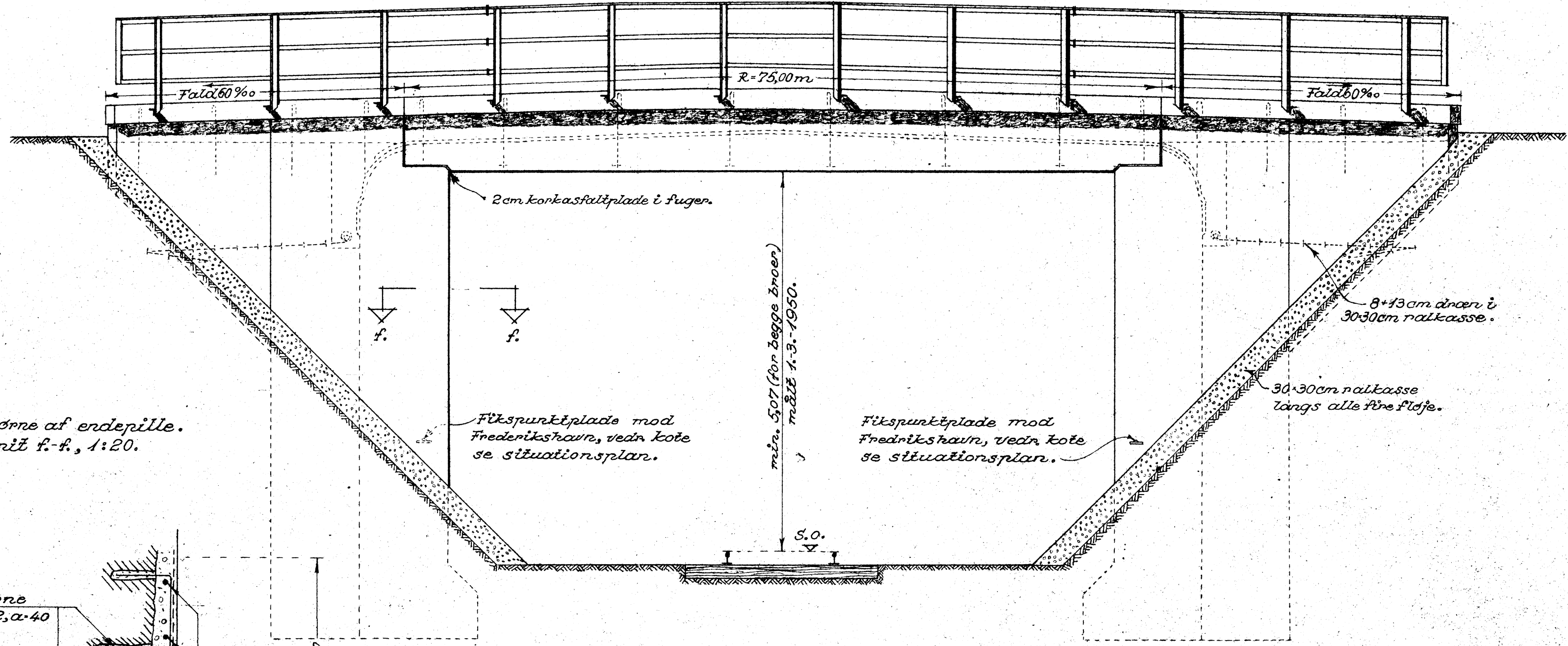
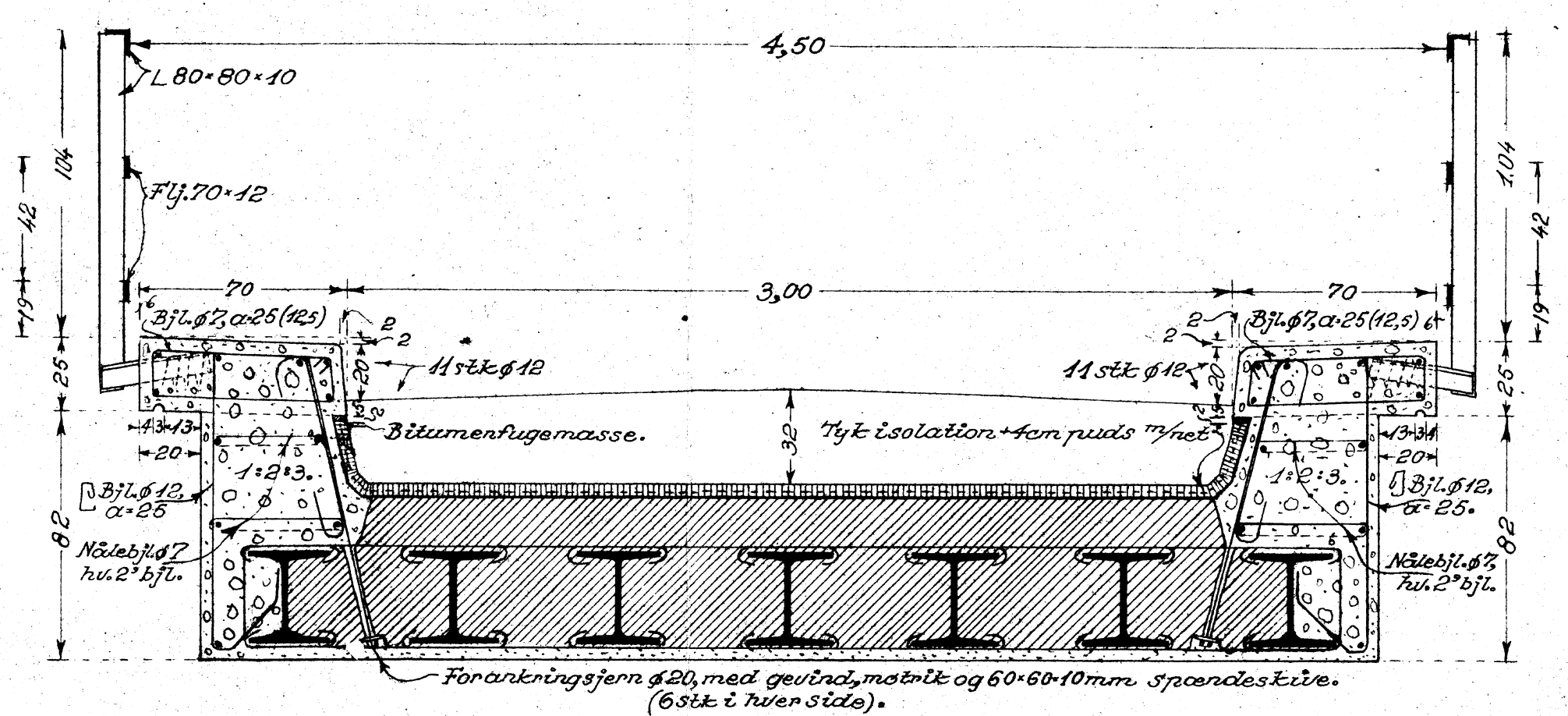


Facade, 1:50.

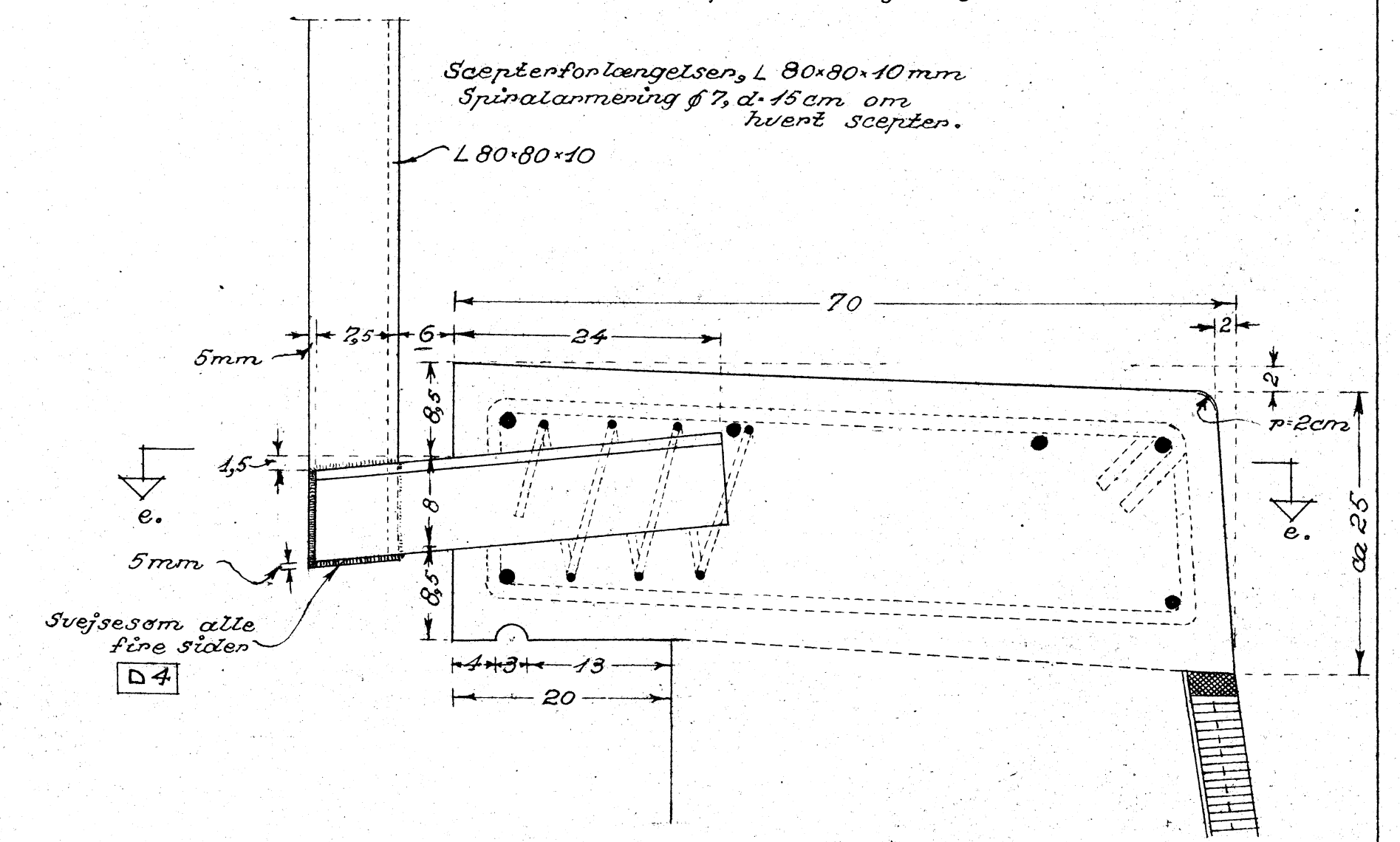
Ekst. nokvænt genanvendes, idet den udføres de viste ekspansionsled i hånd- og mellemrister samt scepterforlængelser til alle sceptre.



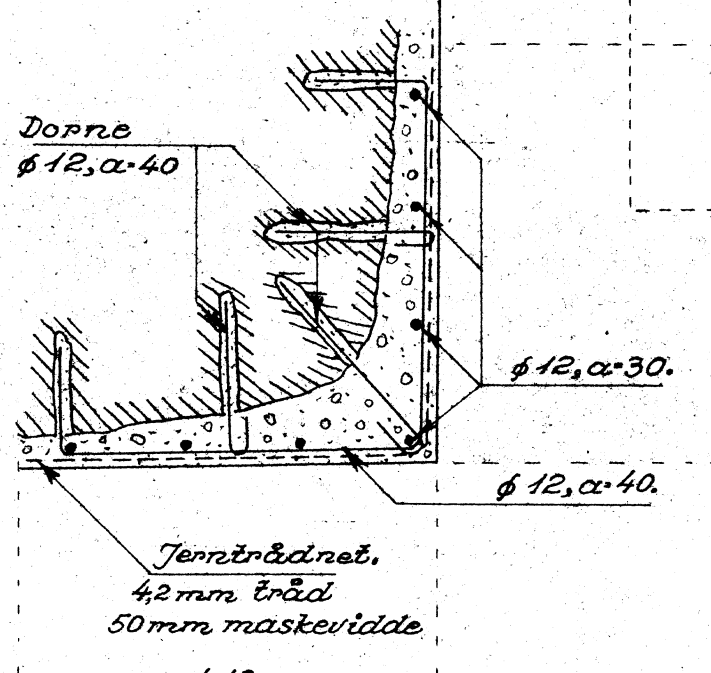
Snit A-A, 1:20.



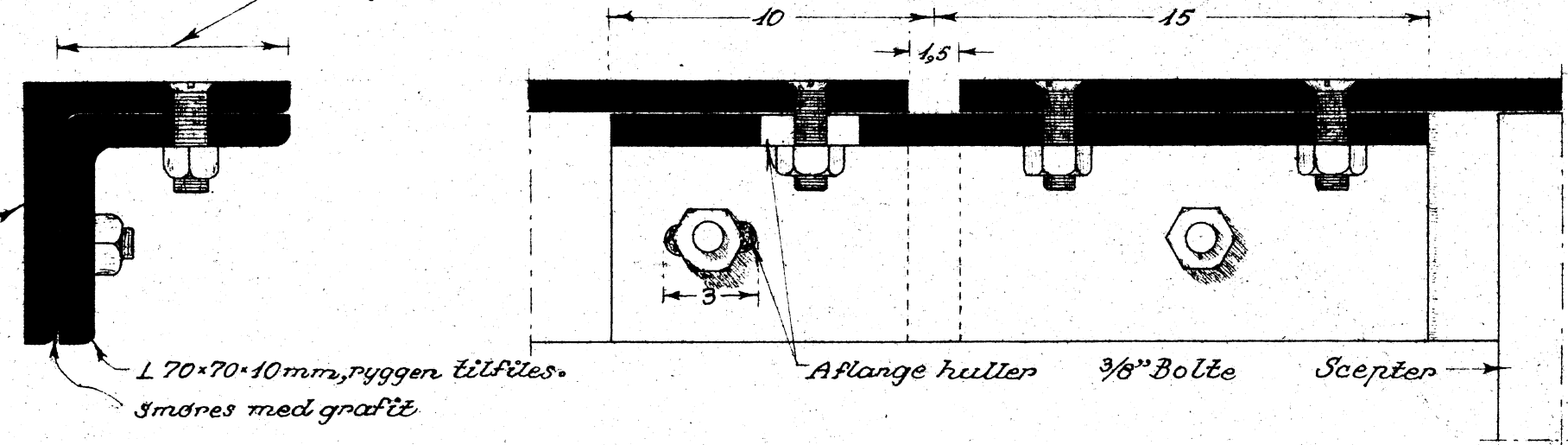
Detail af scepterforlængelse, 1:5.



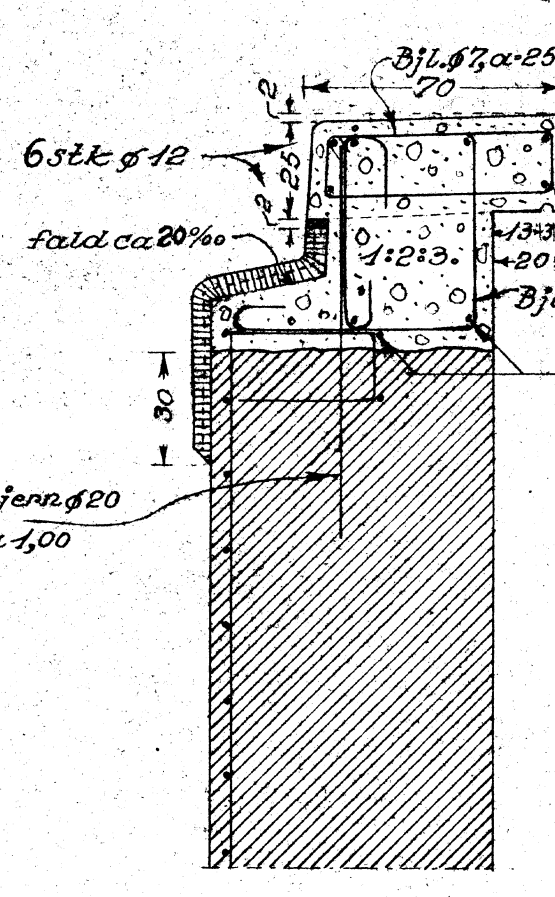
Hjørne af endepille, Snit f-f, 1:20.



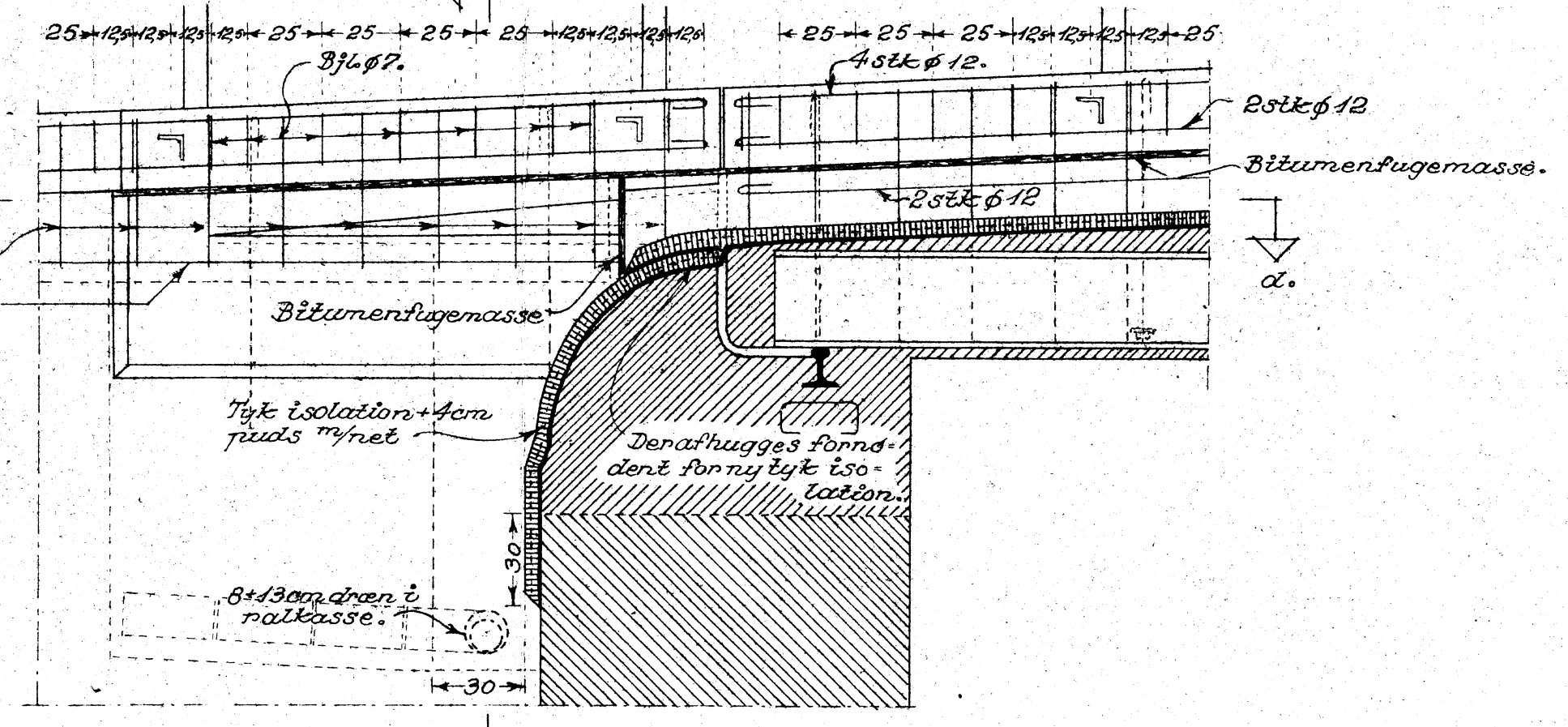
Detail af ekspansionsled i håndliste, 1:2.



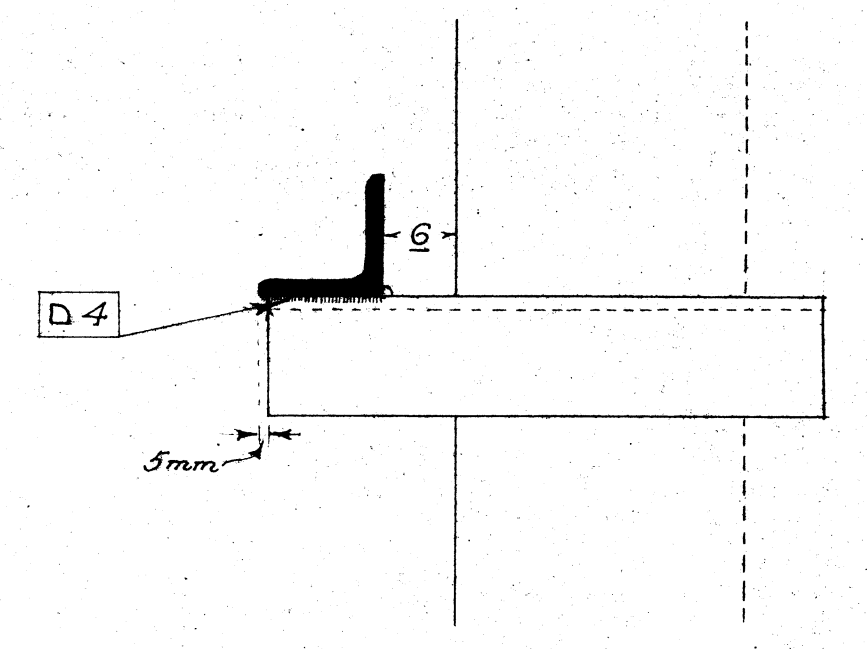
Snit c-c, 1:20.



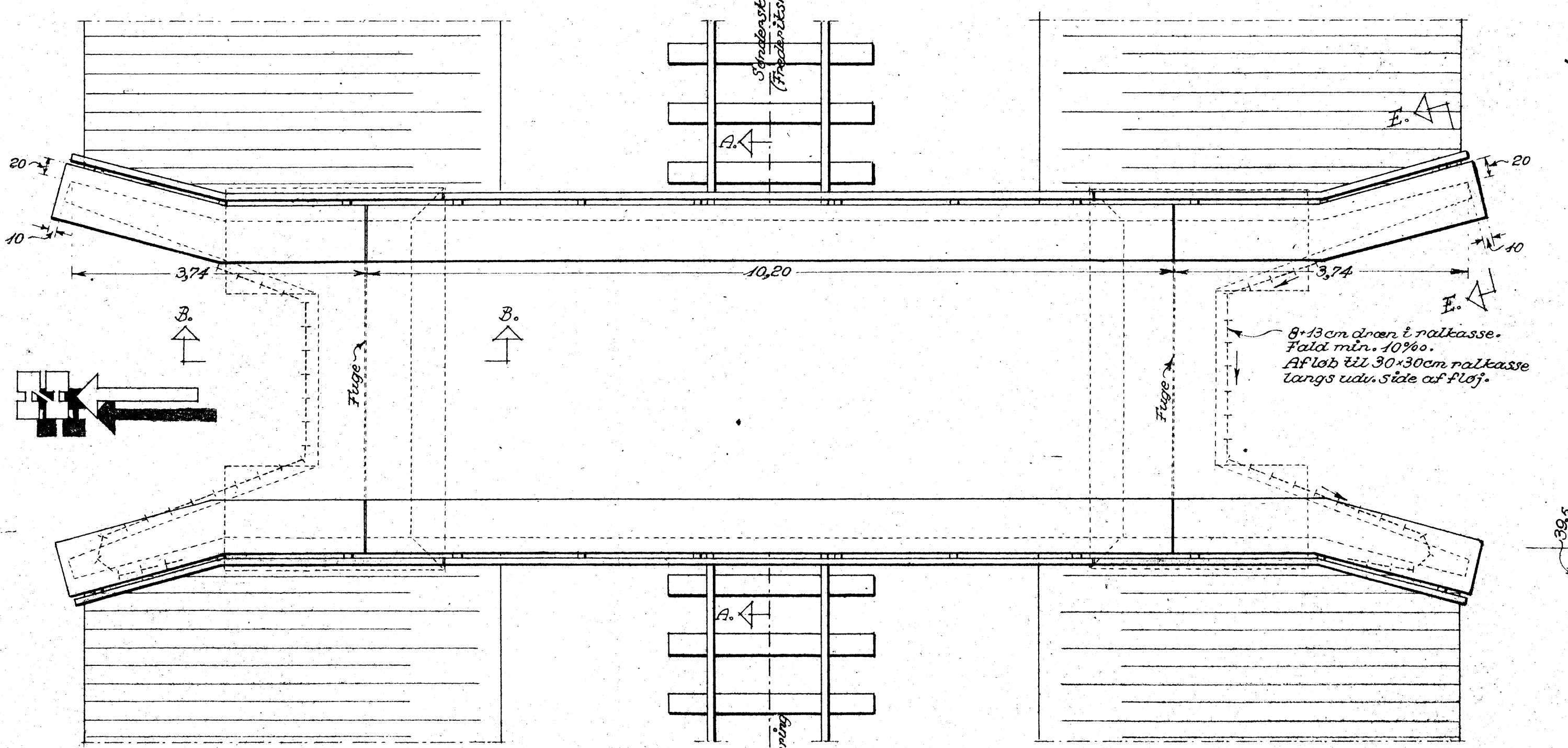
Snit B-B, 1:20.



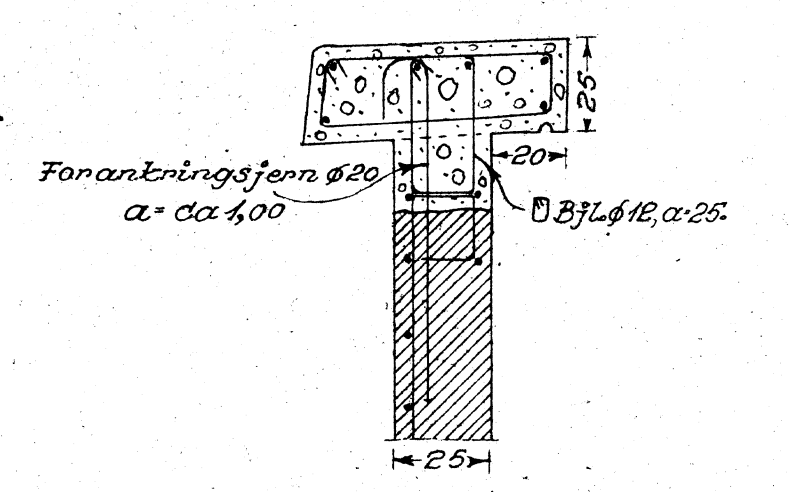
Snit e-e, 1:5.



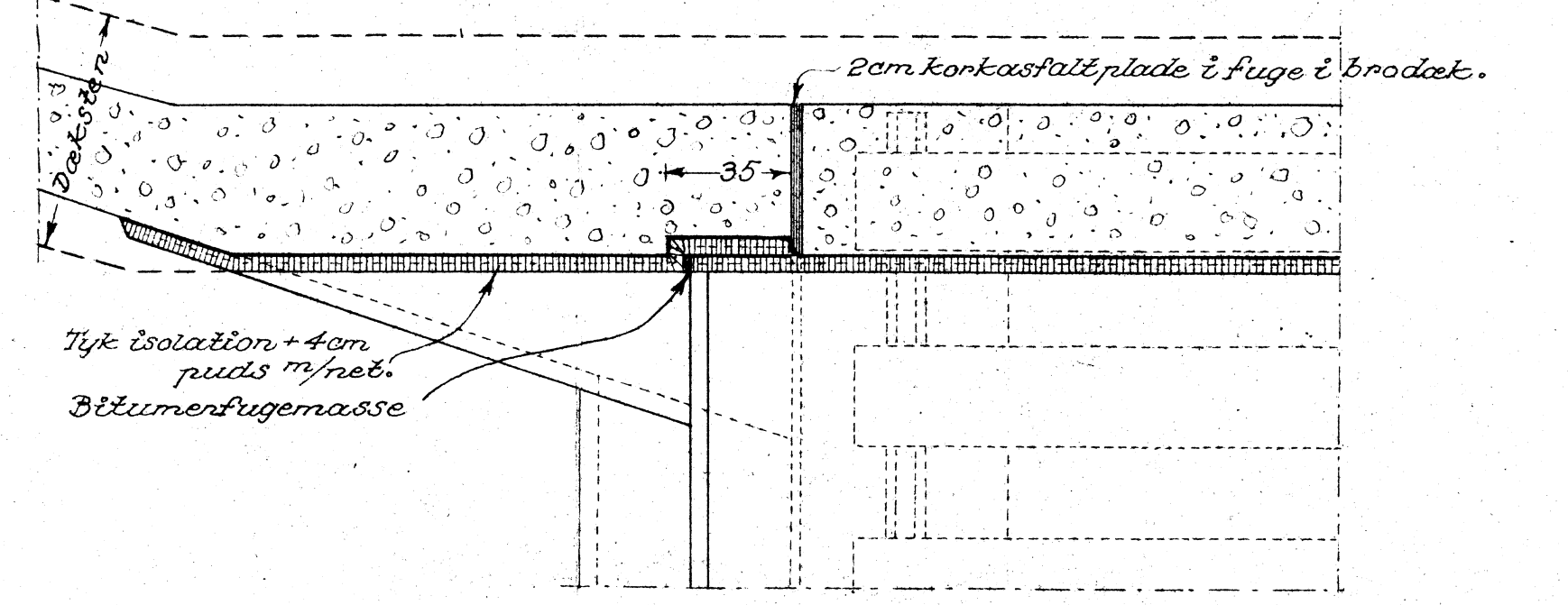
Plan, 1:50.



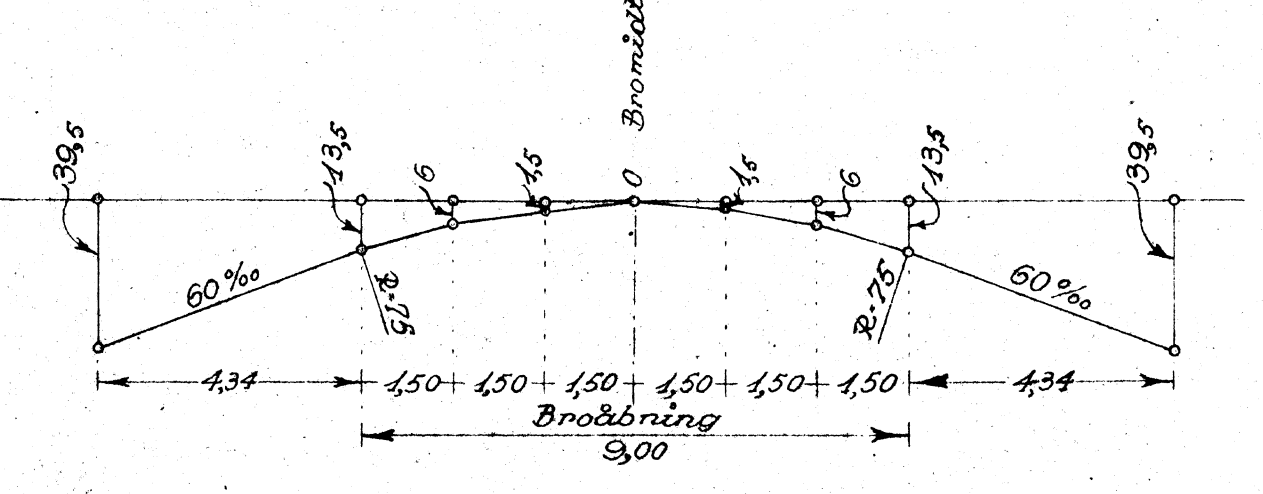
Snit E-E, 1:20.



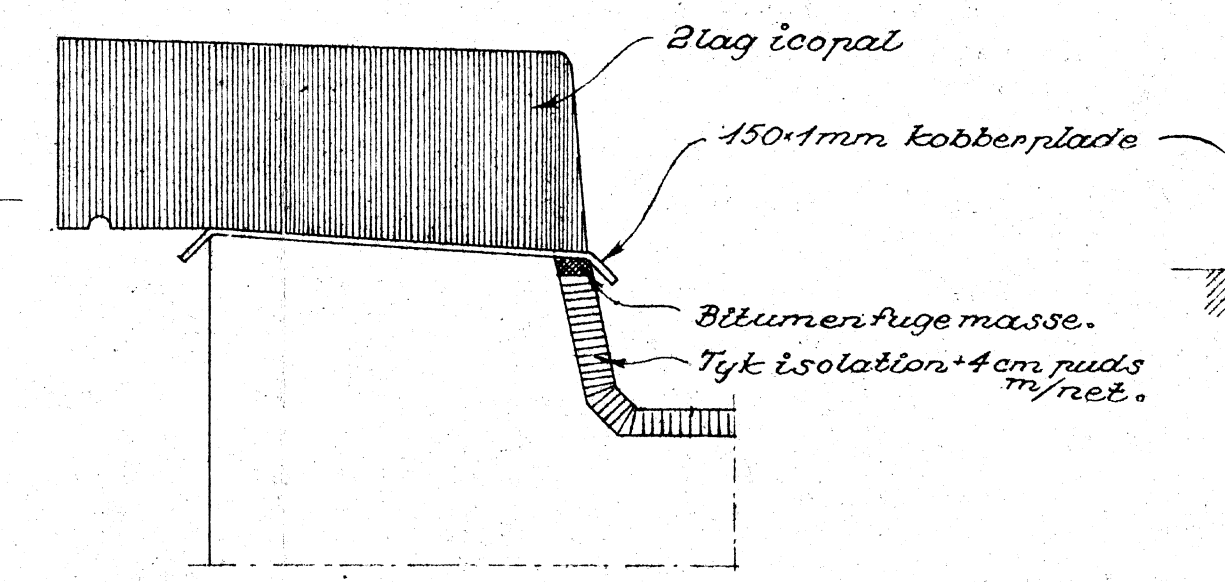
Snit d-d, 1:20.



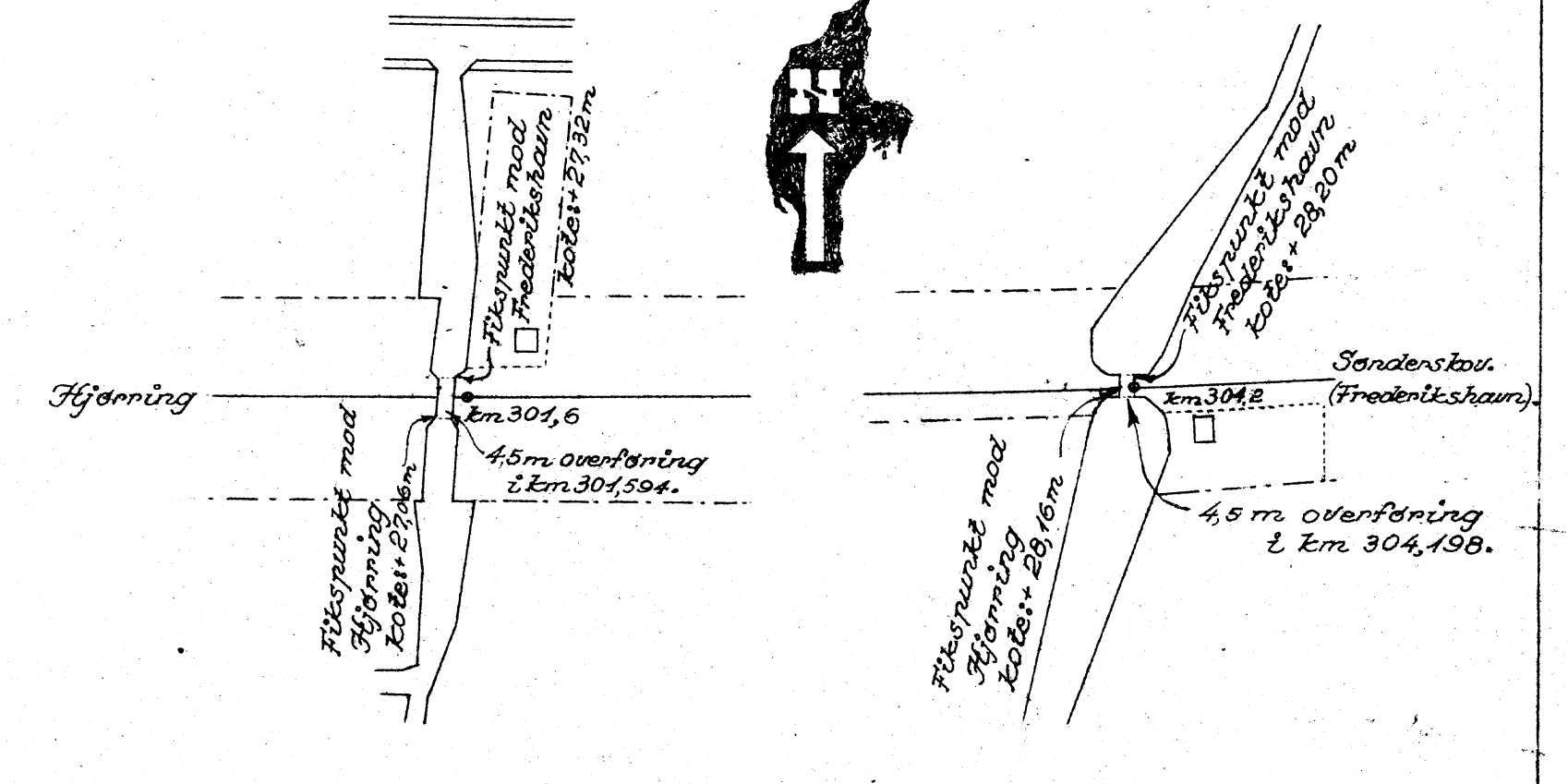
Længdeprofil af dæstern.



Snit gennem fuge i dæstern, 1:10.



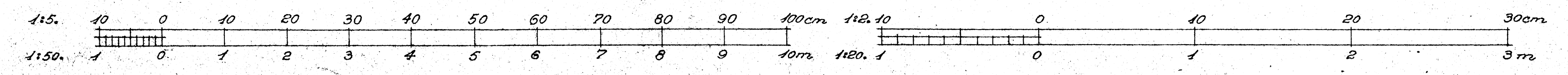
Situationsplanen, 1:2000.



28632

På alle broenes synlige overflader, med undtagelse af dæsternenes, er anbragt et lag sprøjtepuds.

Se endvidere plan nr. 12852.



Danske Statsbaner
Baneafdelingen - 1. Banekontor
Hjørring-Sanderskov, km 304,594.

4,5 m Overføring.
Istandsættelse og udvidelse fra 4,0-4,5 m
Konstn. K.H.
Tegnet af d. 9/6 1949
Kontrollert af K.T. Lassen
Rev. a, d. 4-4-50
20 278 a