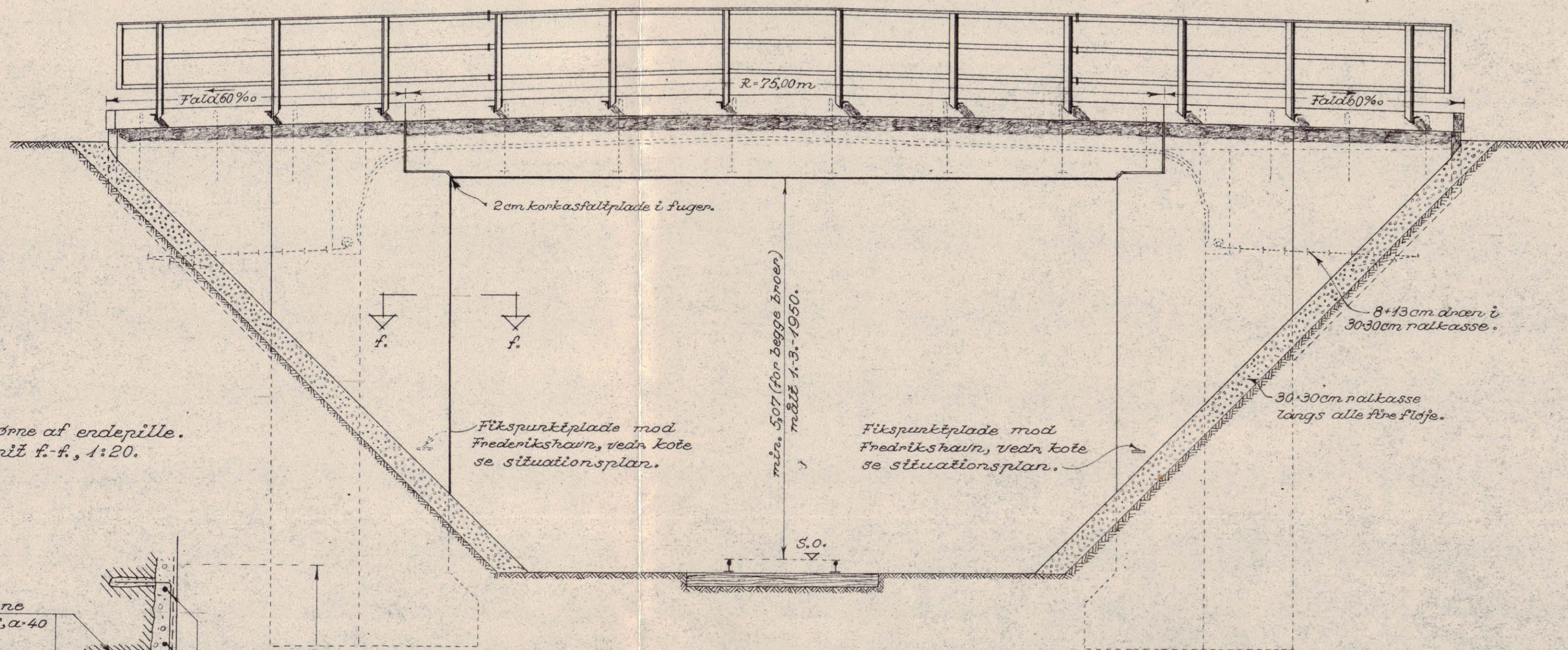
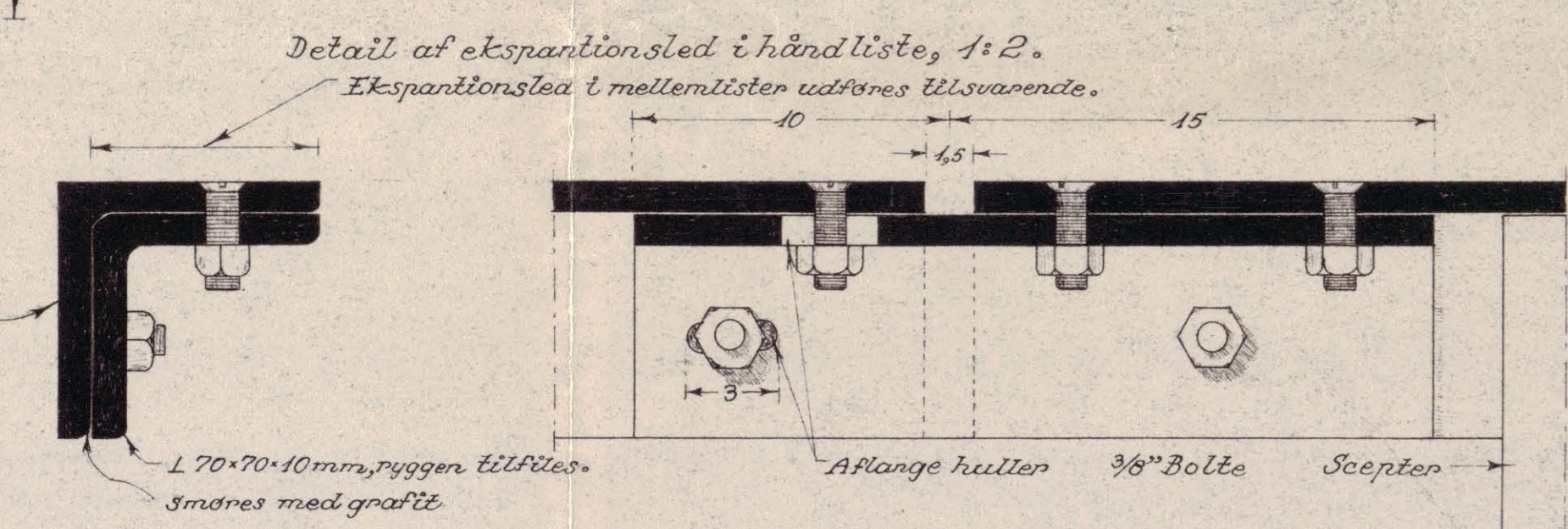
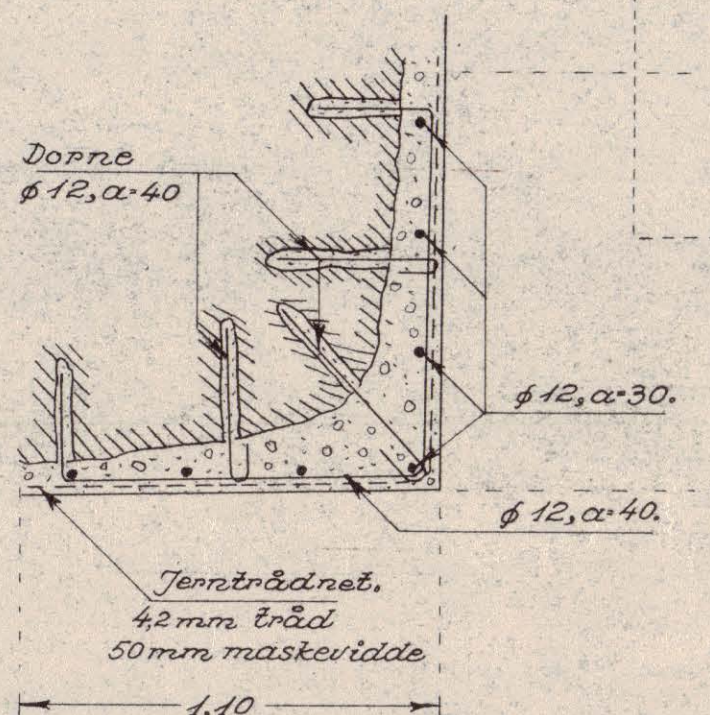


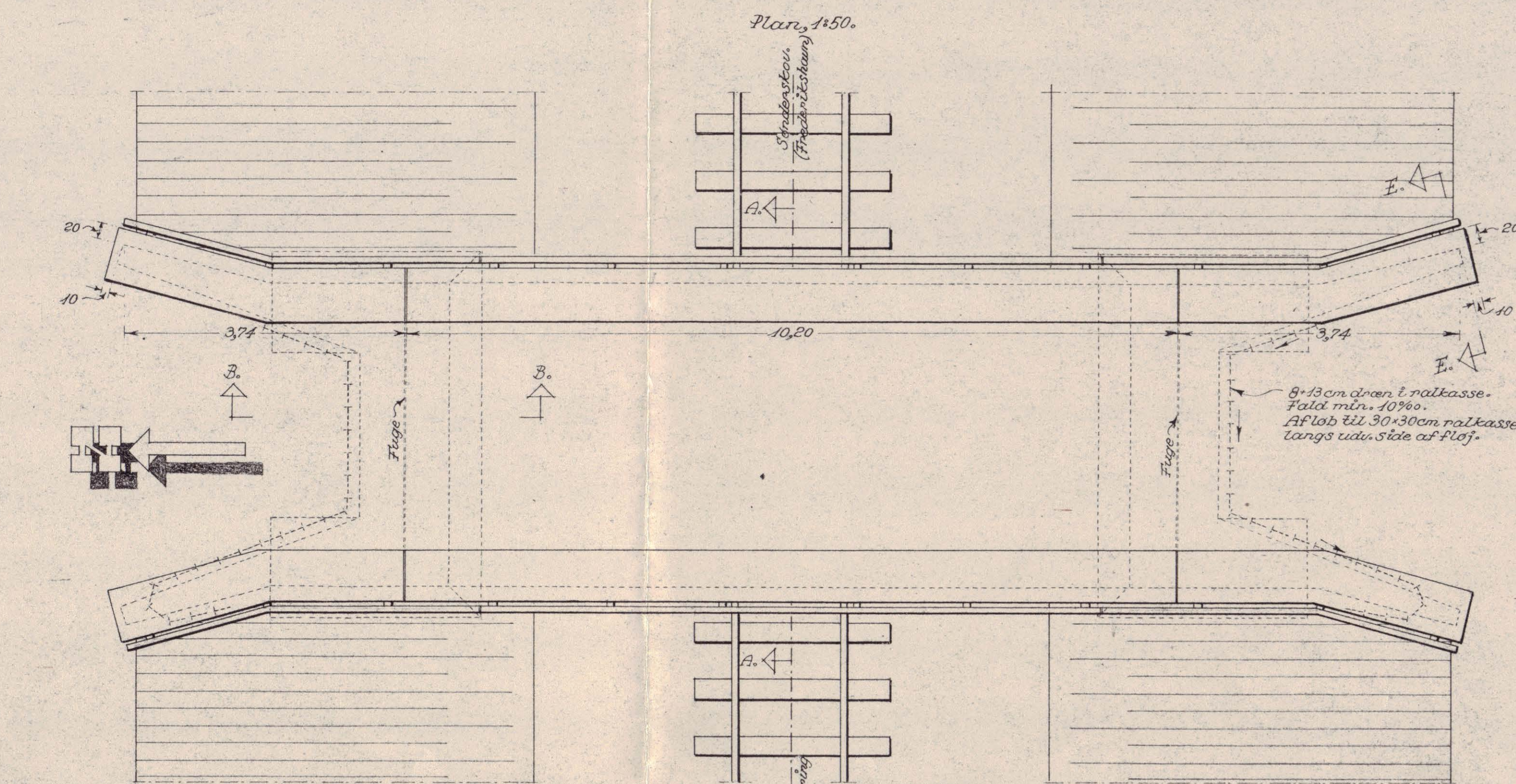
Facade, 1:50.
 Eksist. røkværk genanvendes, så det udføres de viste ekspansionsled i hånd- og mellemstøtten samt sceptenforlængelsen til alle sceptre.



Hjørne af endepille.
 Snit A-A, 1:20.

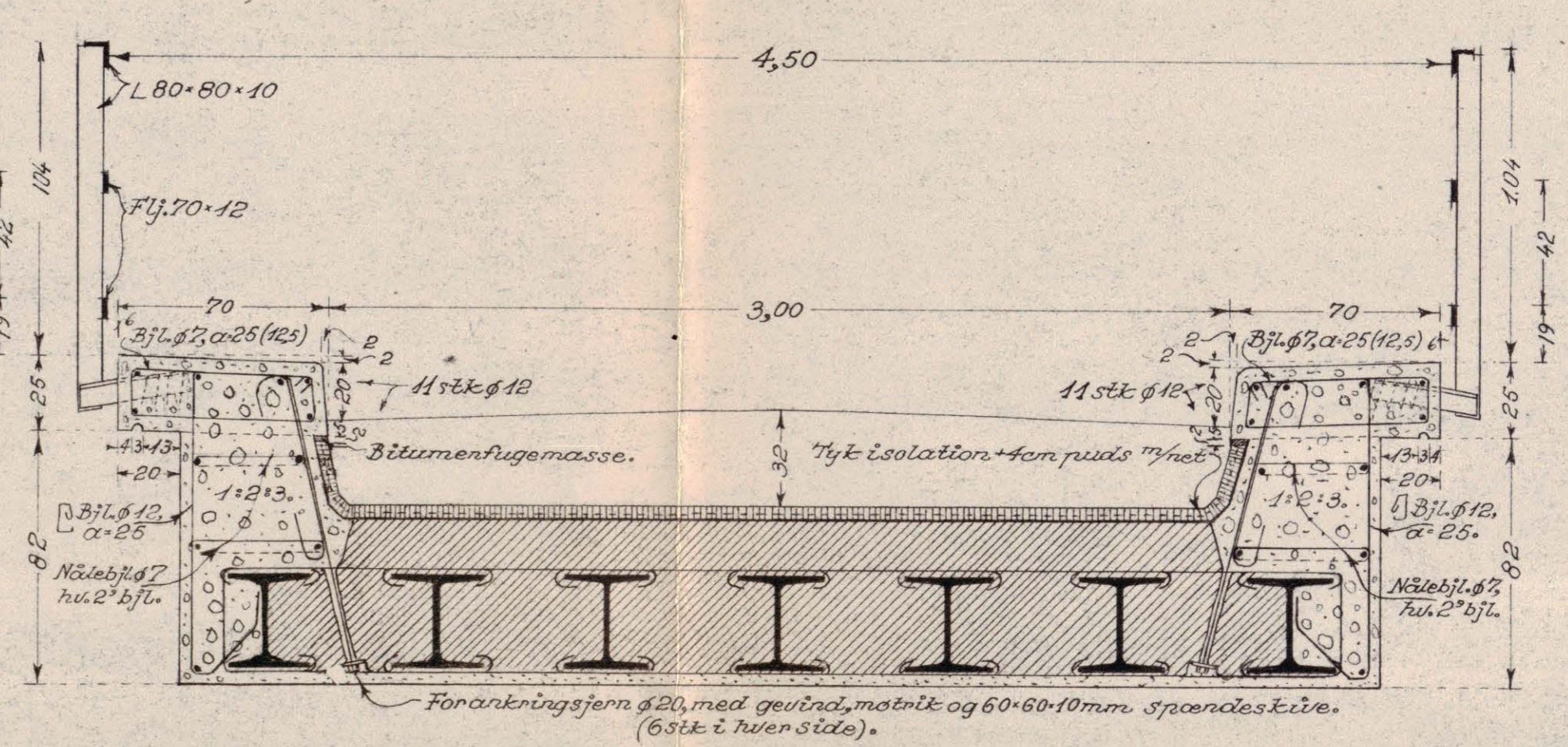


Detail af ekspansionsled i håndliste, 1:2.
 Ekspansionsled i mellemstøtten udføres tilsvarende.

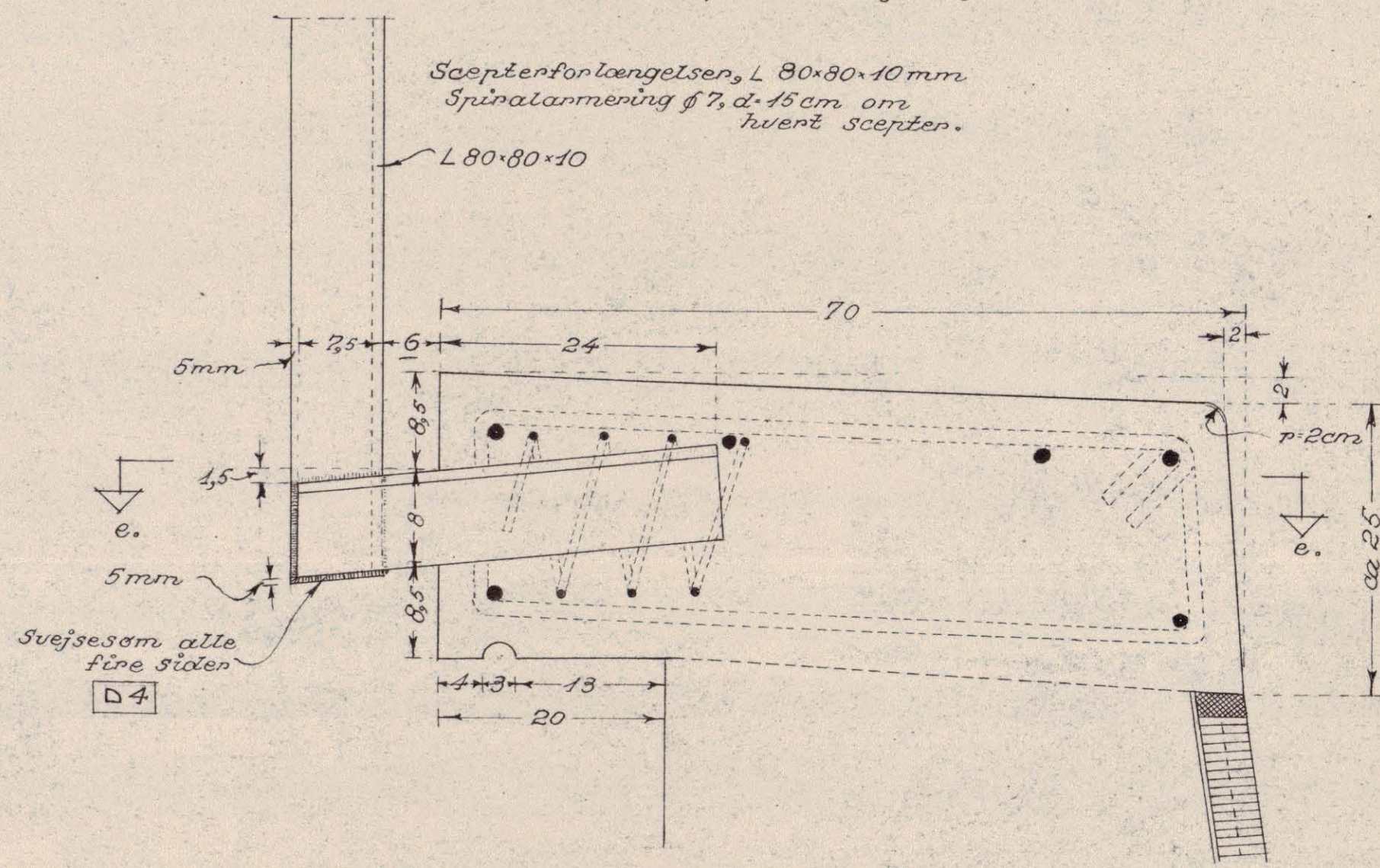


På alle broenes synlige overflader, med undtagelse af dækstenenes, anbragt et lag sprøjtepudd.

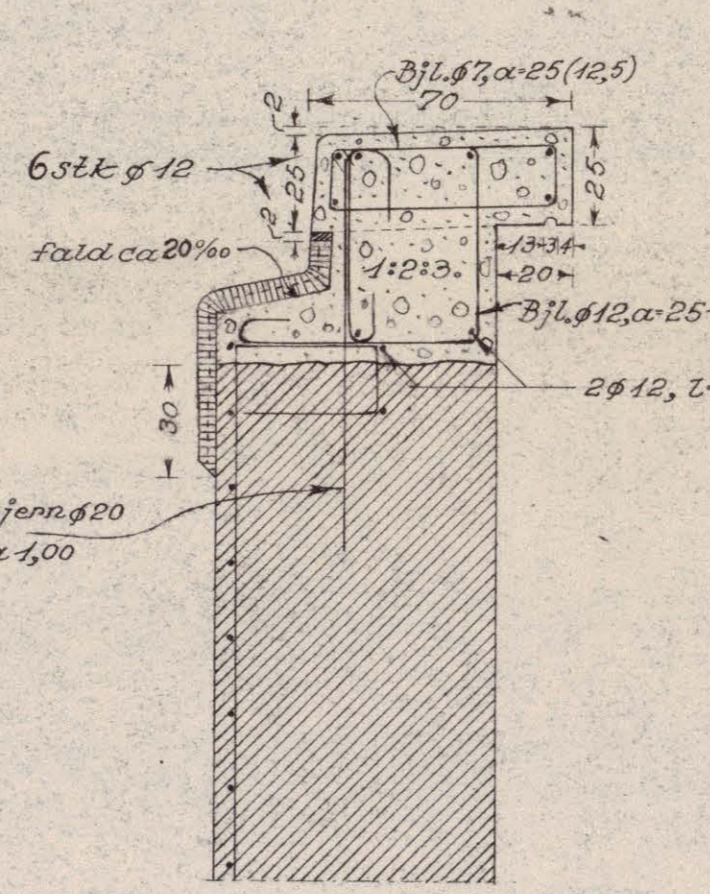
Snit A-A, 1:20.



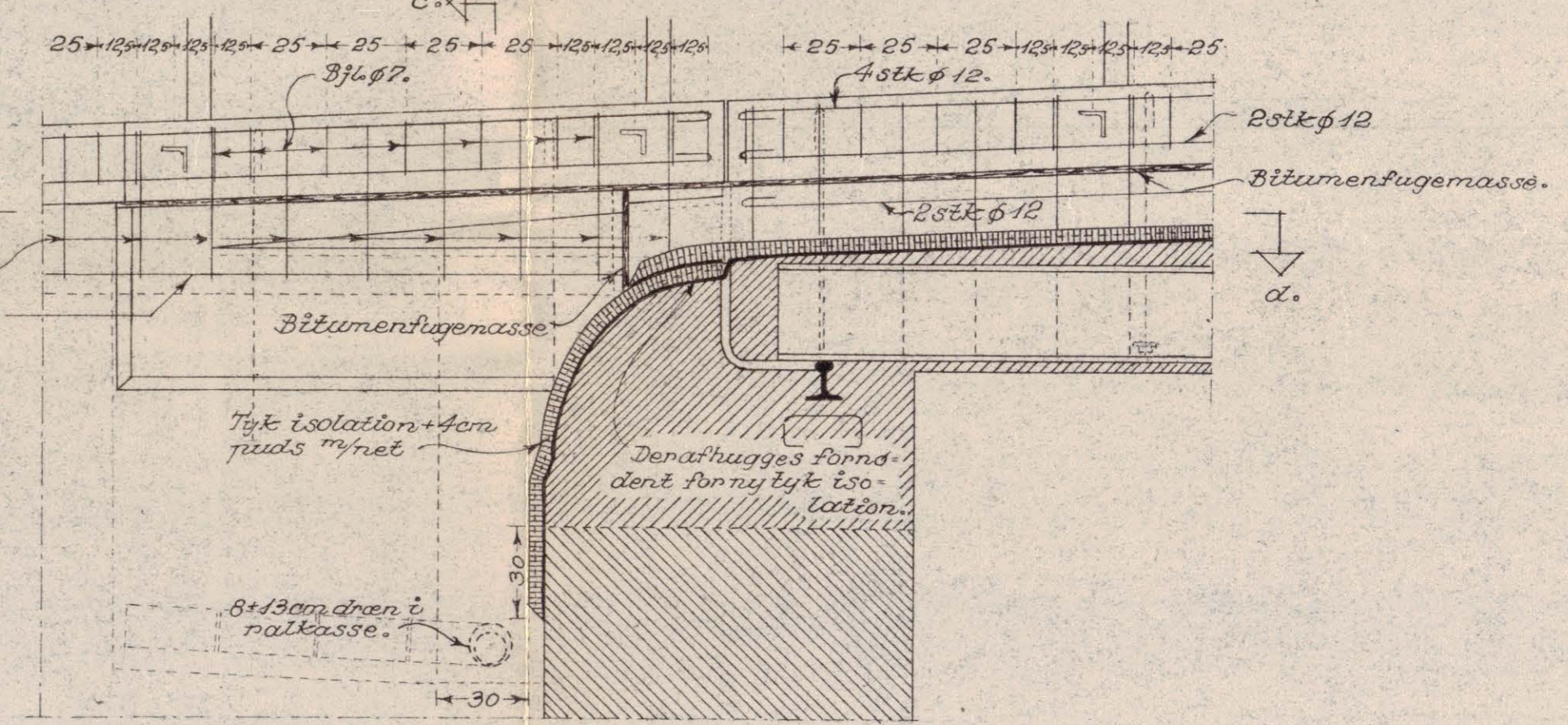
Detail af sceptenforlængelse, 1:5.



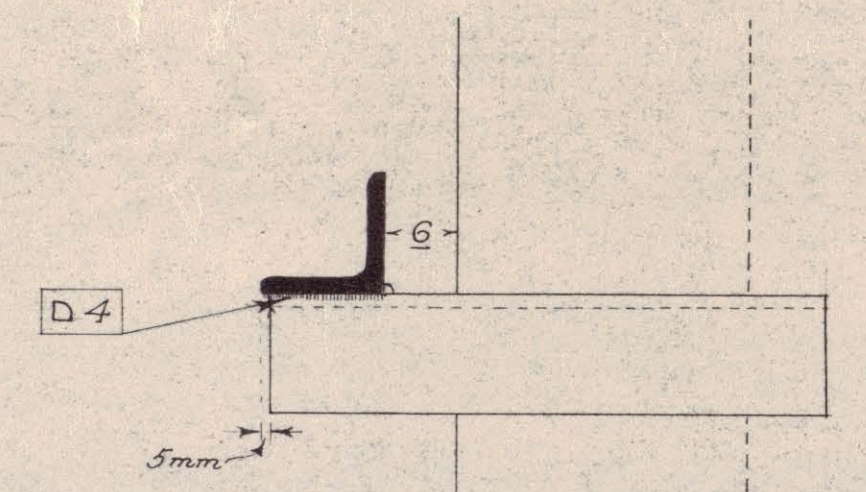
Snit c-c, 1:20.



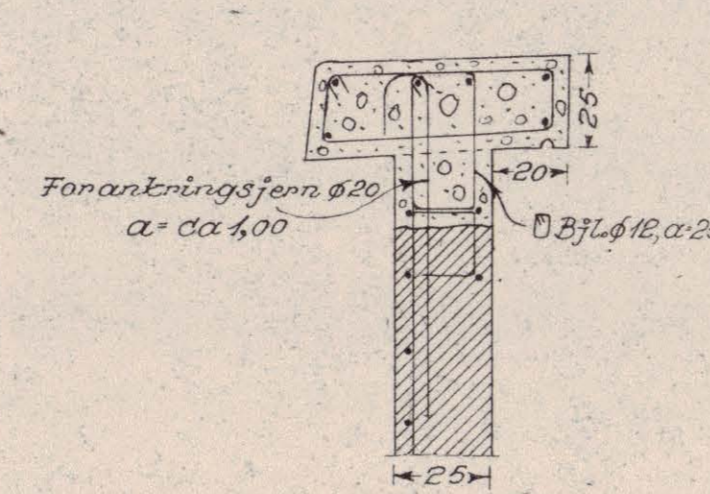
Snit B-B, 1:20.



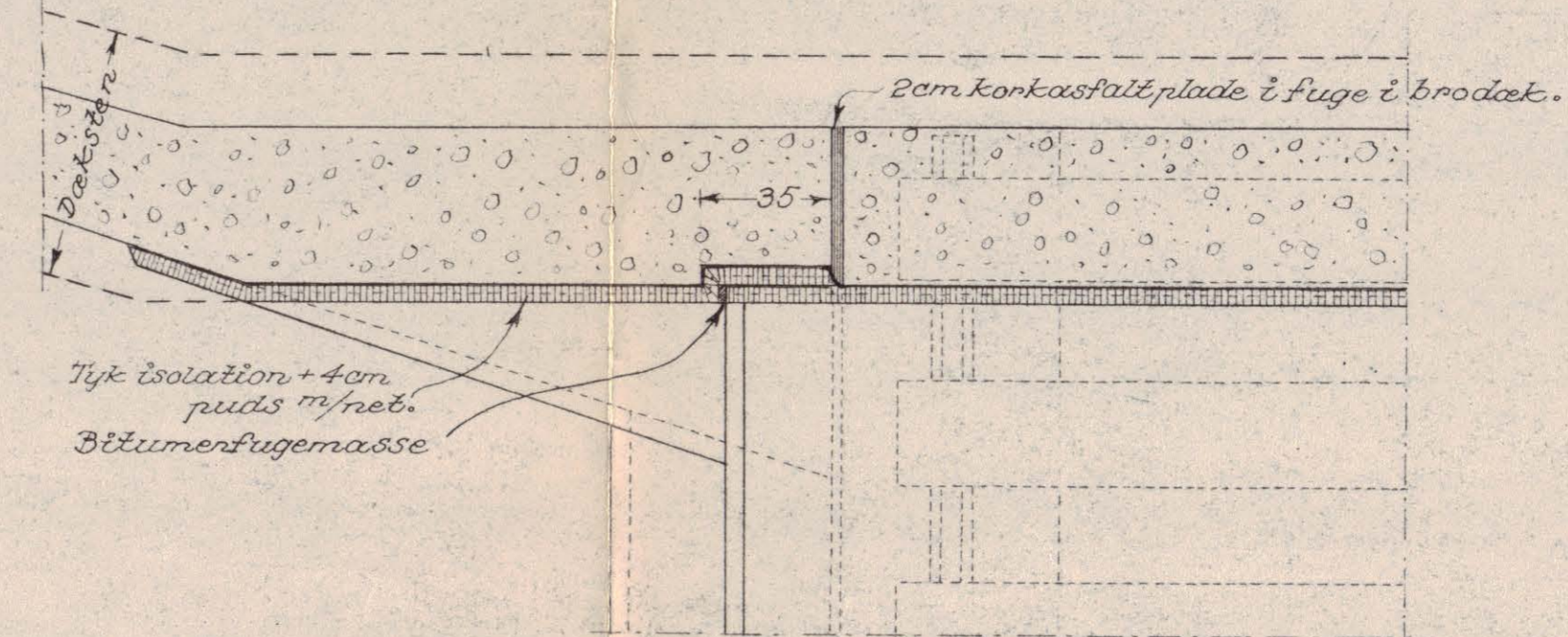
Snit e-e, 1:5.



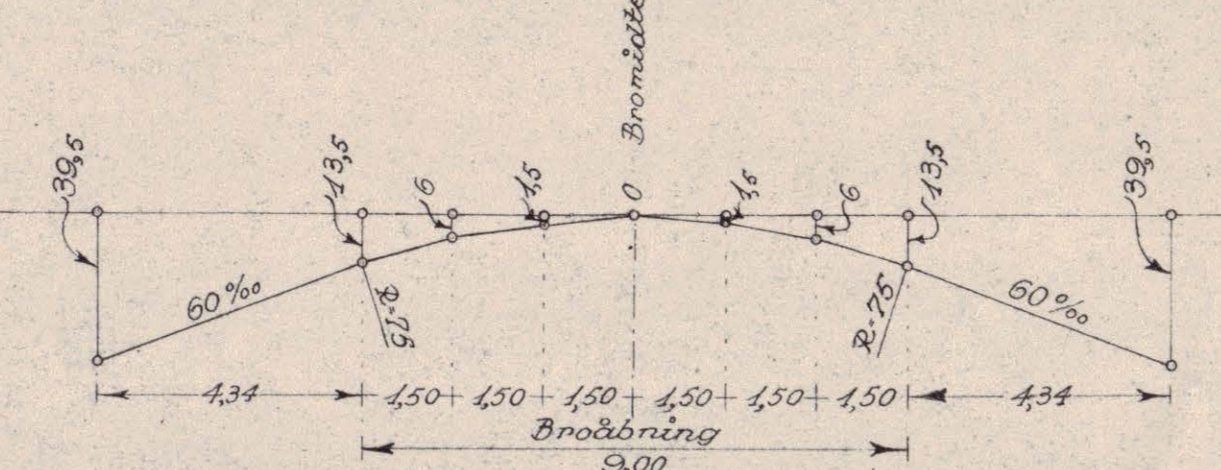
Snit E-E, 1:20.



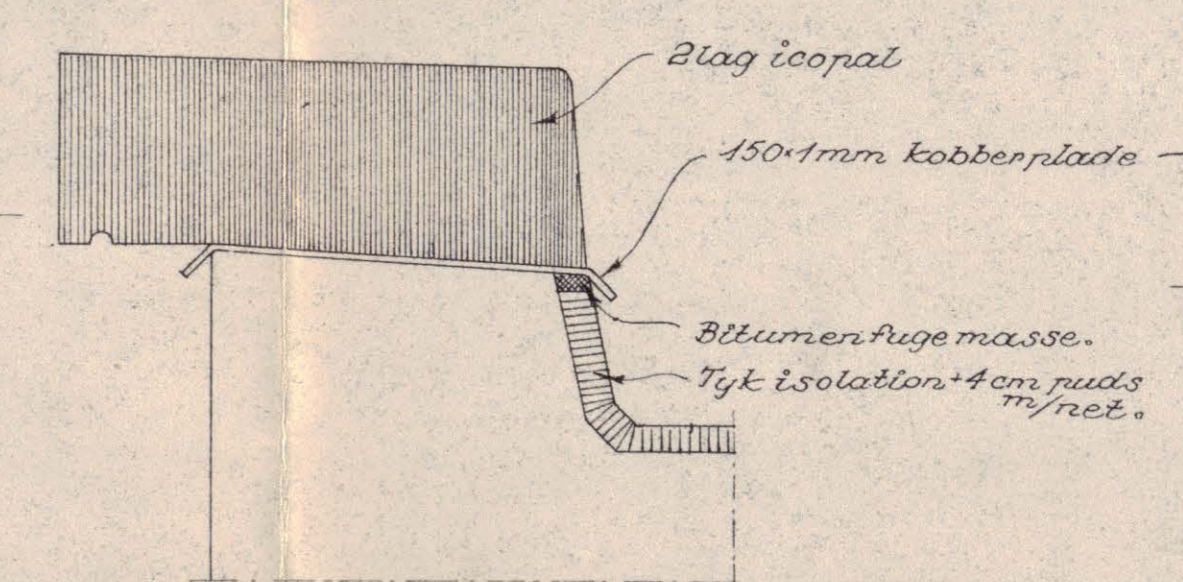
Snit d-d, 1:20.



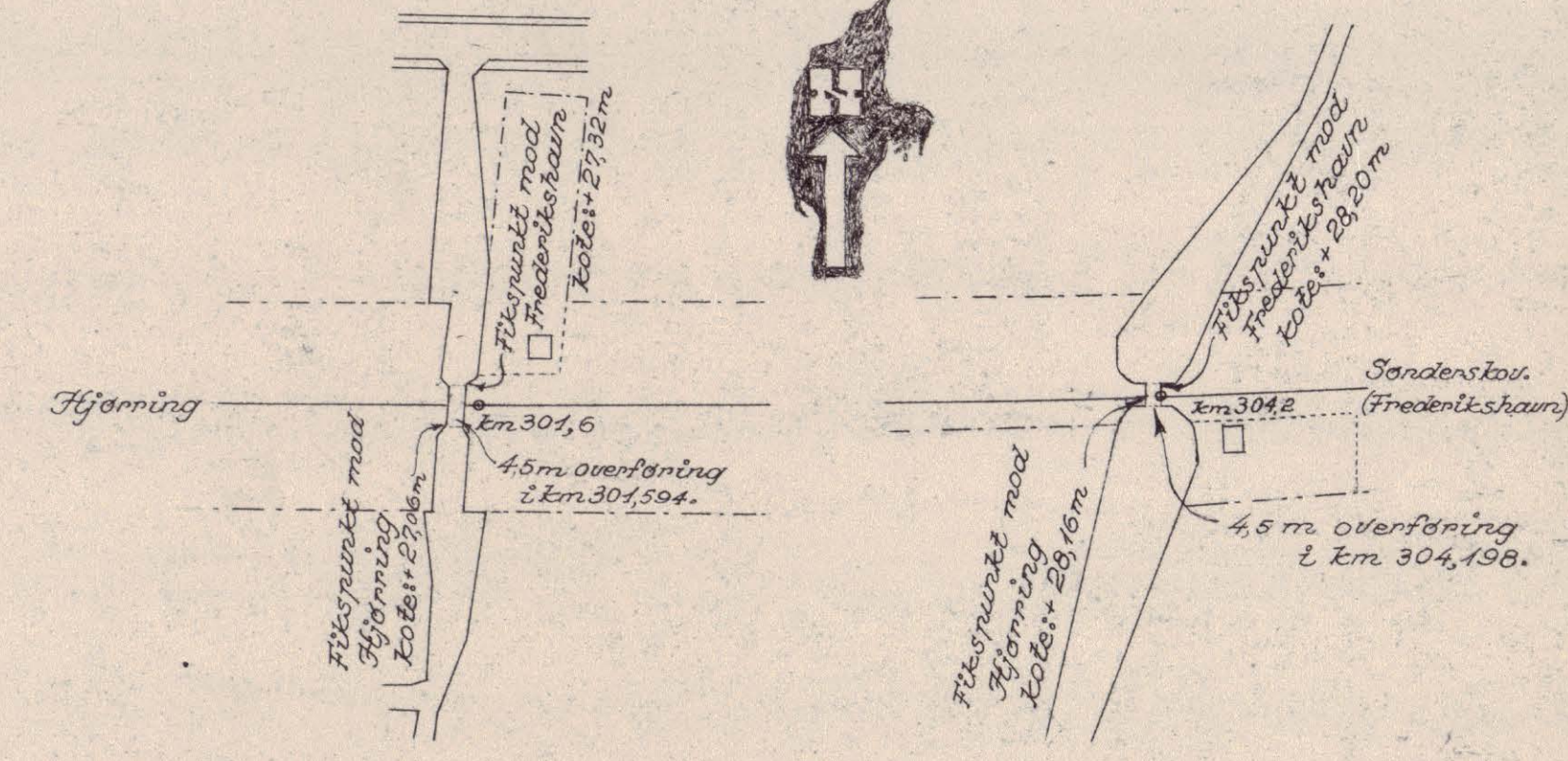
Længdeprofil af dæksten.



Snit gennem fuger i dæksten, 1:10.



Situationsplanen, 1:2000.



Danske Statsbaner
 Baneafdelingen - 1. Banekontor
 Hjørring-Sønderstov, km 301,594.
 4,5 m Overføring.
 Istandsættelse og udvidelse fra 4,0-4,5 m

Konstn. K.H.
 Tegnet 2.02 d. 8/12 1949
 Kontor: 2025
 Rel: a, d. 1-4-50

20 278 a

Se endvidere plan nr. 12852.

