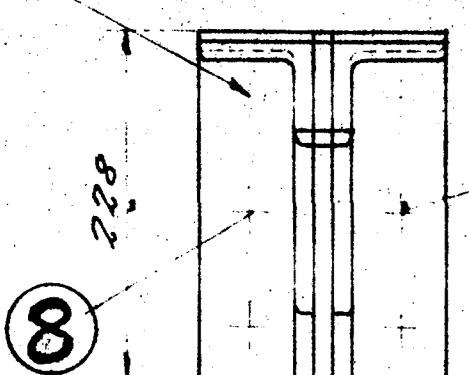
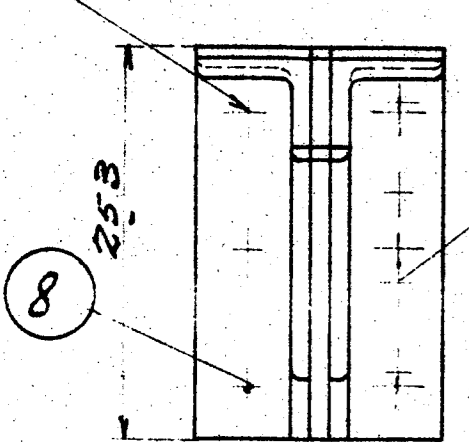


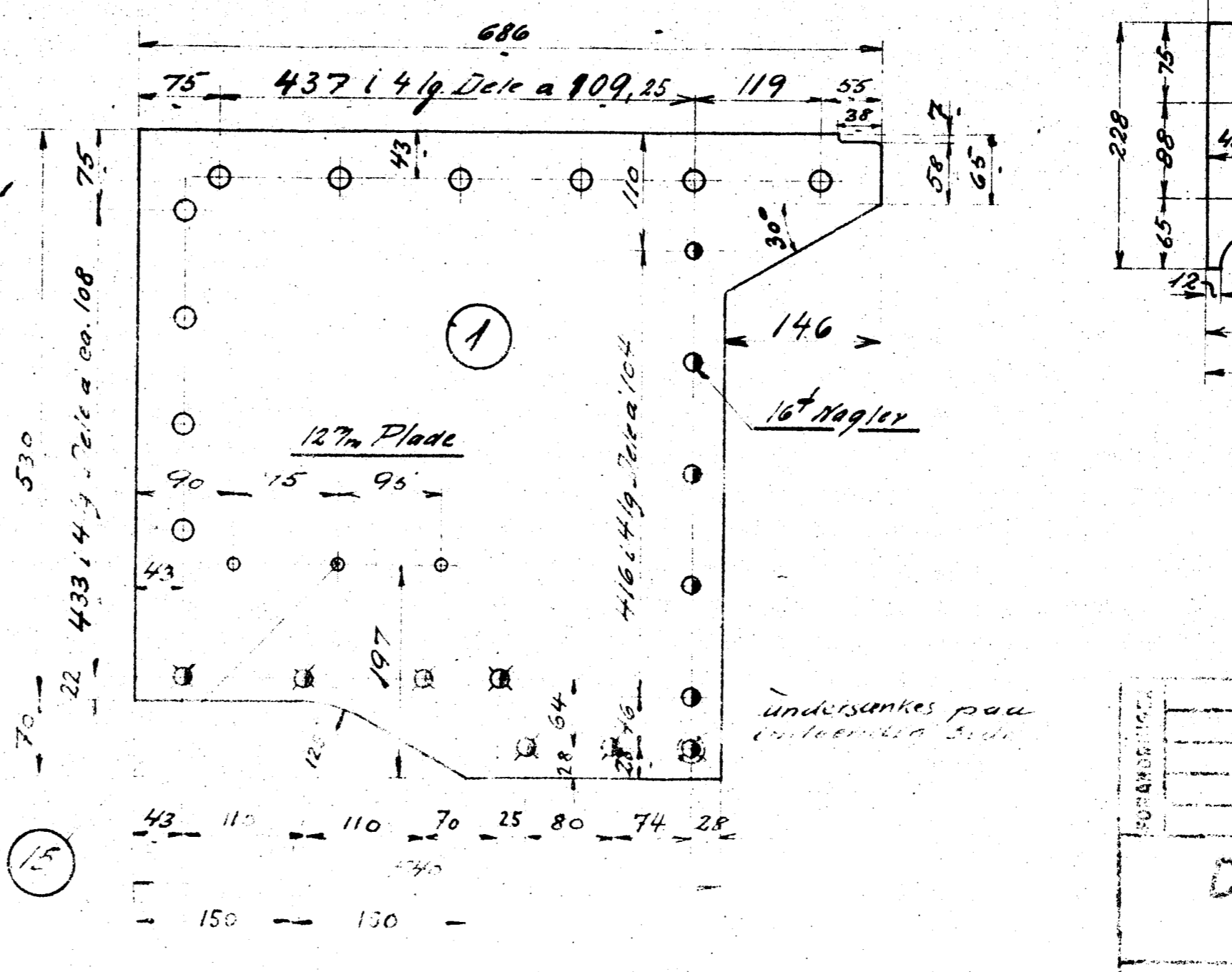
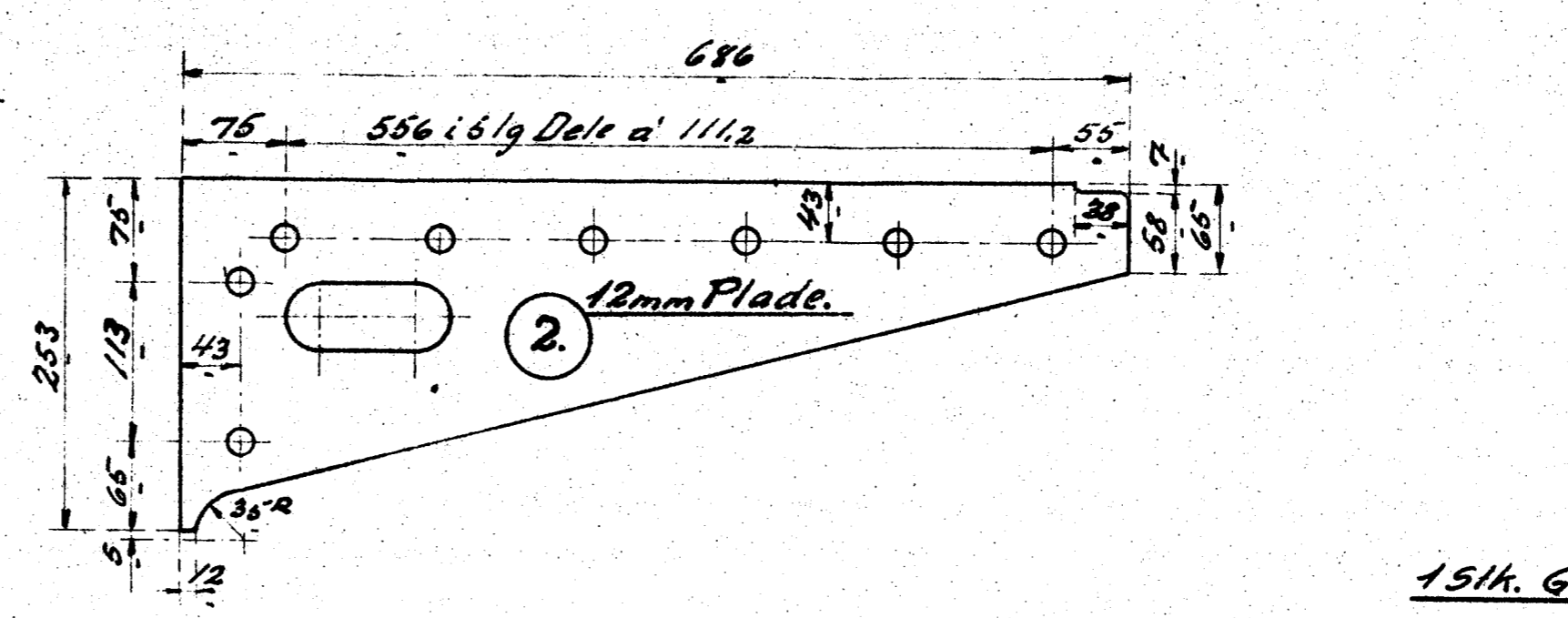
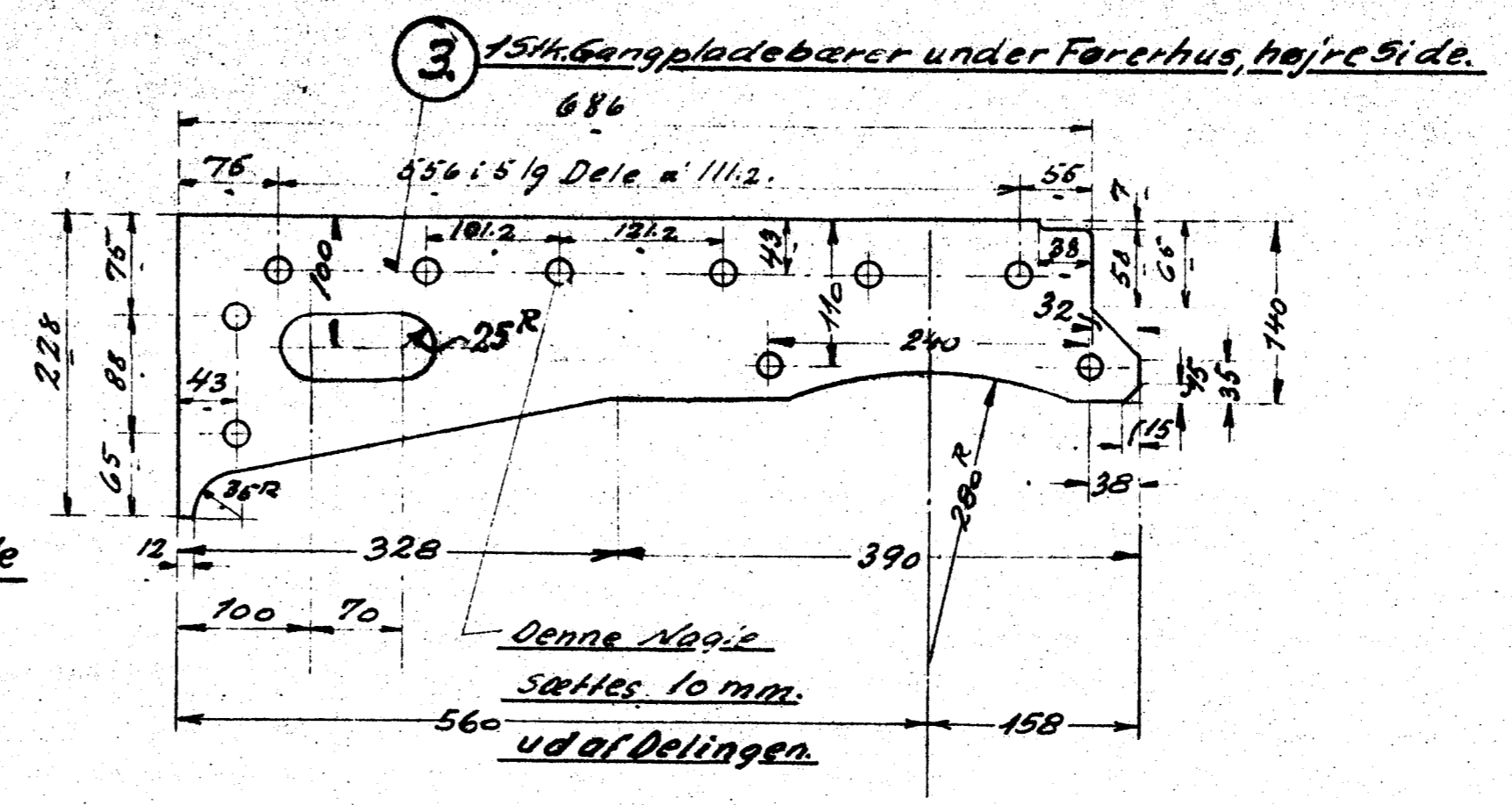
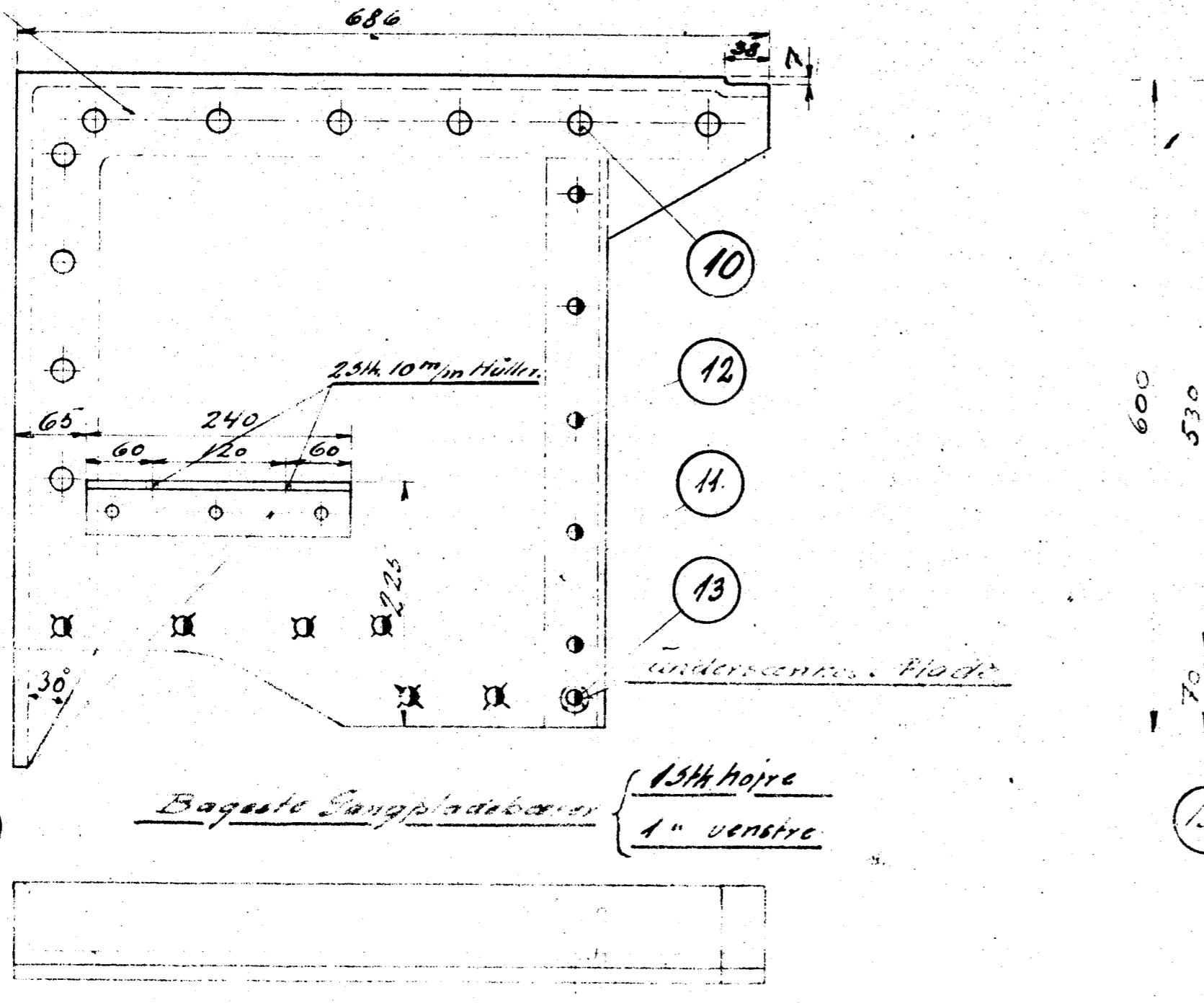
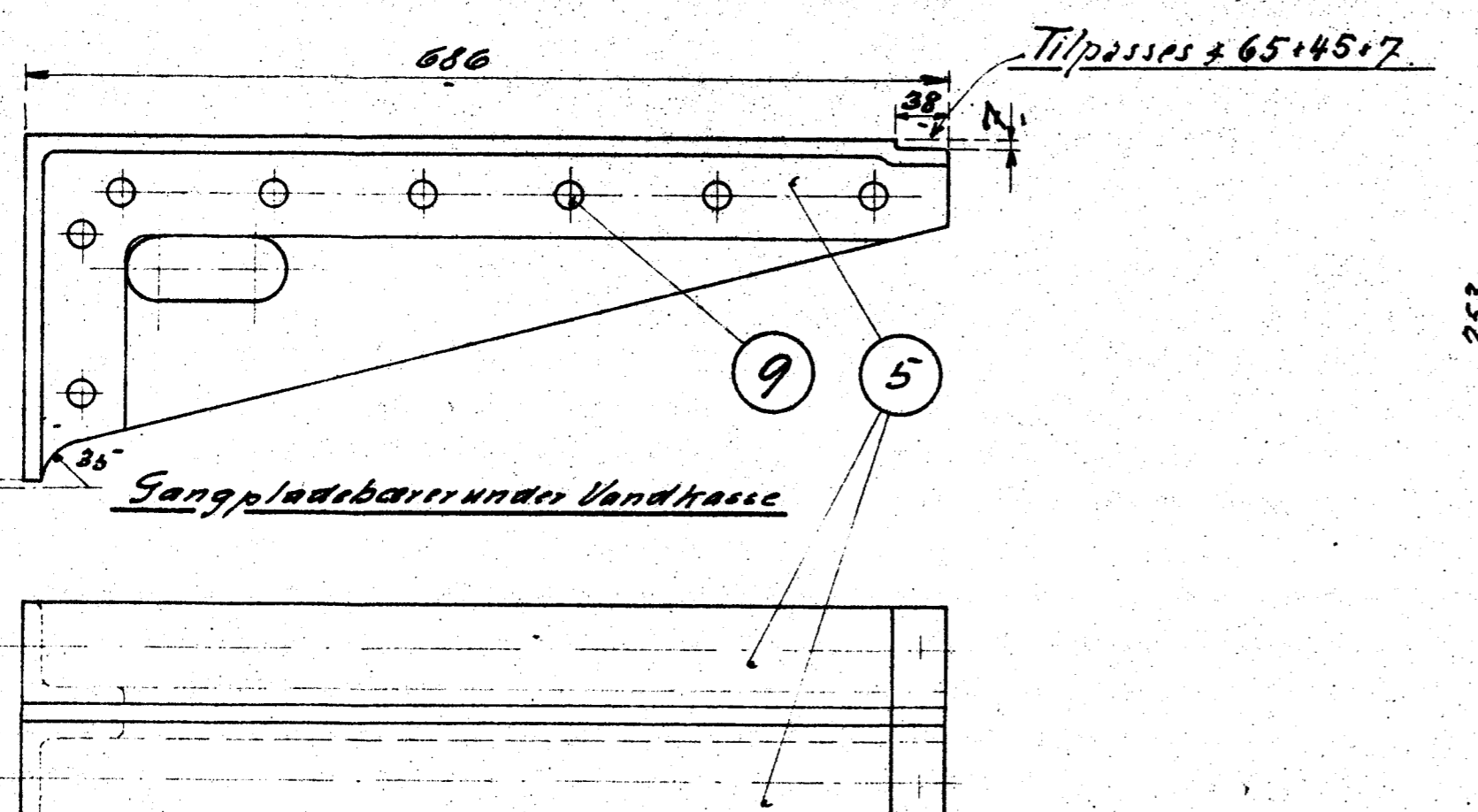
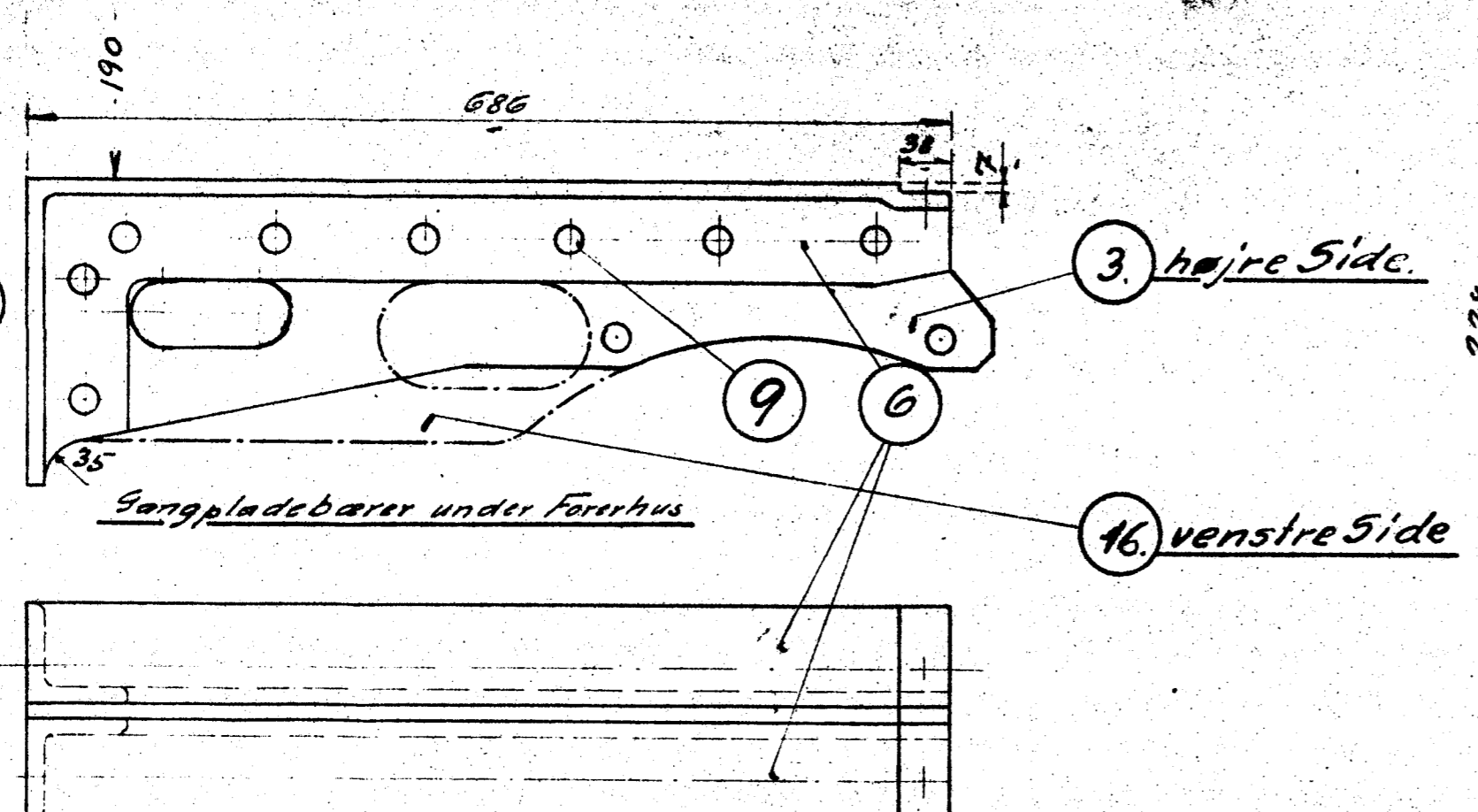
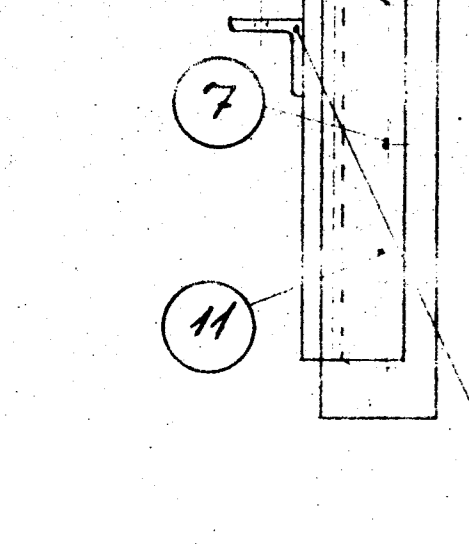
Markes op efter Ramme



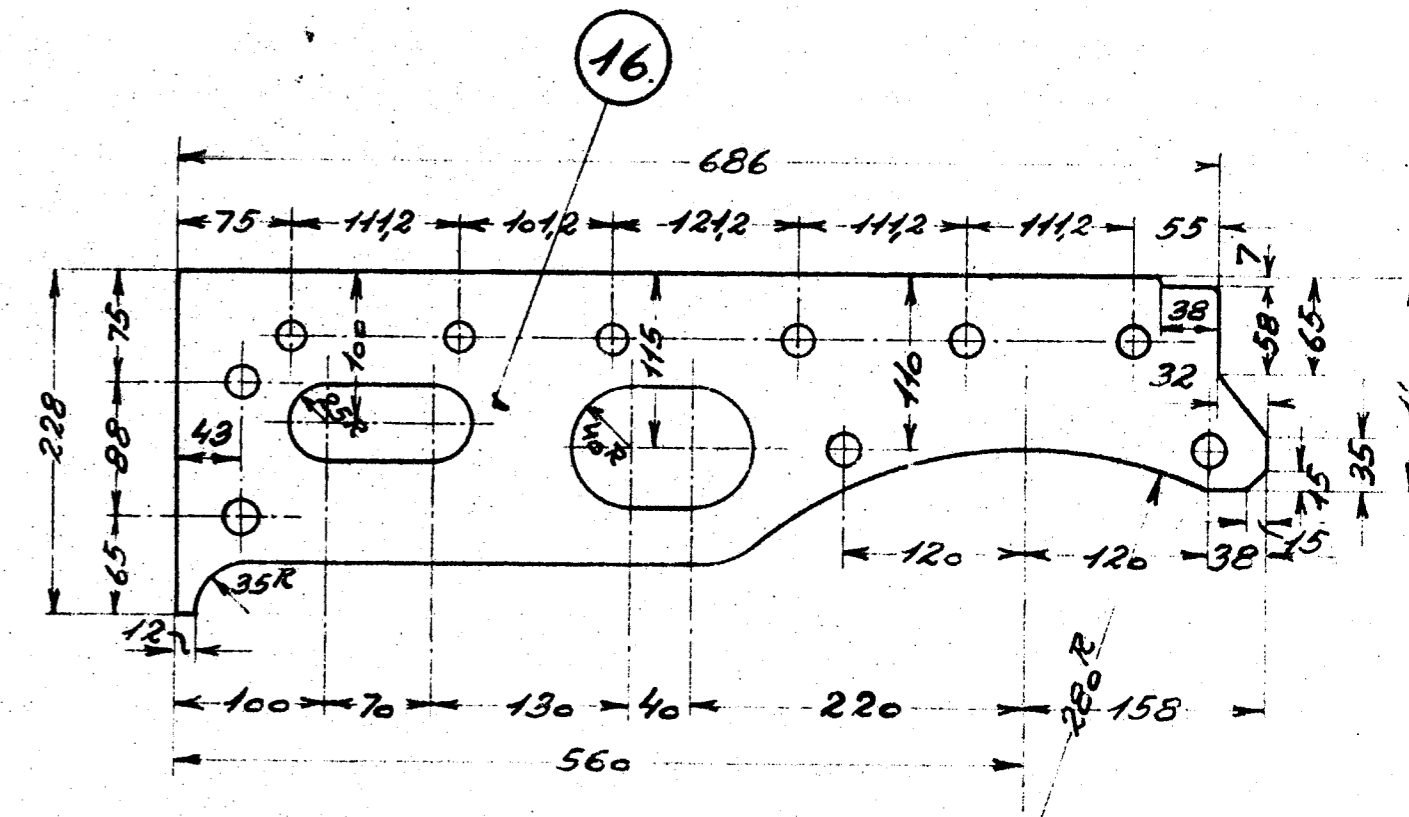
Markes op efter Ramme



Markes op efter Ramme



15th. Gangpladebærer under Førerhus, venstre Side.



Stykkliste Nr. 42458

Nr. te	Stk	Betegnelse	Mate	Bearb	Model
1	2	Plade 686x600x12	Fluss jern	1250x610 x 12	
2	2	do 253x686x12	"	700x340x12	
3	1	do 228x718x12	"	725x235x12	
4	2	Δ 75x75x12x1326 1. v.	"	75x75x12 x 2700	
5	4	do = 944 2. v.	"	75x75x12 x 3850	
6	4	do = 914 2. v.	"	75x75x12 x 3700	
7	18	Nagler 23 <sup>rd</sup> x80	Mite jern		Best.
8	22	do 23 <sup>rd</sup> x68	"		
9	32	do 20 <sup>th</sup> x66	"		
10	24	do 20 <sup>th</sup> x57	"		
11	2	L 50x50x7x525	Fluss jern	50x50x7x102	
12	10	Nagler 16 <sup>th</sup> x113	Mite jern		Best.
13	2	do 16 <sup>th</sup> x35	"		
14	2	L 50x50x7x240	Fluss jern	50x50x7x490	
15	6	Nagler 13 <sup>th</sup> x140	Mite jern		
16	1	Plade 228x718x12	Fluss jern	725x235x12	

Gangpladebærer under Førerhus andr. 17-11-44.  
Tegn. A/S Frichs  
Nr. 9L-14.090a  
1:5  
Indr.  
Dato

Gangpladebærer  
D- Tanderløk, Litro O  
Q.14.090