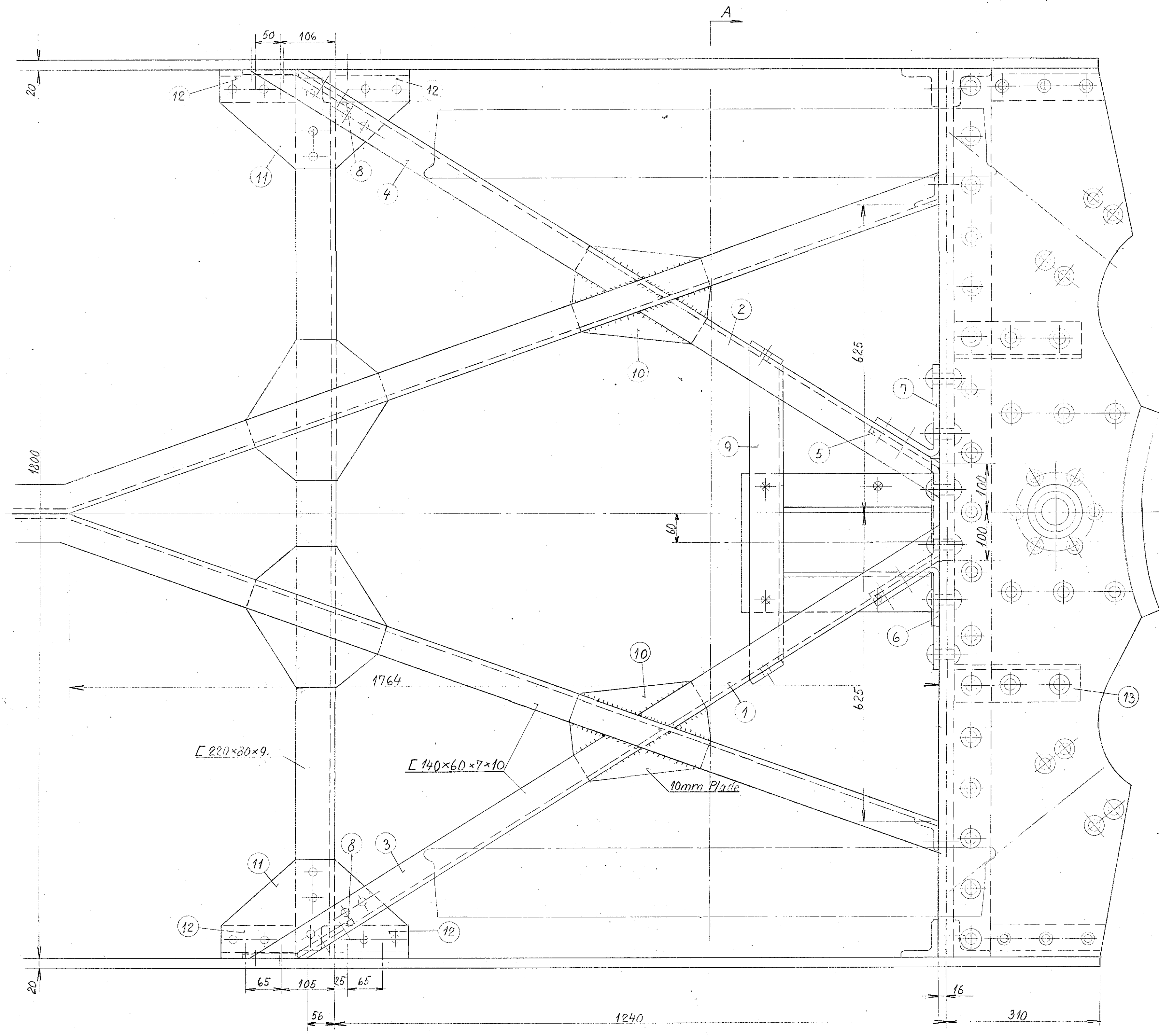
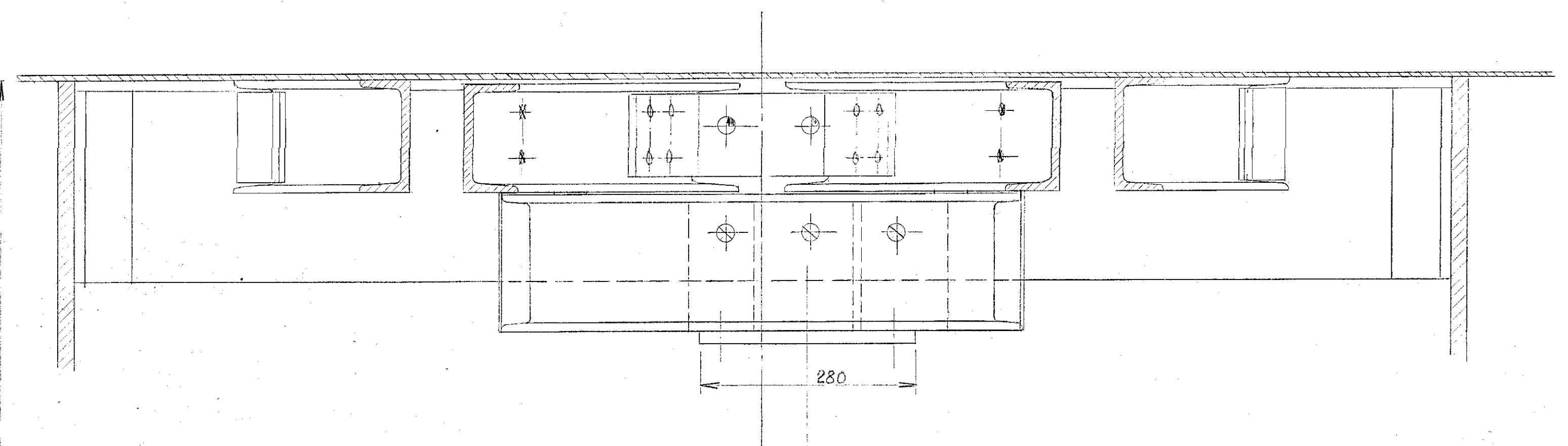
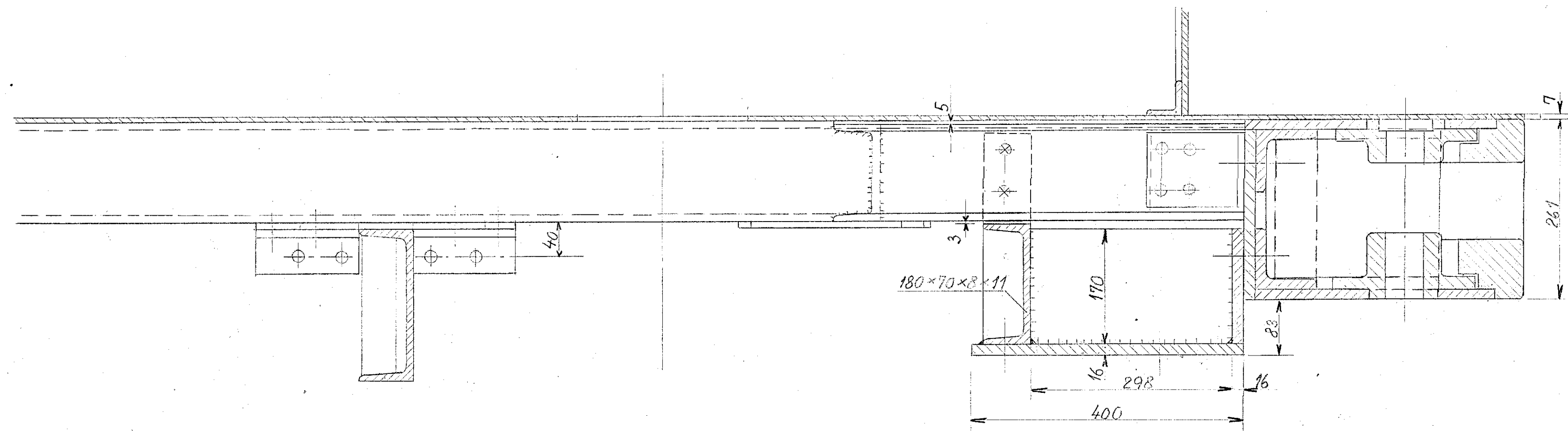


Spit A-A.



- ⊕ 16 mm Nitter.
- ⊕ 5/8" Bolt.
- ⊕ 7/8" Bolt.
- ⊕ 22 mm Nitter.

Styktal.	Genstand.	Nr.	Material, Tegn. Nr.
4	Vinkel.	13	Flussj. ad KT. 21
2	Laskeplade.	12	Flussj. KT. 19o
2	"	11	" "
2	"	10	" "
1	Konsol.	9	" "
2	Laskeplade.	8	" "
1	"	7	" "
1	"	6	" "
1	"	5	" "
1	Skraostiver.	4	" "
1	"	3	" "
1	"	2	" "
1	"	1	" "

Forandringes. Pos 1-4 og 10 andr. A 12-7-43 Vedl.

De danske Statsbaner.
Maskinafdelingen.

Forstærkning af Pufferplanke
paa Tender.
Litra C, D_{II}, D_{III}, D_{IV}, K, K_{II}

Maalestok Tegn. 44-5-43 G. S. L. Co.
1:5.
Kalk.
Rev.
Godk. 27/5 1943

A1
KT. 19.