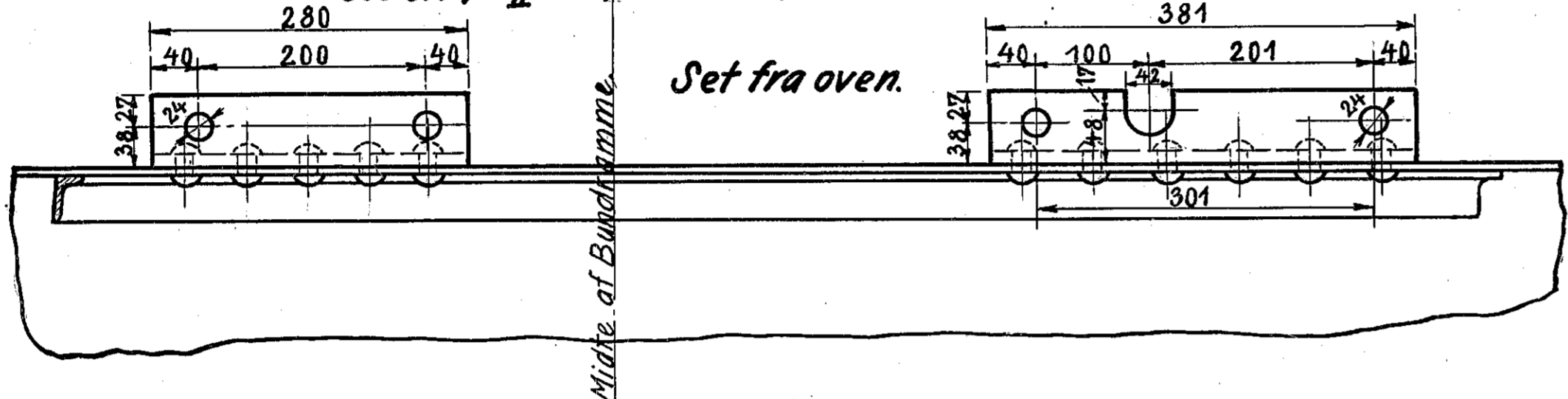
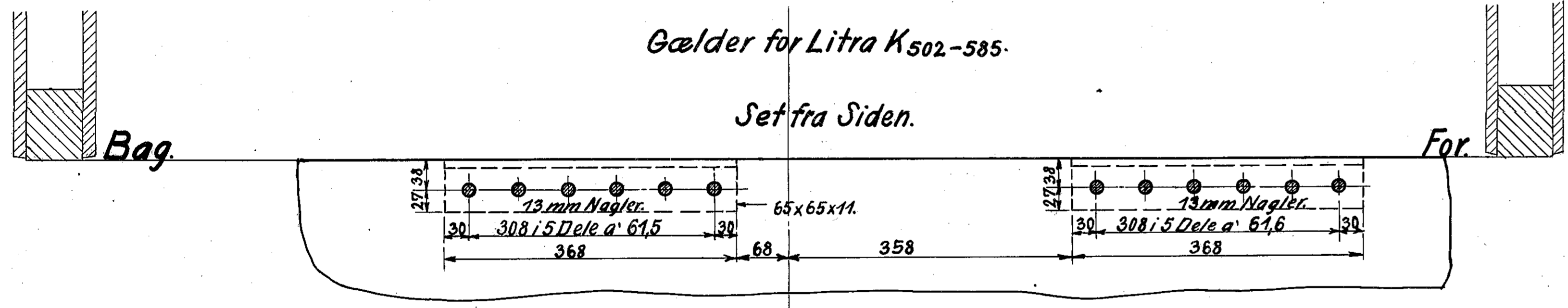
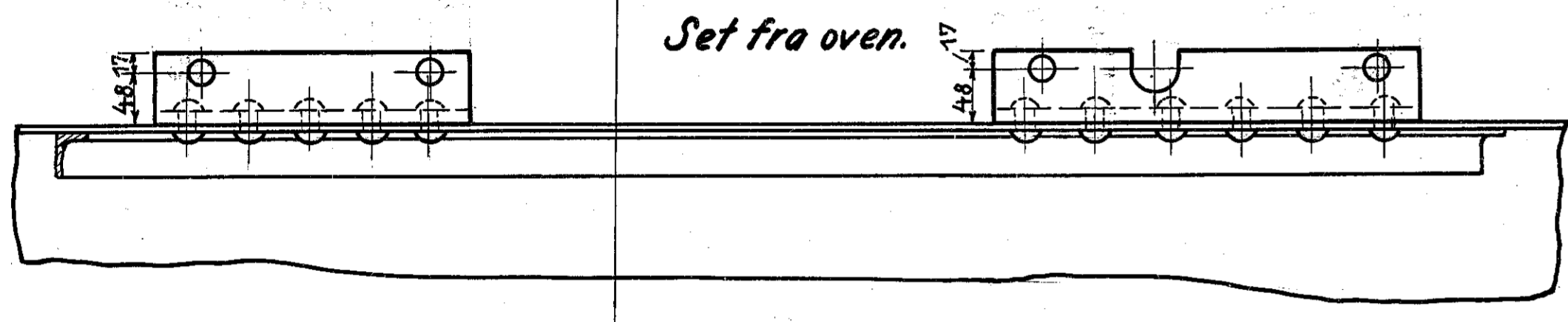


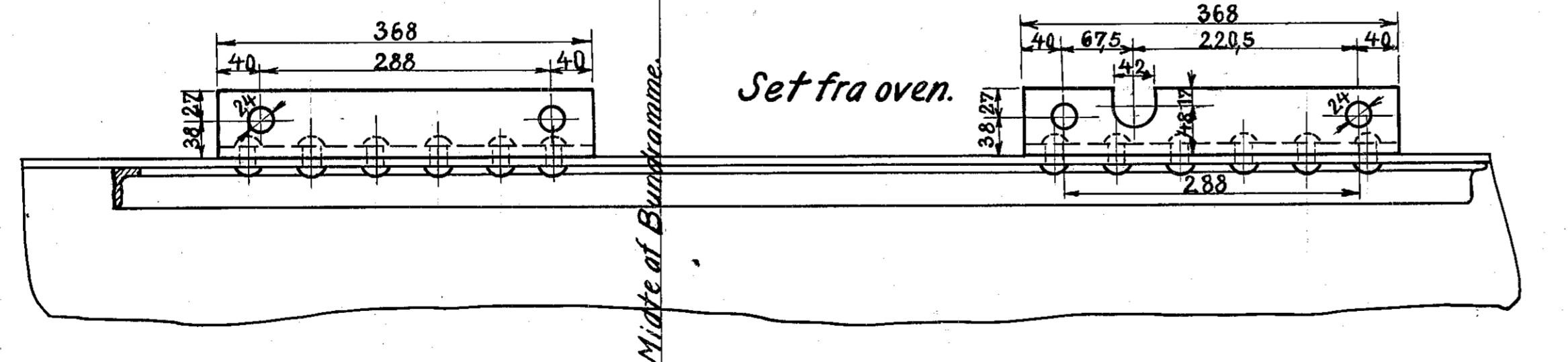
Gælder for Loko: Litra K_{II} (undt: 539,542, 553,560, 581,595) og naar Bundrammerne fornyes, tillige for Loko: Ltr. C, K₅₈₆₋₆₀₀, K_{II} 539,542, 553,560, 581,595.



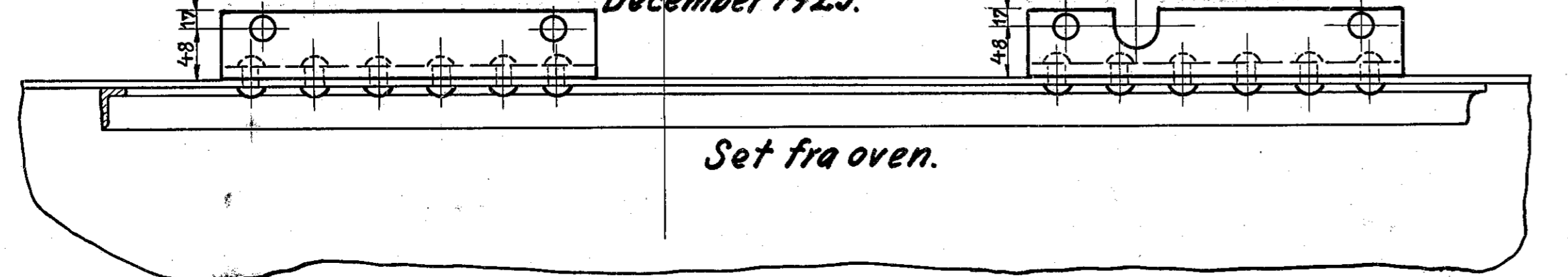
Gælder for Litra C, K₅₈₆₋₆₀₀, K_{II} 539,542, 553,560, 581,595, hvis deres Bundrammer ikke er fornyede efter medio December 1925.



Gælder for Litra K₅₀₂₋₅₈₅ naar Bundrammerne fornyes.



Gælder for Litra K₅₀₂₋₅₈₅ hvis Bundrammerne ikke er fornyede efter medio December 1925.



| | | |
|--|--|--|
| | | |
| | | |
| | | |
| | | |
| | | |
| | | |
| | | |
| | | |
| | | |
| | | |

De danske Statsbaner.
Maskinafdelingen.

Bærevinkler til Askekassen paa
Loko: Litra C, K og K_{II}.

Kjøbenhavn d 22/12/27 Maalstok.
Tegnet af: H.P.H.
Kalkuleret af: "
Revideret af: "
1:5 ad K_{II} 7.