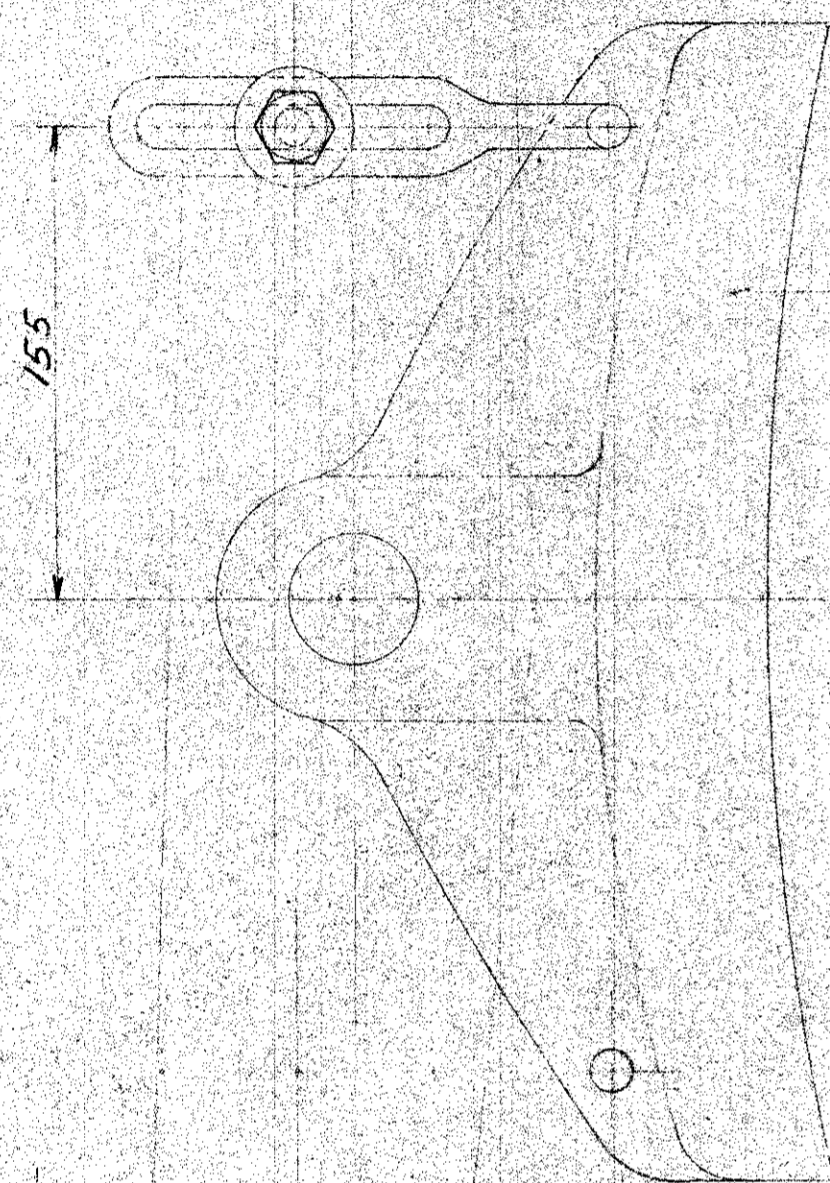
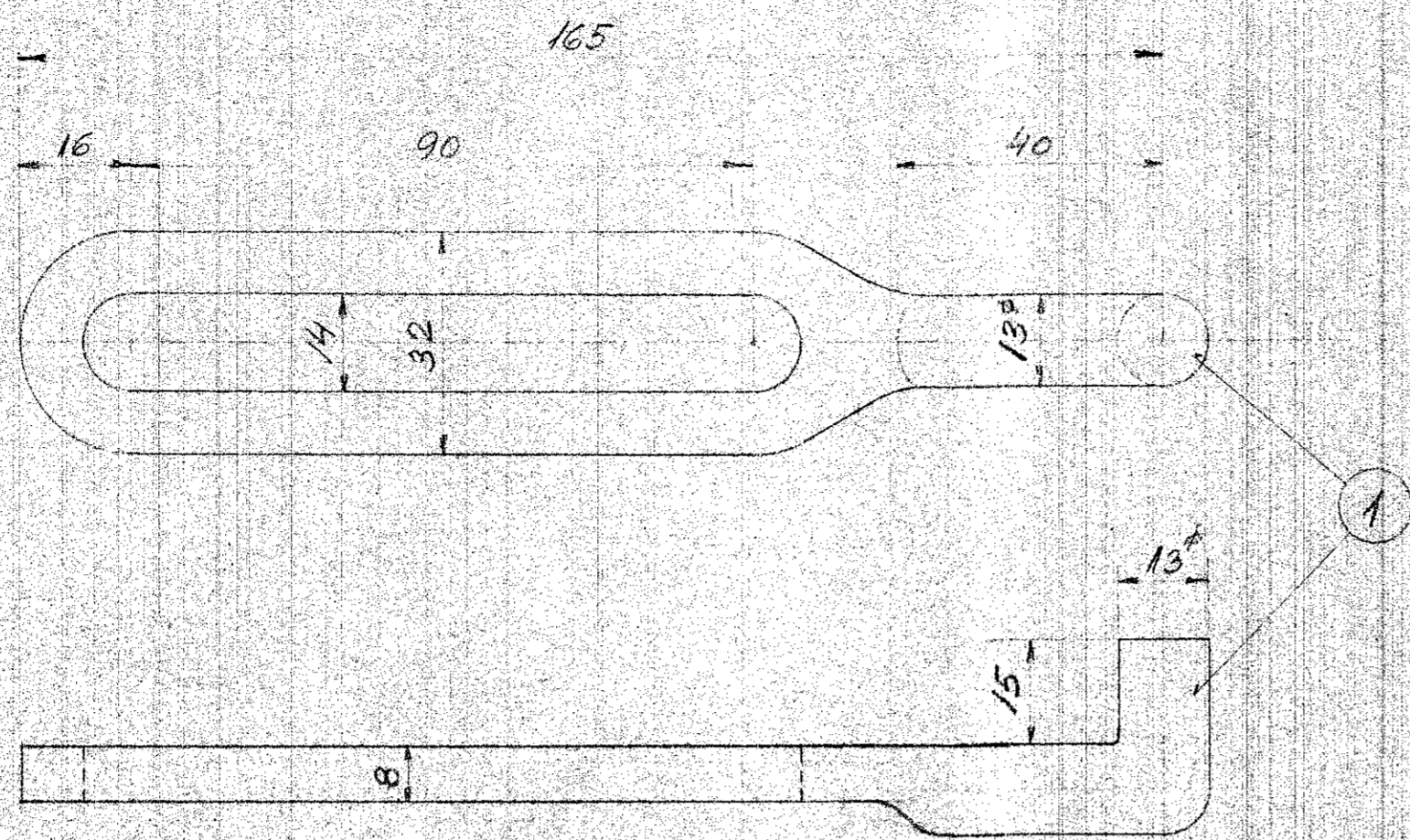
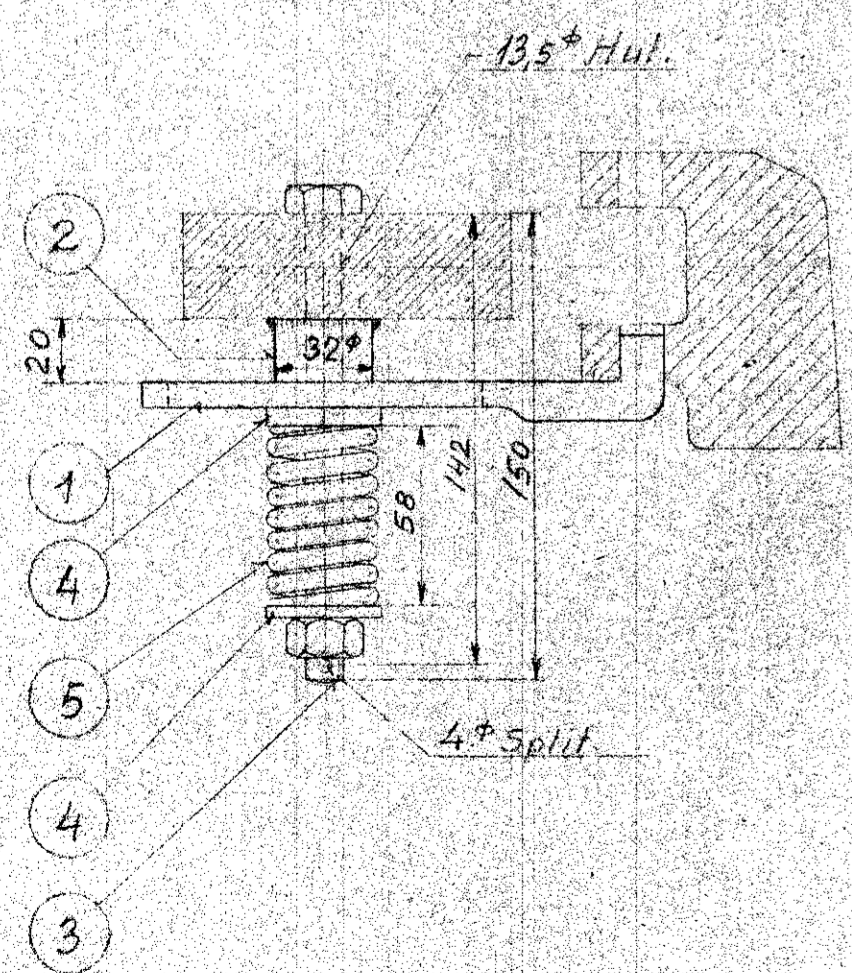


Tegn. P 102



Tegn. NL 46a



Arkiv 9/7-15

E344

C501

F63

1	Fjeder	5	Tegn. 11.12.98 Pos. 14
2	Fjederkran	4	Tegn. N.V. 12.98 Pos. 13
1	Bolt 1/2" x 150	3	
1	Rundjern 32" x 20	2	
1	Stillepinde	1	
Stycketal	Genstand	Nr	Material
Foramlings	Pos. 1 fluffet [A 7-6-11 f. da.]		
	Pos. 1 og 3 endret [B 19-5-15 f. da.]		
De danske Statsbaner			Maafest
Maskinafdelingen			Tegn. 3-5-43 f. 1/15 f.
Ændring af Bremsklodsind-			1:2,5
stilling paa Bagveden Lomo P			1:1
Drift og Hæbelspud paa Lomo M.D.C.R.			1:1
Højs.			1:1
			AB
			NL 513