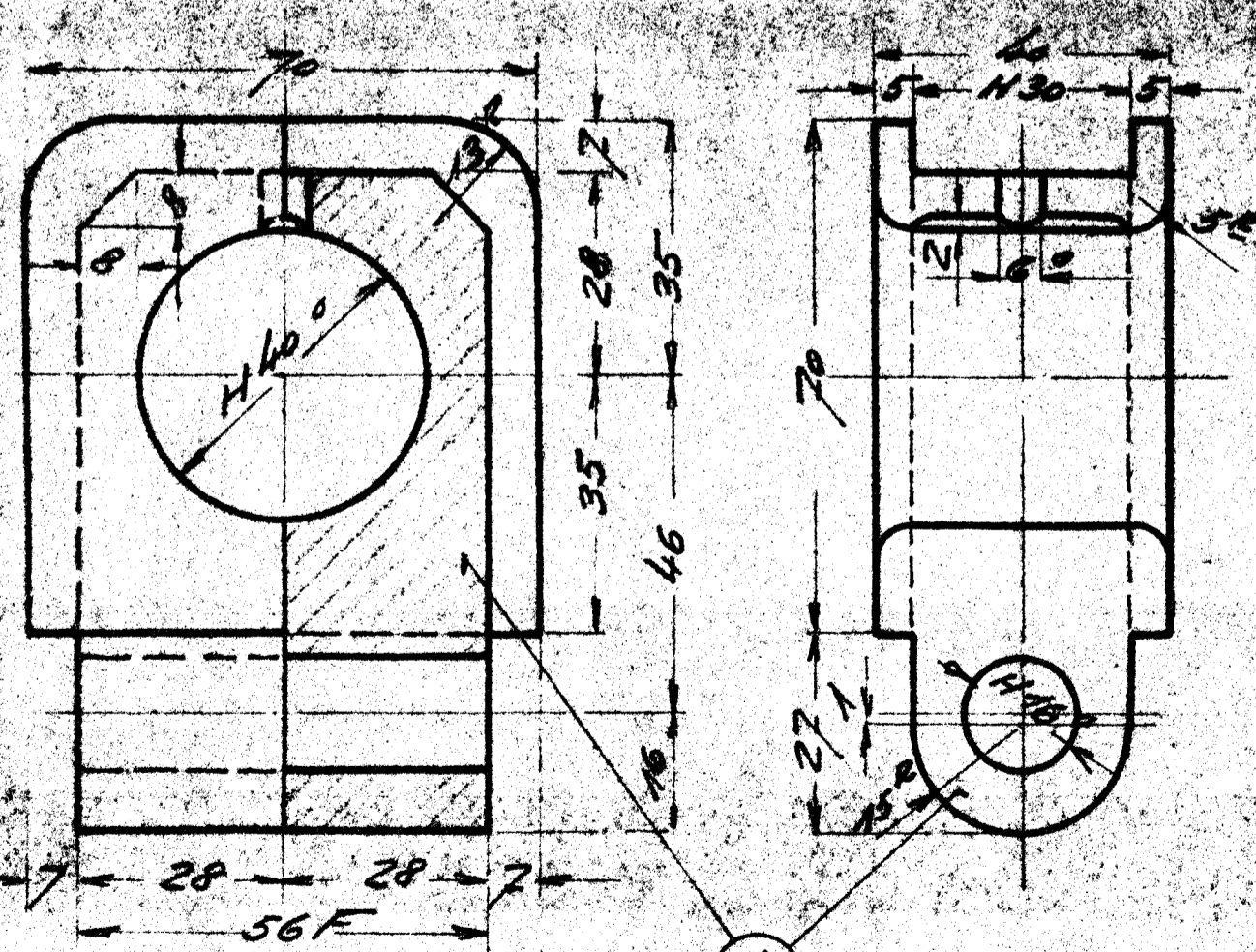
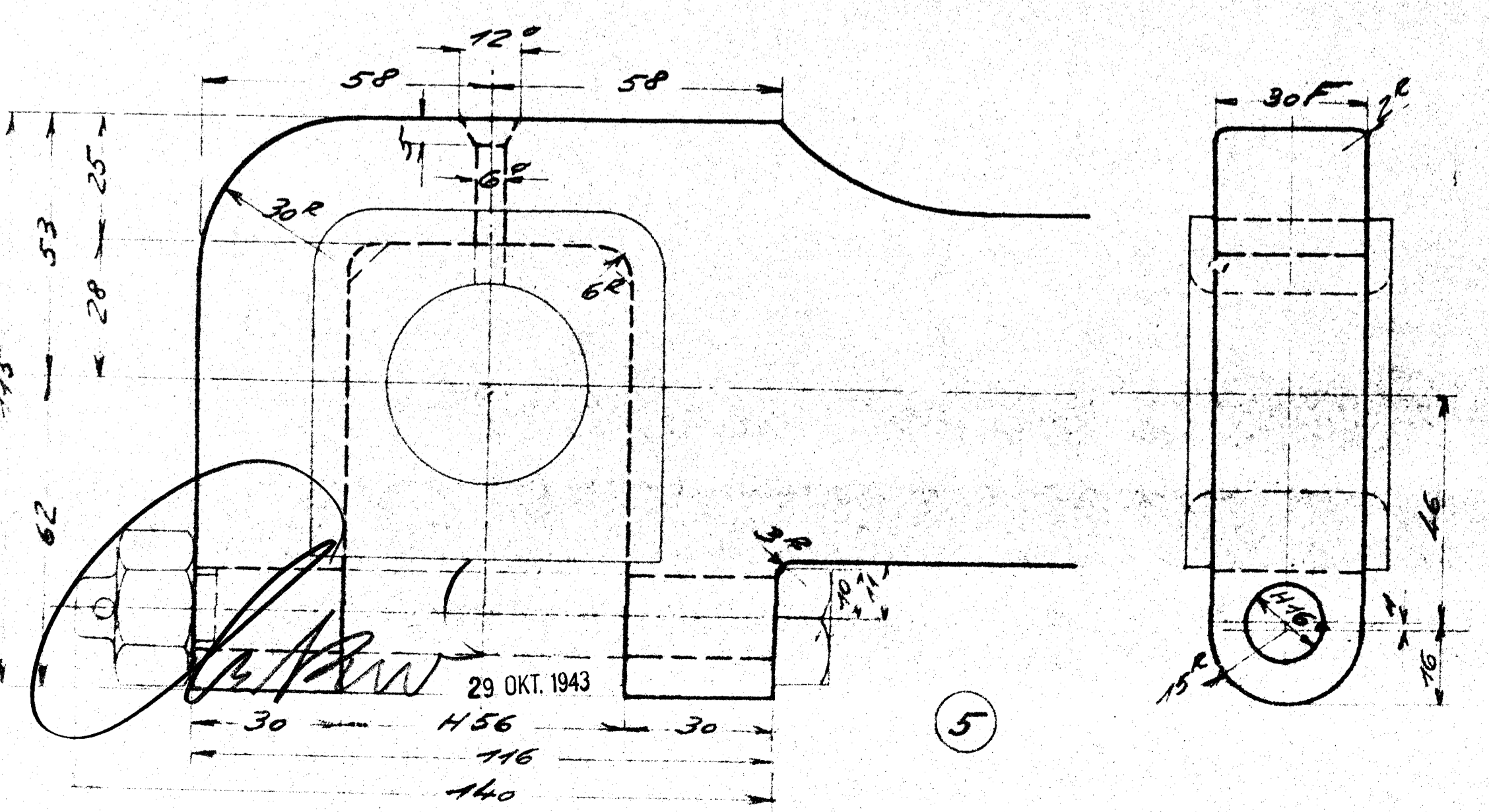
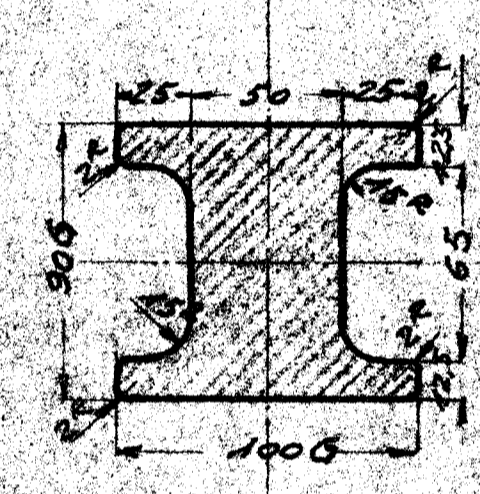
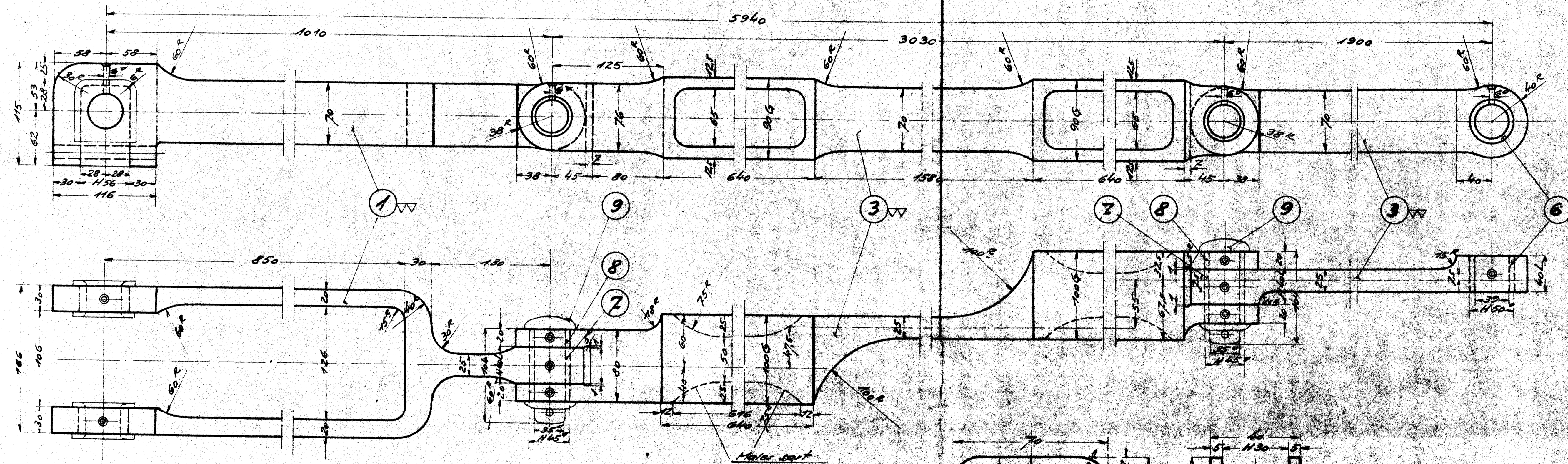
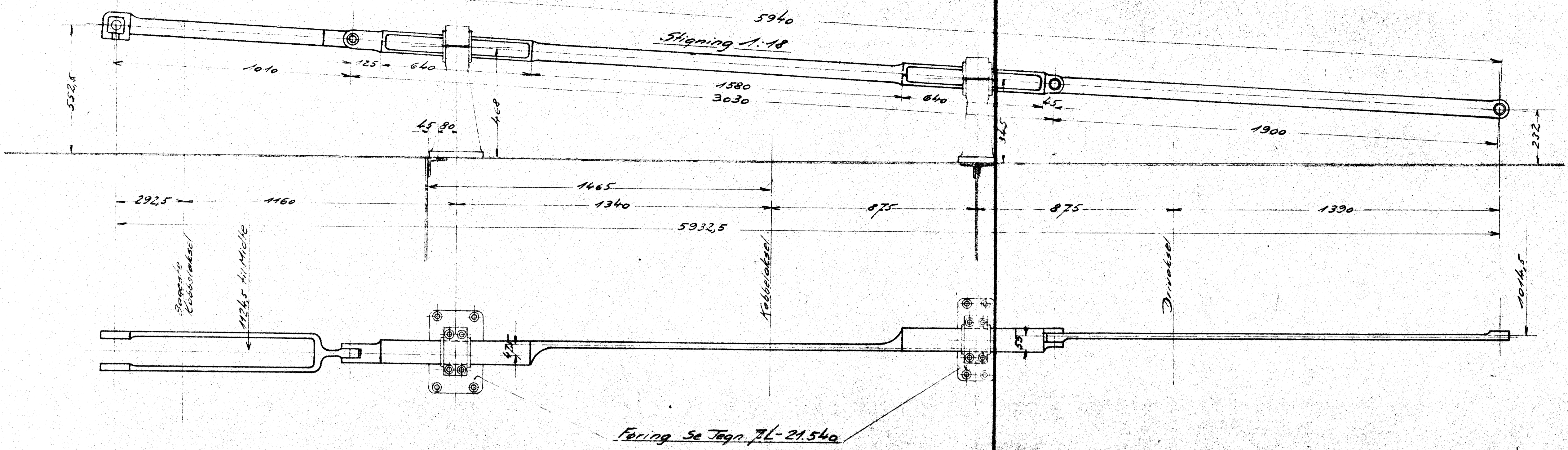


STYRELSE Nr. 77709

1	Omslyringsstang	1	115-115-500
1	Ob.	2	" " " 1650
1	Ob.	3	" " " 20-70-1150
2	Bænde 2 1/2	4	Løjte bronze 2584x
2	Bolt 3 1/2 x 110	5	se tegn. 7L-29.956
1	Bæring 3 1/2 x 40	6	" " " 29.240
2	Ob. 3 1/2 x 40	7	" " " "
4	Ob. 3 1/2 x 20	8	" " " "
2	Spilbolt 3 1/2 x 104	9	" " " 29.940



29 OKT. 1943

De danske Statsbaner
Maskinafdelingen.

Tegn. H. Frichs.
1.10. Nr. 7L-21.500.
1.2.5. Jmk.
1.1. Del.

Omslyringsstang H. 65c.
1D-3 cyl. Godt. Kapslokomotiv