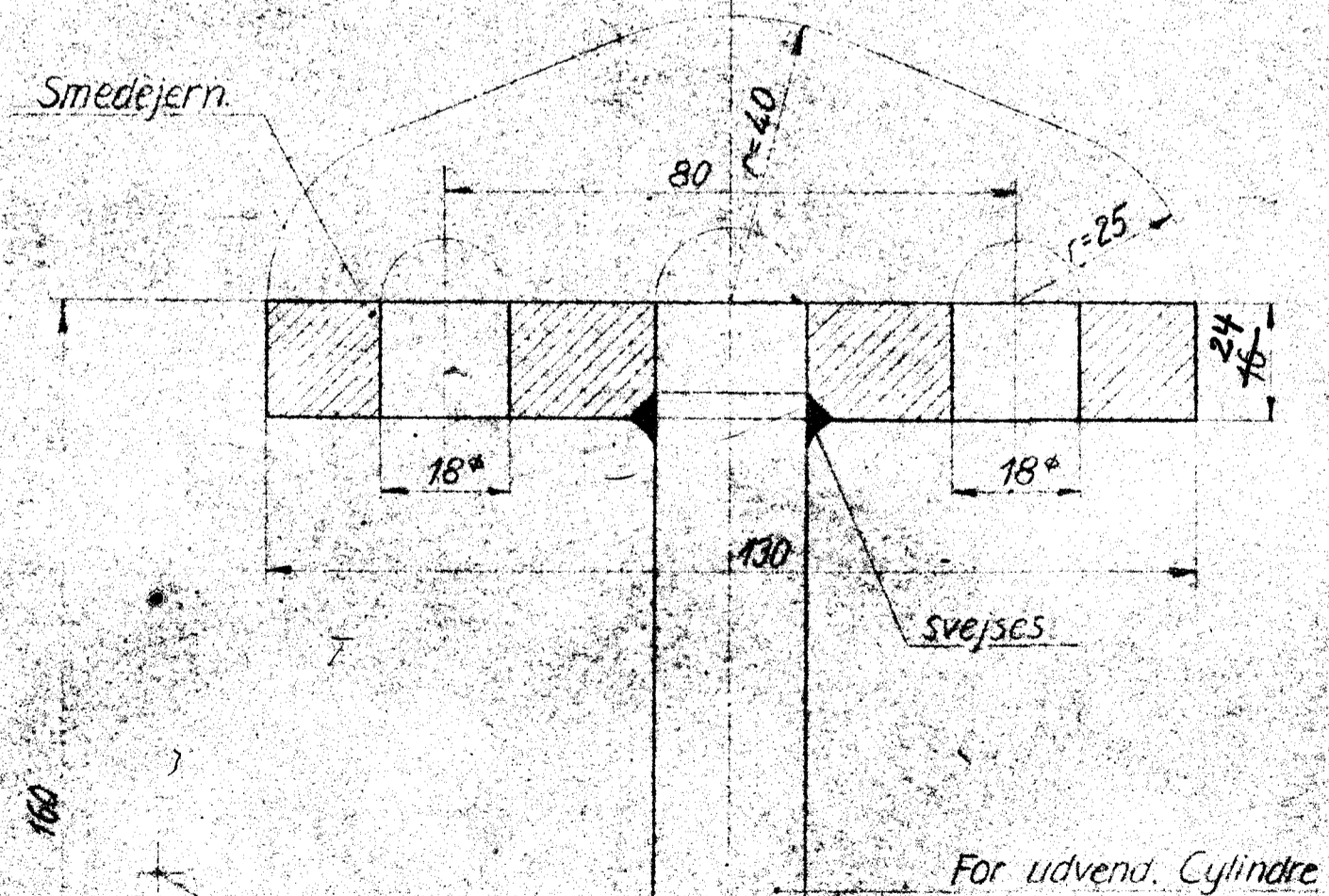
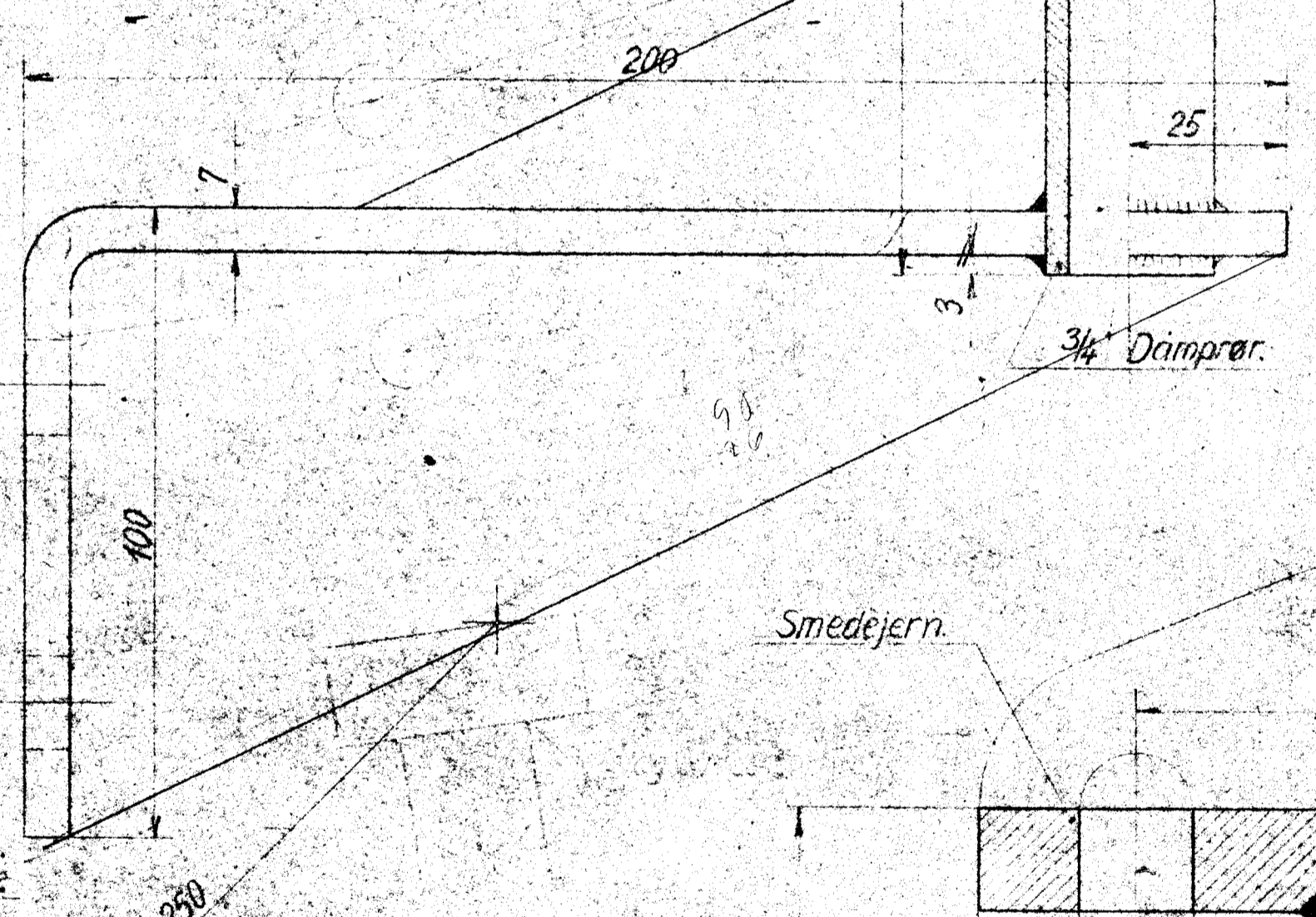
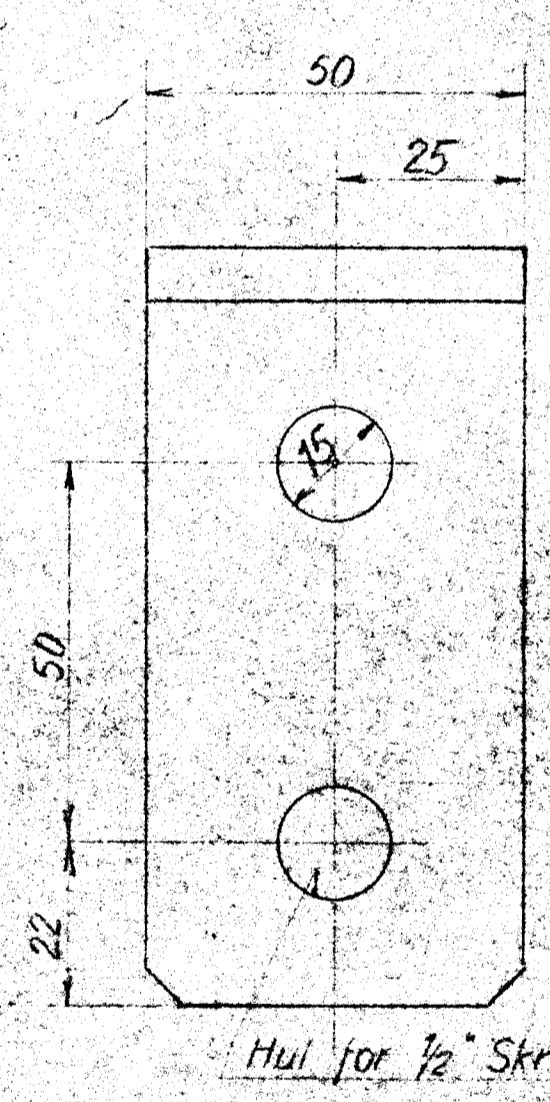
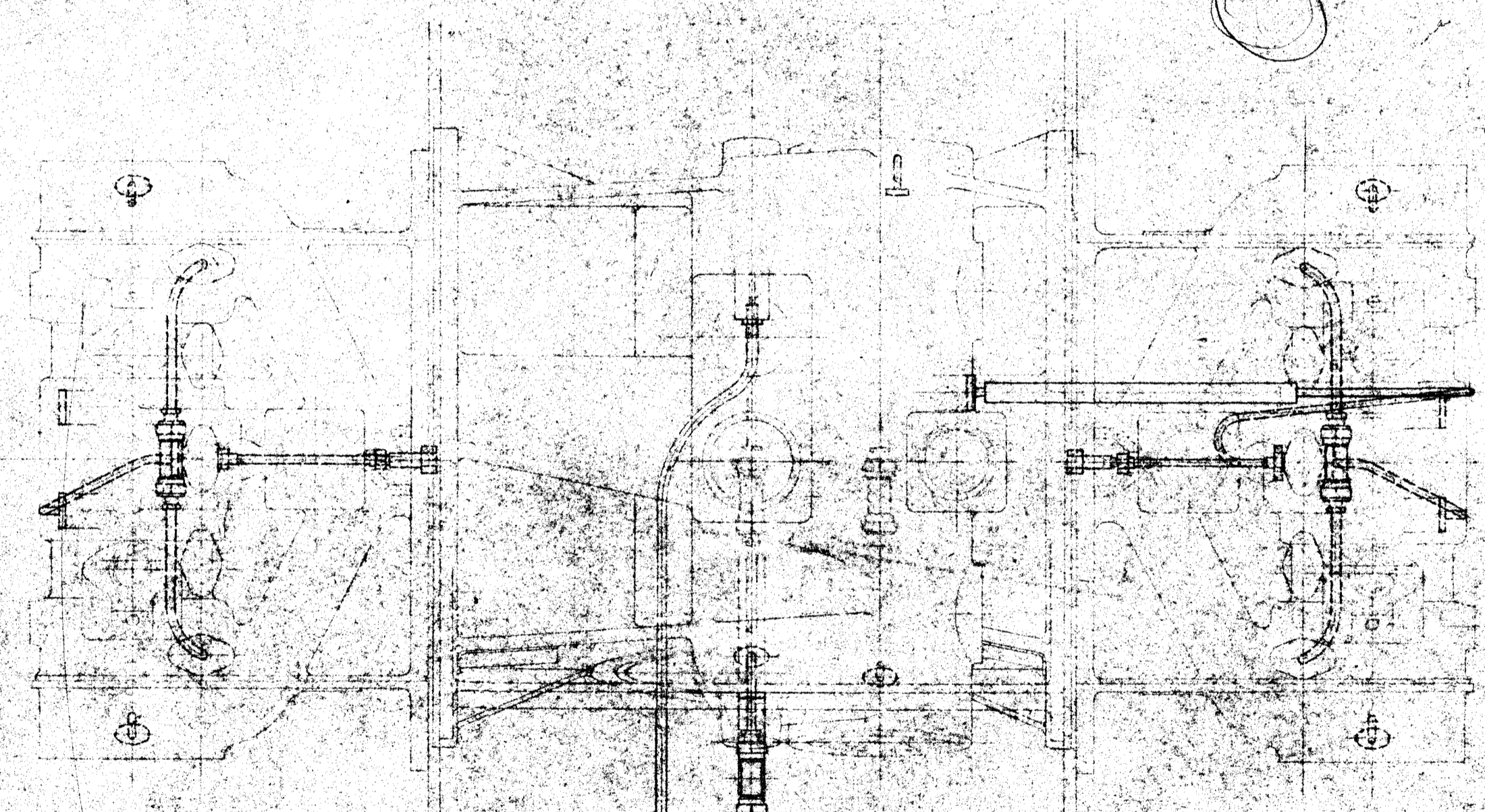
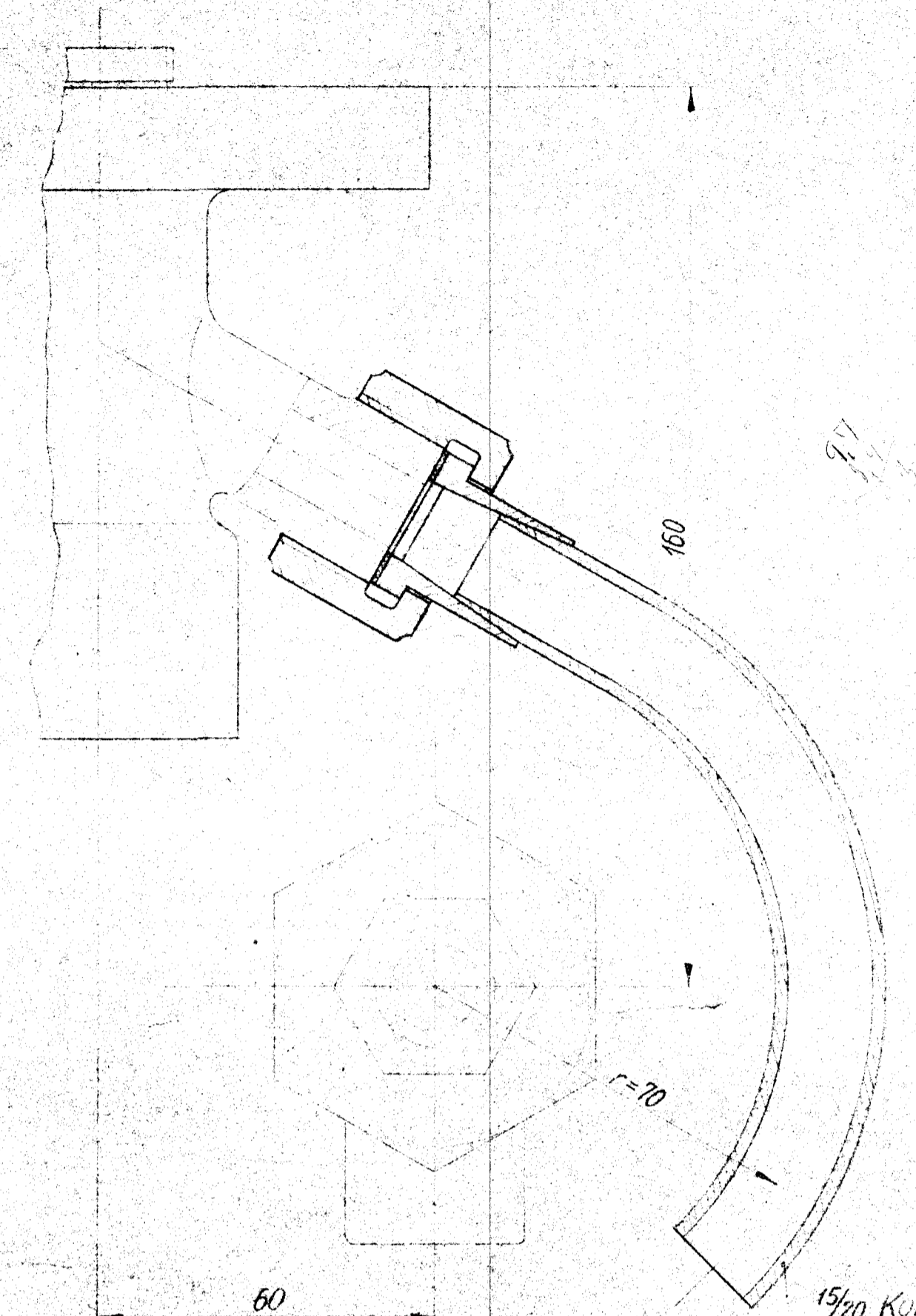
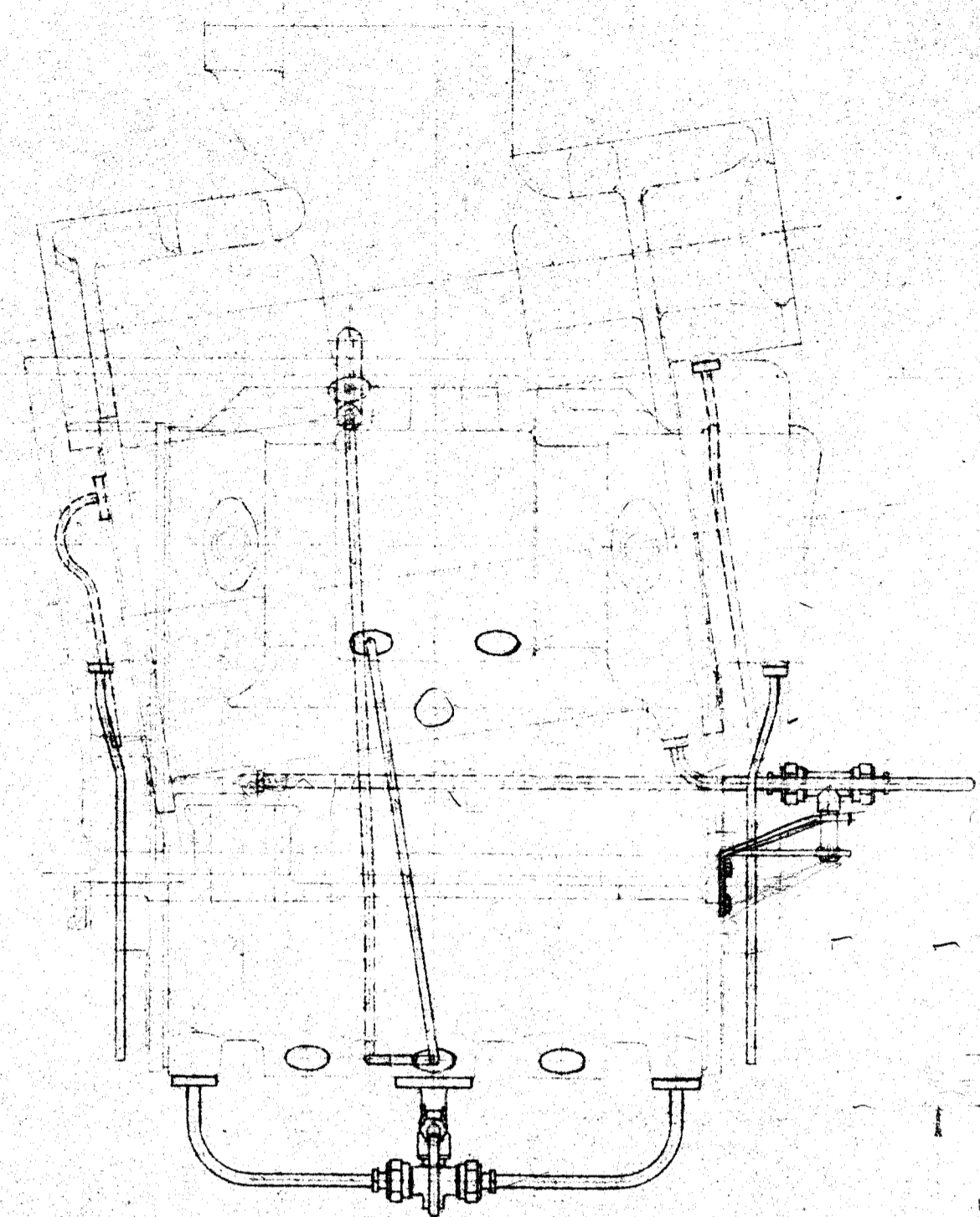
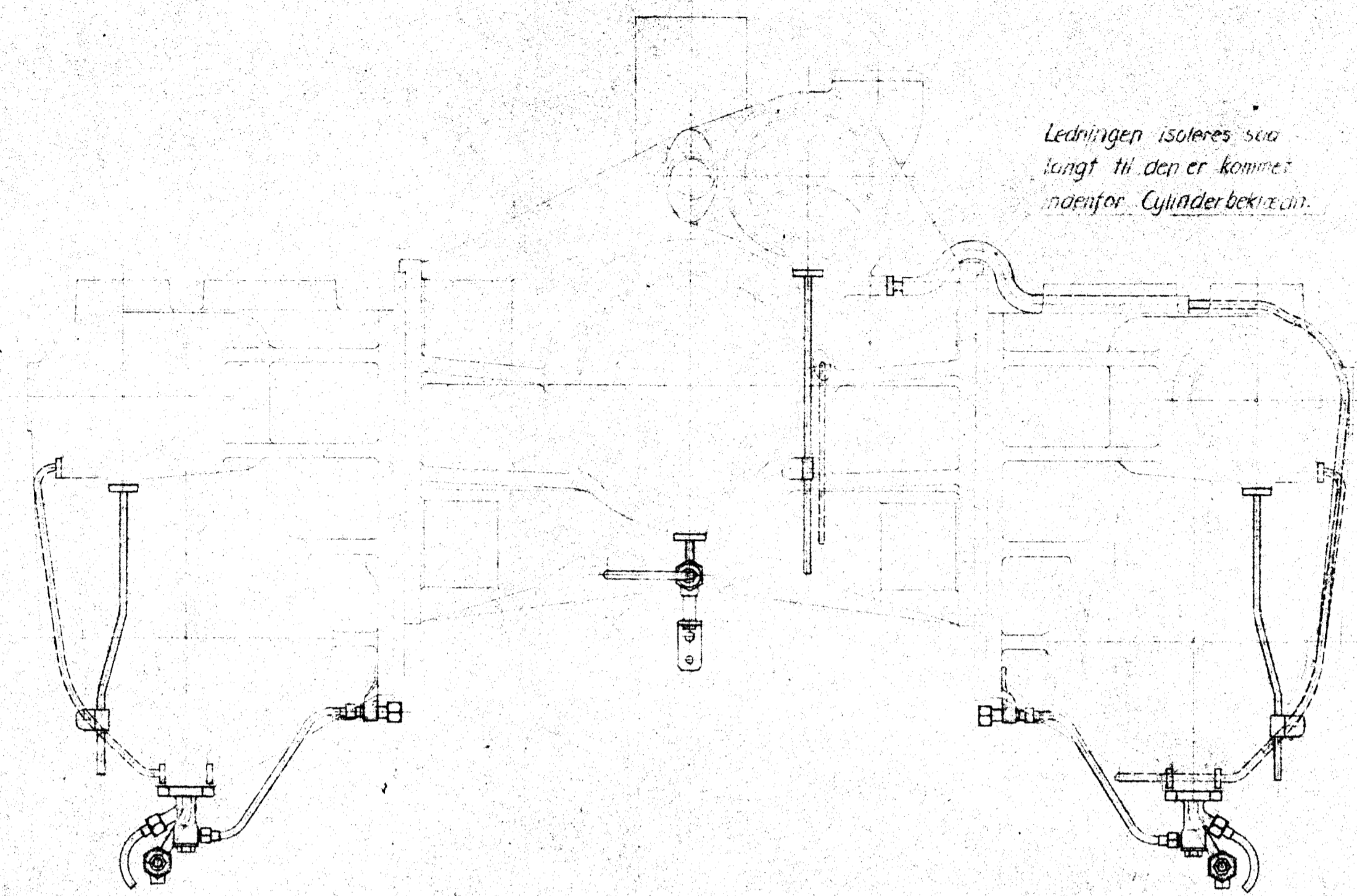
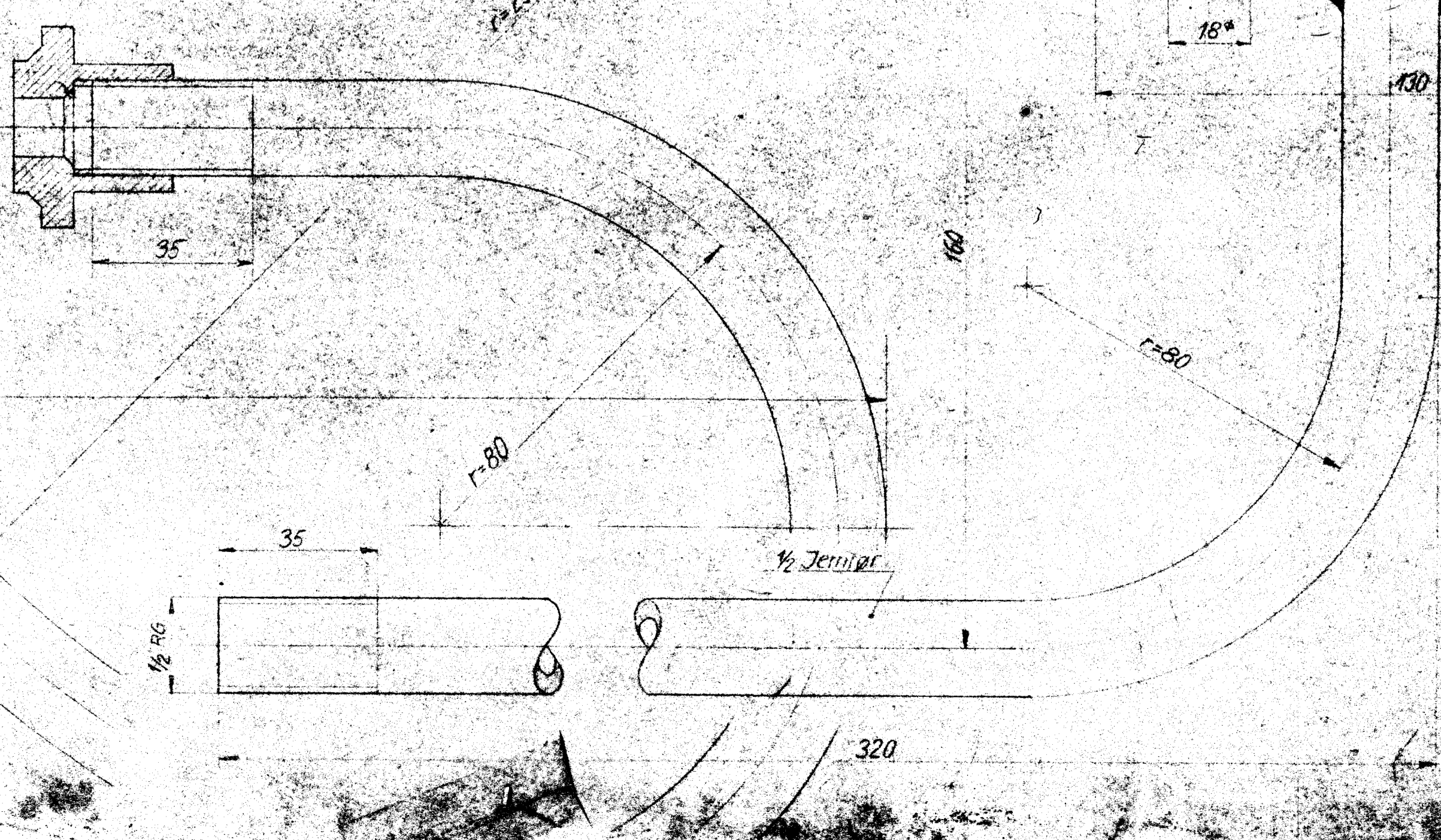
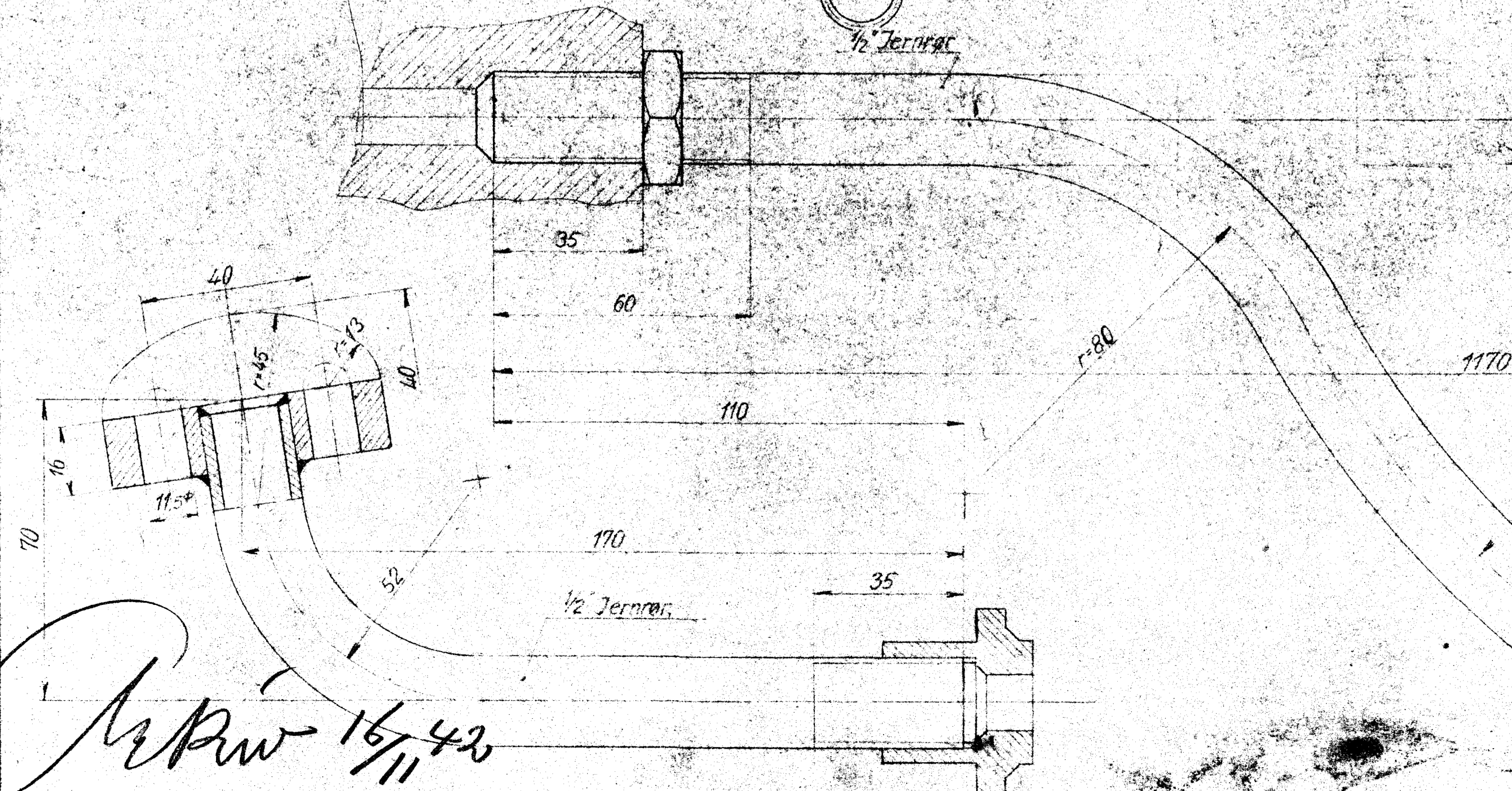


80
735
163-3
75
5,29

Ledningen isoleres saa
langt til den er kommet
indfor Cylinderbeholderen.



Ang. Bergs Vandudlader, se Tegn. Nr. NL 163a



Handwritten signature: N. P. W. 16/11 43

5-grebet Forbindelsesstykke Jernet	A. 4-6-41. 2st	Flangetykkelsen an- dret. M. 5749/44. C. 31/5. 44. P. 100
Anbringelse af materiel Vandudlader og Afst. m. indg. af vandet (M. 330-10-52)		
De danske Statsbaner. Maskinafdelingen.		Maaske 1-10 1-1 A.B.C.
Anbringelse af Bergs Vandudlader m. v. paa Boro. Nr. H.		ad H. 40