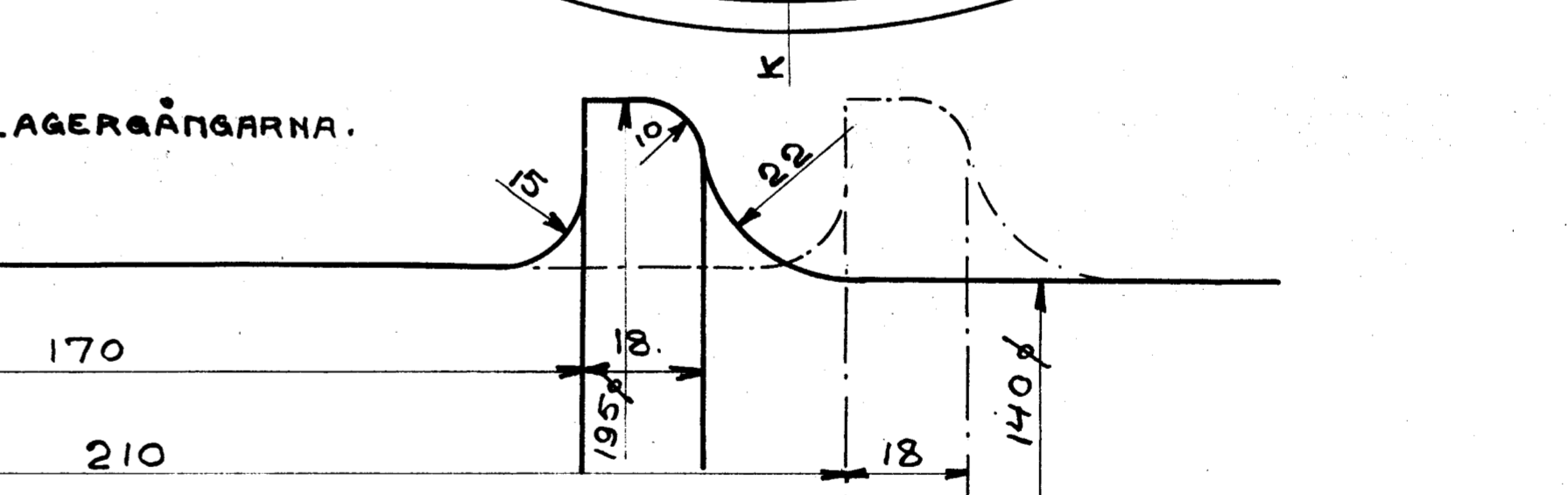
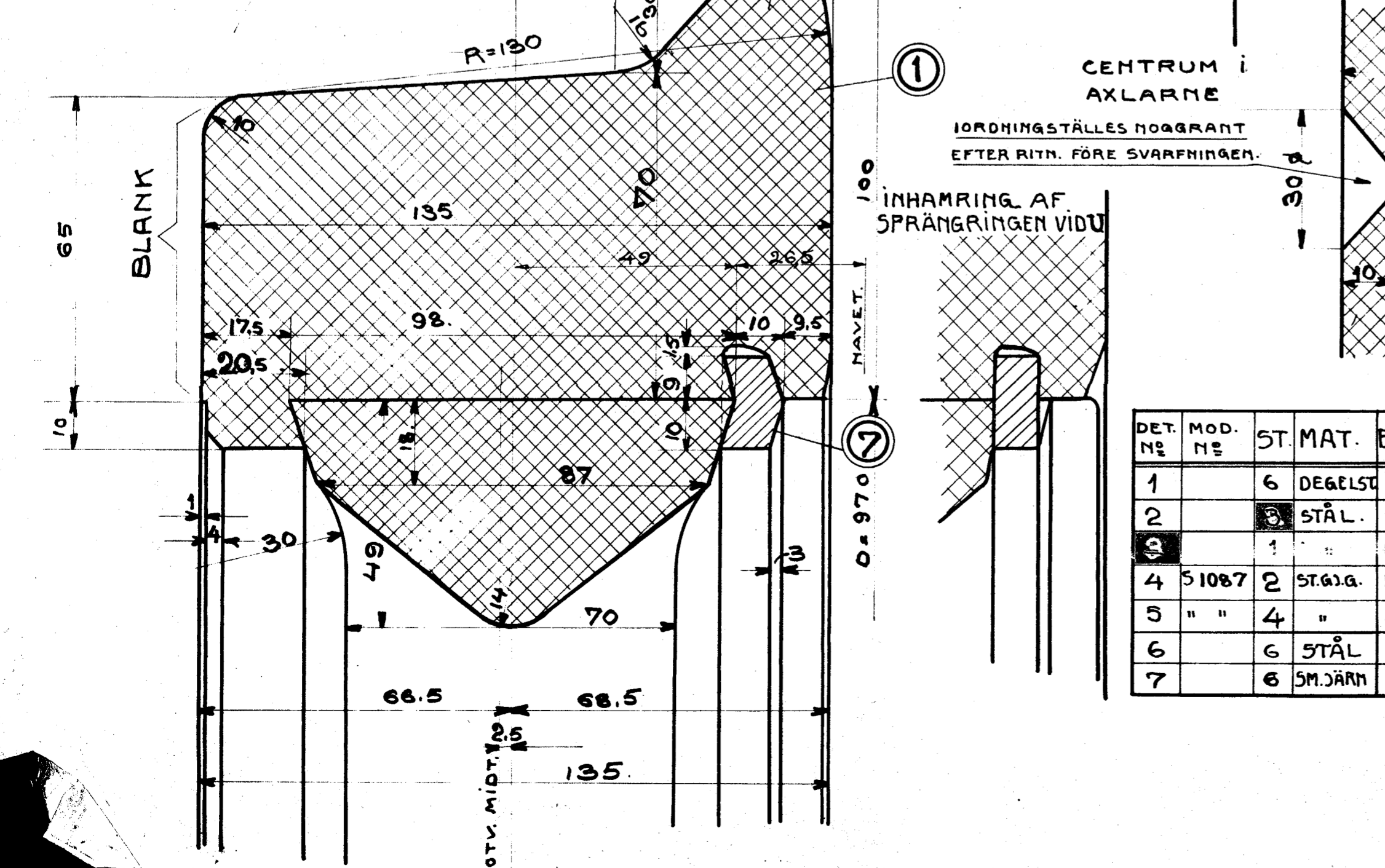
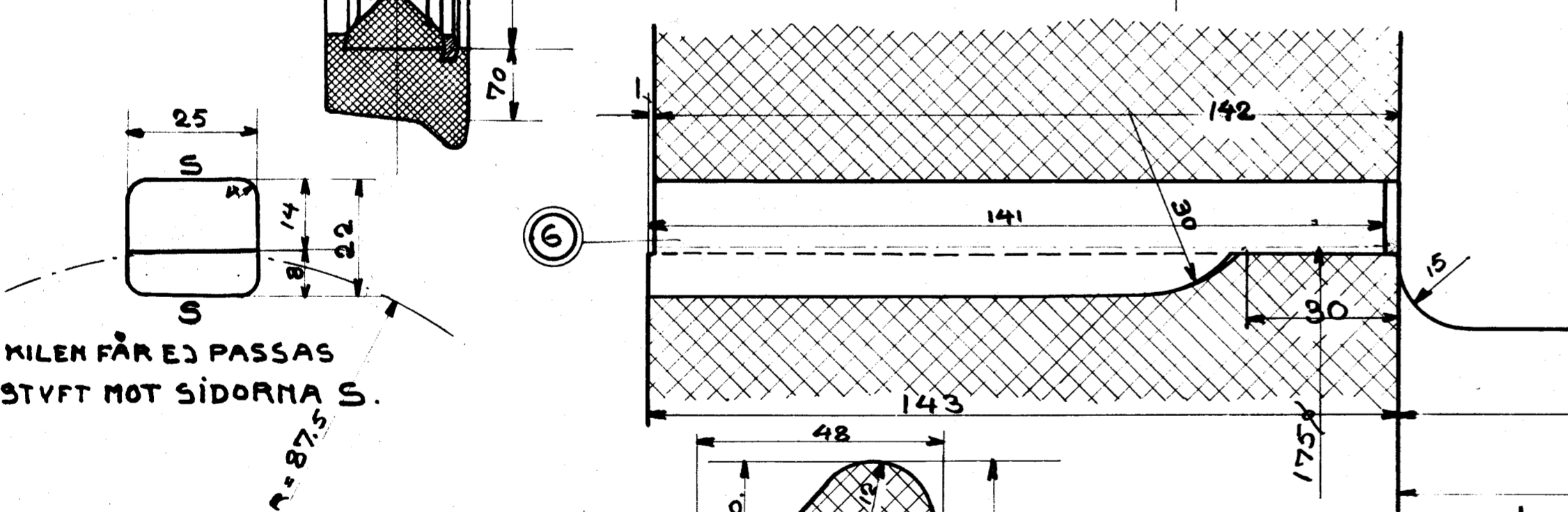
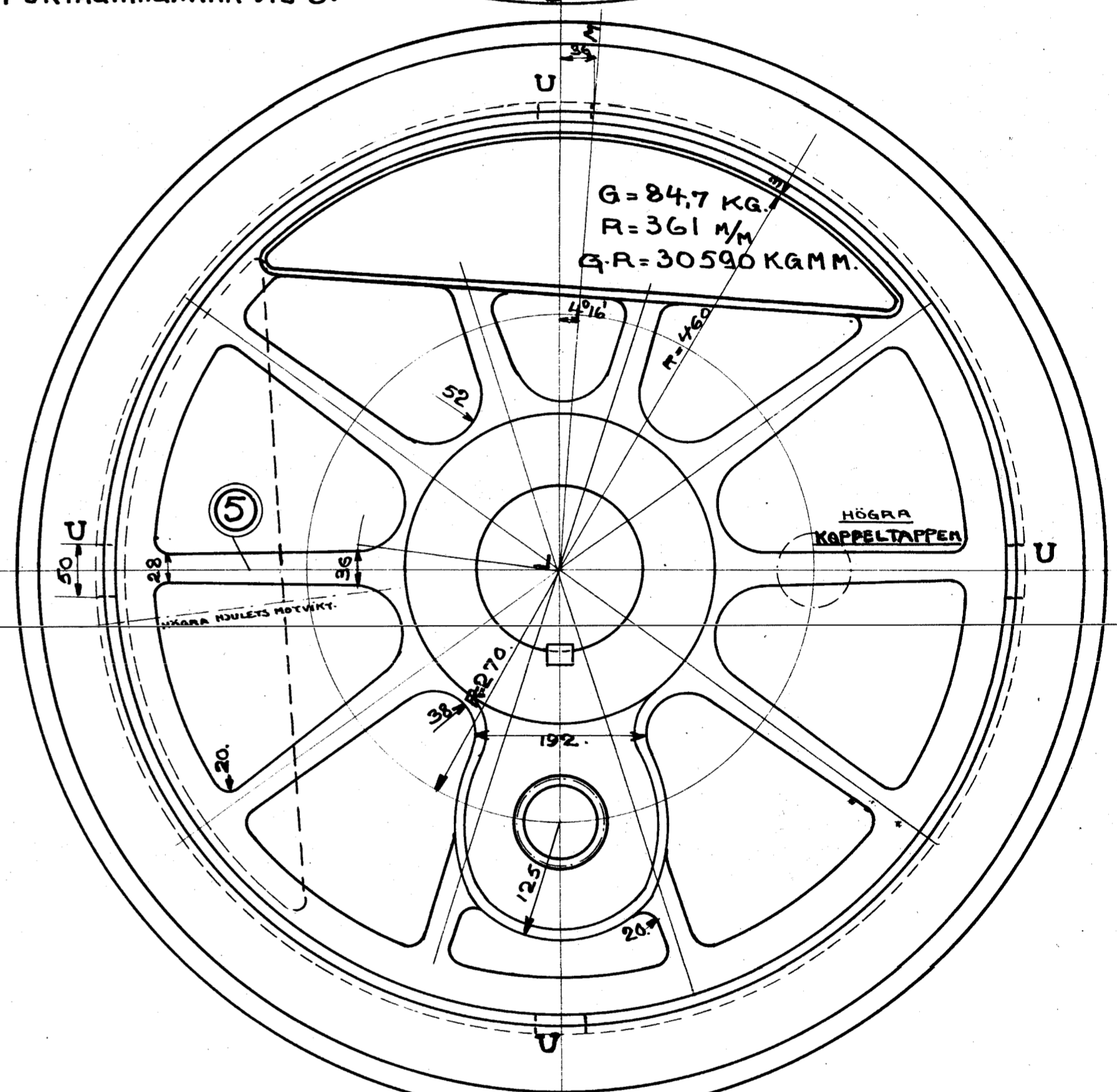
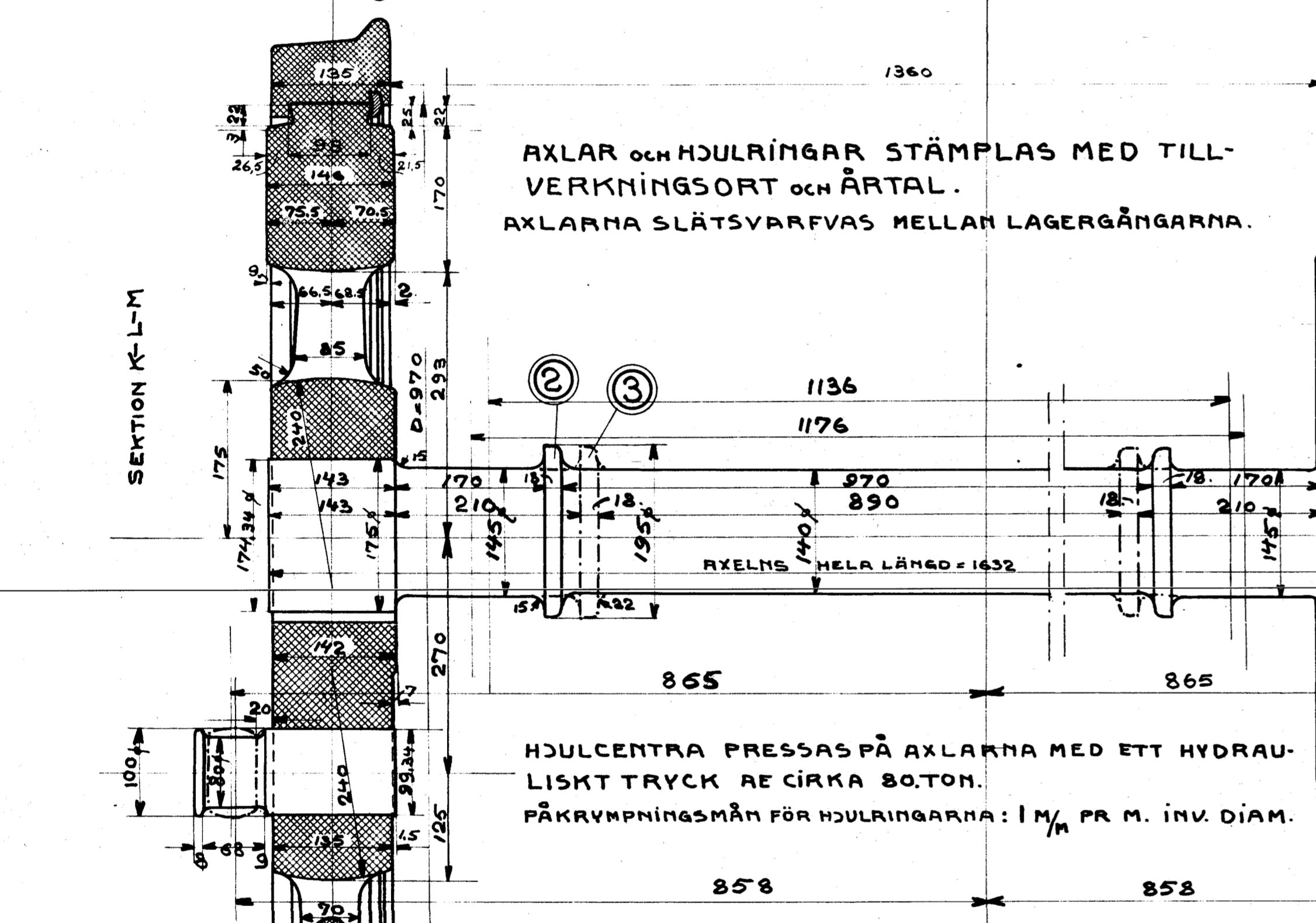
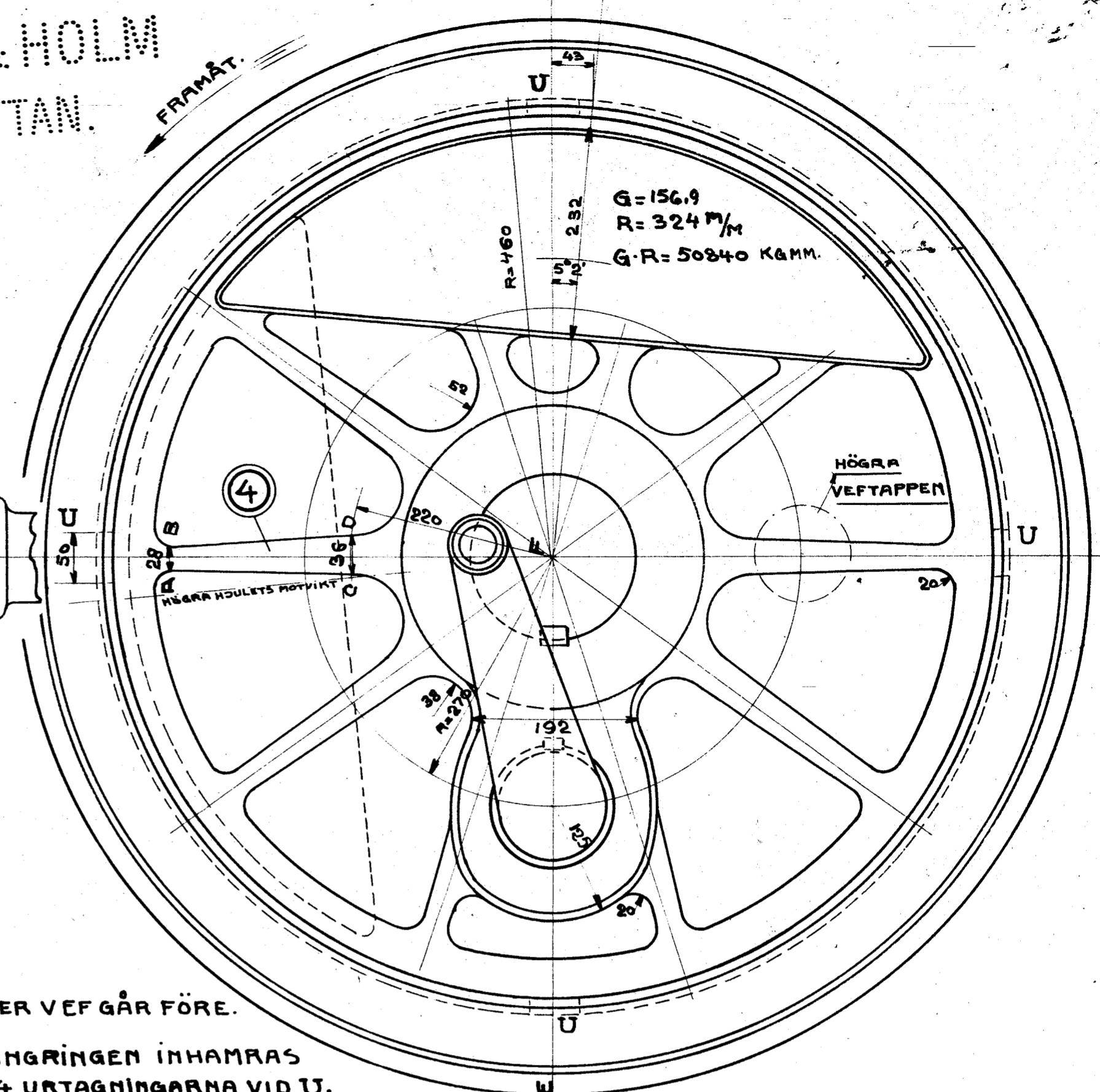
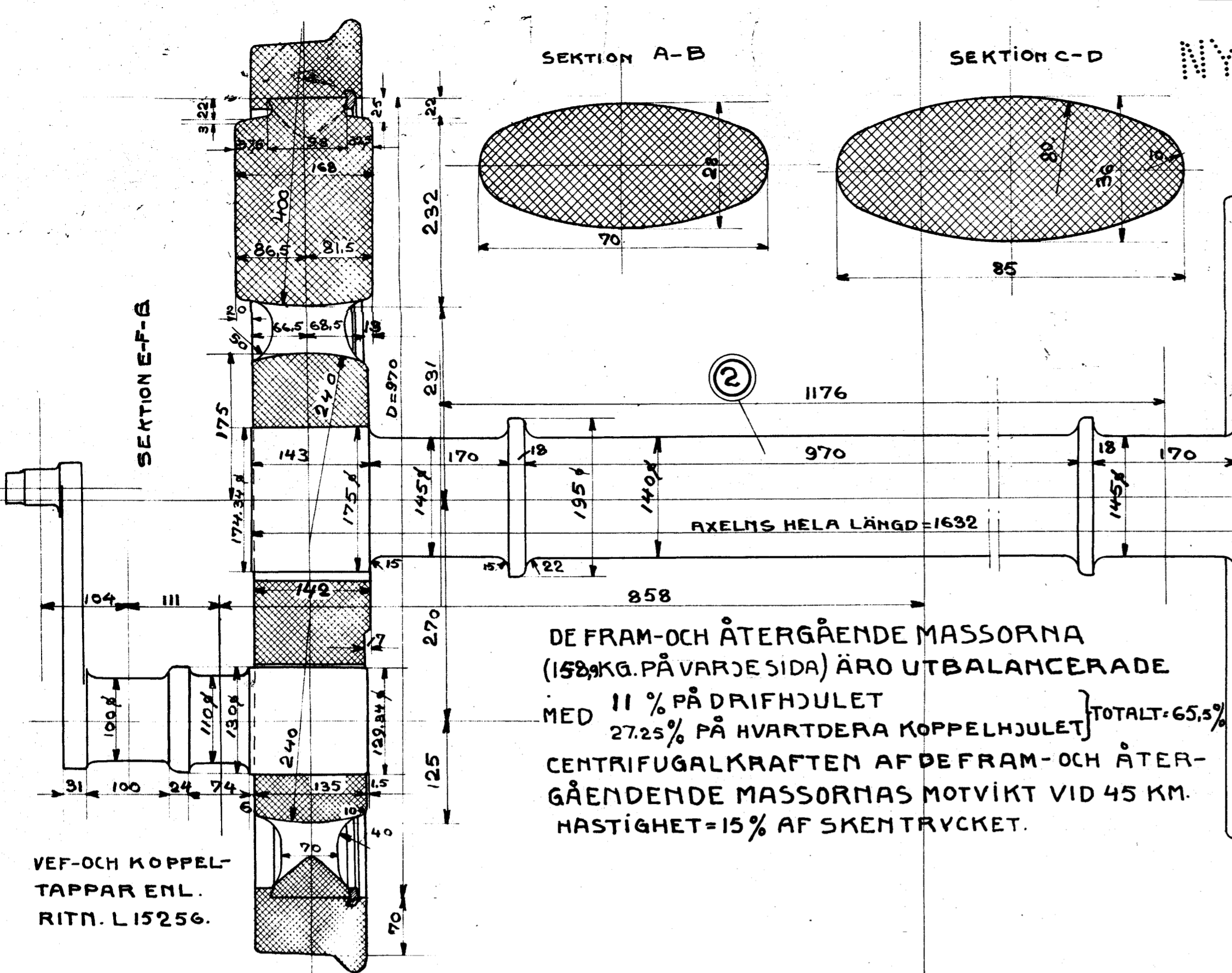


NYDOVIST & HOLM
TROLLHÄTTAN.



DET. N°	MOD. N°	ST	MAT.	BENÄMNING	ANM.
1	6		DEGLST	HJULRING.	BEST. RITN. L. 12454/1
2	3		STÅL	AXEL.	BEST. RITN. L. 15255/1
3	1		"	AXEL.	BEST. RITN. L. 15255/1 ENL. L. 15255/1
4	51087	2	STÅL	DRIFHJULSCENTRA.	MOD. ÄNDRAS
5	"	4	"	KOPPELHJULSCENTRA.	MOD. ÄNDRAS
6	6		STÅL	KIL	
7	6		SM. JÄRN	SPRÄNGRING	

BEST. N°	BESTÄLLARE	ST	ANM.	M.F. N°
1001-02	HARDBEK-GILLESSEN	1		
D33202				
1101-2	KJÖGGERINGSTED	1	N33 G8RES E.J.	

TILL LOKOMOTIV L. 15255

DRIF- OCH KOPPELHJUL

— SKALA=1:1, 1:5 —

DEM. 2/15.
H. Karsen